

SSB (Phospho Ser366) Rabbit pAb

CatalogNo: YP0945 **Orthogonal Validated** 

Key Features

Host Species

- Rabbit

Reactivity

- Human, Mouse, Rat

Applications

- WB, IHC, IF, ELISA

MW

- 47kD (Observed)

Isotype

- IgG

Storage

Storage* -15°C to -25°C/1 year (Do not lower than -25°C)**Formulation** Liquid in PBS containing 50% glycerol, 0.5% BSA and 0.02% sodium azide.

Recommended Dilution Ratios

WB 1:500-1:2000**IHC 1:100-1:300****IF 1:200-1:1000****ELISA 1:40000****Not yet tested in other applications.**

Basic Information

Clonality Polyclonal

Immunogen Information

Immunogen The antiserum was produced against synthesized peptide derived from human SSB around the phosphorylation site of Ser366. AA range: 341-390

Specificity

Phospho-SSB (S366) Polyclonal Antibody detects endogenous levels of SSB protein only when phosphorylated at S366. The name of modified sites may be influenced by many factors, such as species (the modified site was not originally found in human samples) and the change of protein sequence (the previous protein sequence is incomplete, and the protein sequence may be prolonged with the development of protein sequencing technology). When naming, we will use the "numbers" in historical reference to keep the sites consistent with the reports. The antibody binds to the following modification sequence (lowercase letters are modification sites):FASDD

Target Information

Gene name SSB

Protein Name Lupus La protein

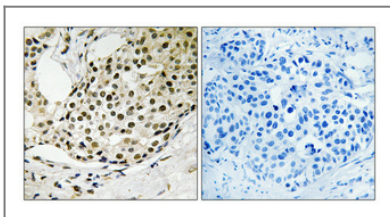
Organism	Gene ID	UniProt ID
Human	6741 ;	P05455 ;
Mouse		P32067 ;

Cellular Localization Nucleus .

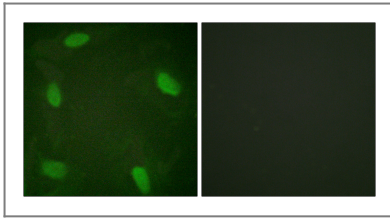
Tissue specificity Epithelium,Liver,Placenta,Skeletal muscle,

Function Disease:Sera from patients with systemic lupus erythematosus (SLE) often contain antibodies that react with the normal cellular La protein as if this antigen was foreign.,Function:La protein plays a role in the transcription of RNA polymerase III. It is most probably a transcription termination factor. Binds to the 3' termini of virtually all nascent polymerase III transcripts. It is associated with precursor forms of RNA polymerase III transcripts including tRNA and 4.5S, 5S, 7S, and 7-2 RNAs.,PTM:Phosphorylated. The phosphorylation sites are at the C-terminal part of the protein.,PTM:The N-terminus is blocked.,similarity:Contains 1 HTH La-type RNA-binding domain.,similarity:Contains 1 RRM (RNA recognition motif) domain.,subunit:Interacts with DDX15. May interact with RUFY1.,

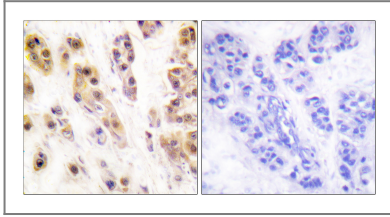
Validation Data



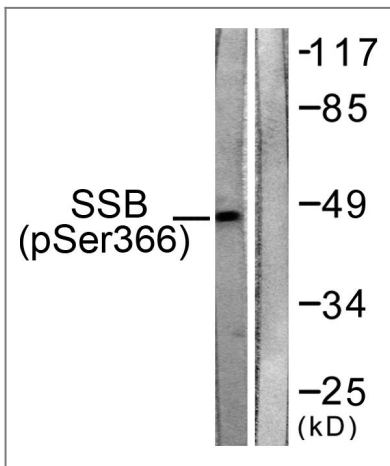
Immunohistochemical analysis of paraffin-embedded Human breast cancer. Antibody was diluted at 1:100(4° overnight). High-pressure and temperature Tris-EDTA,pH8.0 was used for antigen retrieval. Negative contrl (right) obtained from antibody was pre-absorbed by immunogen peptide.



Immunofluorescence analysis of HeLa cells treated with Forskolin 40nM 30', using SSB (Phospho-Ser366) Antibody. The picture on the right is blocked with the phospho peptide.



Immunohistochemistry analysis of paraffin-embedded human breast carcinoma, using SSB (Phospho-Ser366) Antibody. The picture on the right is blocked with the phospho peptide.



Western blot analysis of lysates from 293 cells, using SSB (Phospho-Ser366) Antibody. The lane on the right is blocked with the phospho peptide.

Contact information

Orders: order@immunoway.com
Support: tech@immunoway.com
Telephone: 877-594-3616 (Toll Free), 408-747-0185
Website: <http://www.immunoway.com>
Address: 2200 Ringwood Ave San Jose, CA 95131 USA



Please scan the QR code to access additional product information:
SSB (Phospho Ser366) Rabbit pAb

For Research Use Only. Not for Use in Diagnostic Procedures.

[Antibody](#) | [ELISA Kits](#) | [Protein](#) | [Reagents](#)