

p47-phox (Phospho Ser359) Rabbit pAb

CatalogNo: YP0944 Orthogonal Validated 

Key Features

Host Species

- Rabbit

Reactivity

- Human, Mouse, Rat

Applications

- WB, IHC, IF, ELISA

MW

- 45kD (Observed)

Isotype

- IgG

Storage

Storage* -15°C to -25°C/1 year (Do not lower than -25°C)

Formulation Liquid in PBS containing 50% glycerol, 0.5% BSA and 0.02% sodium azide.

Recommended Dilution Ratios

WB 1:500-1:2000

IHC 1:100-1:300

IF 1:200-1:1000

ELISA 1:5000

Not yet tested in other applications.

Basic Information

Clonality Polyclonal

Immunogen Information

Immunogen The antiserum was produced against synthesized peptide derived from human p47 phox around the phosphorylation site of Ser359. AA range: 331-380

Specificity

Phospho-p47-phox (S359) Polyclonal Antibody detects endogenous levels of p47-phox protein only when phosphorylated at S359. The name of modified sites may be influenced by many factors, such as species (the modified site was not originally found in human samples) and the change of protein sequence (the previous protein sequence is incomplete, and the protein sequence may be prolonged with the development of protein sequencing technology). When naming, we will use the "numbers" in historical reference to keep the sites consistent with the reports. The antibody binds to the following modification sequence (lowercase letters are modification sites): QRsKP

| Target Information

Gene name NCF1

Protein Name Neutrophil cytosol factor 1

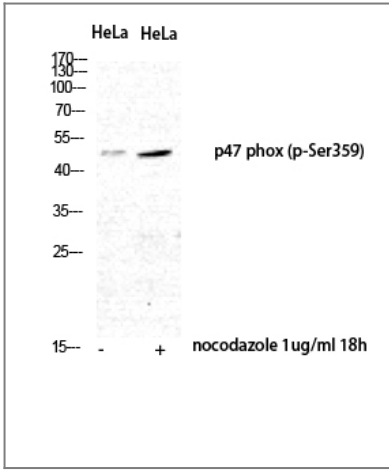
Organism	Gene ID	UniProt ID
Human	653361 ;	P14598 ;
Mouse		Q09014 ;

Cellular Localization Cytoplasm, cytosol . Membrane ; Peripheral membrane protein ; Cytoplasmic side .

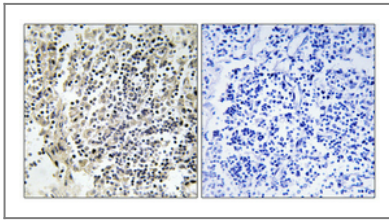
Tissue specificity Detected in peripheral blood monocytes and neutrophils (at protein level).

Function Disease: Defects in NCF1 are the cause of chronic granulomatous disease autosomal recessive cytochrome-b-positive type 1 (CGD1) [MIM:233700]. Chronic granulomatous disease is a genetically heterogeneous disorder characterized by the inability of neutrophils and phagocytes to kill microbes that they have ingested. Patients suffer from life-threatening bacterial/fungal infections. Function: NCF2, NCF1, and a membrane bound cytochrome b558 are required for activation of the latent NADPH oxidase (necessary for superoxide production). online information: NCF1 deficiency database, similarity: Contains 1 PX (phox homology) domain. similarity: Contains 2 SH3 domains. subunit: Interacts with NOXA1.

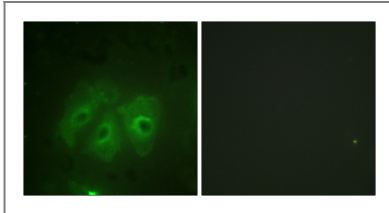
| Validation Data



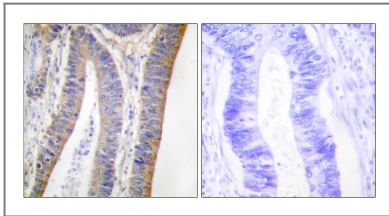
Western Blot analysis of HeLa nocodazole 1ug/ml 18h cells using Phospho-p47-phox (S359) Polyclonal Antibody diluted at 1:500



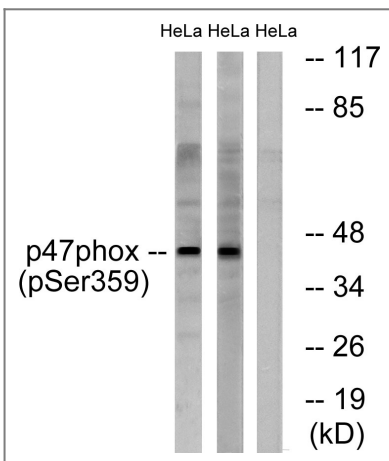
Immunohistochemical analysis of paraffin-embedded Human lung cancer. Antibody was diluted at 1:100(4° overnight). High-pressure and temperature Tris-EDTA,pH8.0 was used for antigen retrieval. Negative contrl (right) obtaned from antibody was pre-absorbed by immunogen peptide.



Immunofluorescence analysis of HeLa cells, using p47 phox (Phospho-Ser359) Antibody. The picture on the right is blocked with the phospho peptide.



Immunohistochemistry analysis of paraffin-embedded human colon carcinoma, using p47 phox (Phospho-Ser359) Antibody. The picture on the right is blocked with the phospho peptide.



Western blot analysis of lysates from HeLa cells treated with nocodazole 1ug/ml 18h, using p47 phox (Phospho-Ser359) Antibody. The lane on the right is blocked with the phospho peptide.

Contact information

Orders: order@immunoway.com
Support: tech@immunoway.com
Telephone: 877-594-3616 (Toll Free), 408-747-0185
Website: http://www.immunoway.com
Address: 2200 Ringwood Ave San Jose, CA 95131 USA



Please scan the QR code
to access additional
product information:
**p47-phox (Phospho
Ser359) Rabbit pAb**

For Research Use Only. Not for Use in Diagnostic Procedures.

[Antibody](#) | [ELISA Kits](#) | [Protein](#) | [Reagents](#)