

Moesin/Ezrin/Radixin (Phospho Thr558) Rabbit pAb

CatalogNo: YP0940

Key Features

Host Species

- Rabbit

Reactivity

- Human, Mouse, Rat

Applications

- WB, IHC, IF, ELISA

MW

- 67kD (Observed)

Isotype

- IgG

Storage

Storage* -15°C to -25°C/1 year (Do not lower than -25°C)

Formulation Liquid in PBS containing 50% glycerol, 0.5% BSA and 0.02% sodium azide.

Recommended Dilution Ratios

WB 1:500-1:2000

IHC 1:100-1:300

IF 1:200-1:1000

ELISA 1:5000

Not yet tested in other applications.

Basic Information

Clonality Polyclonal

Immunogen Information

Immunogen The antiserum was produced against synthesized peptide derived from human Moesin/Ezrin/Radixin around the phosphorylation site of Thr558. AA range:524-573

Specificity

Phospho-Moesin/Ezrin/Radixin (T558) Polyclonal Antibody detects endogenous levels of Moesin/Ezrin/Radixin protein only when phosphorylated at T558. The name of modified sites may be influenced by many factors, such as species (the modified site was not originally found in human samples) and the change of protein sequence (the previous protein sequence is incomplete, and the protein sequence may be prolonged with the development of protein sequencing technology). When naming, we will use the "numbers" in historical reference to keep the sites consistent with the reports. The antibody binds to the following modification sequence (lowercase letters are modification sites):YKtLR

Target Information

Gene name MSN

Protein Name Moesin

Organism	Gene ID	UniProt ID
Human	4478 ; 5962 ;	P26038 ; P35241 ; P15311 ;
Mouse	17698 ; 19684 ; 22350 ;	
Rat	81521 ; 54319 ;	O35763 ; P31977 ;

Cellular Localization

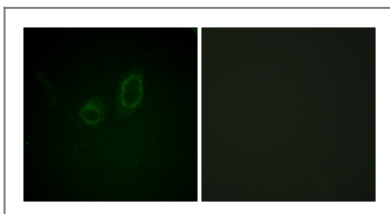
Cell membrane ; Peripheral membrane protein ; Cytoplasmic side . Cytoplasm, cytoskeleton . Apical cell membrane ; Peripheral membrane protein ; Cytoplasmic side . Cell projection, microvillus membrane ; Peripheral membrane protein ; Cytoplasmic side . Cell projection, microvillus . Phosphorylated form is enriched in microvilli-like structures at apical membrane. Increased cell membrane localization of both phosphorylated and non-phosphorylated forms seen after thrombin treatment (By similarity). Localizes at the uropods of T lymphoblasts. .

Tissue specificity In all tissues and cultured cells studied.

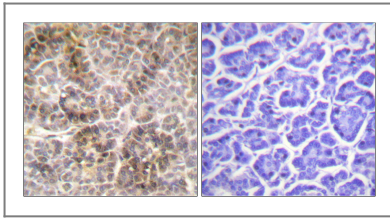
Function

Function:Probably involved in connections of major cytoskeletal structures to the plasma membrane.,PTM:Phosphorylation on Thr-558 is crucial for the formation of microvilli-like structures.,similarity:Contains 1 FERM domain.,subcellular location:Phosphorylated form is enriched in microvilli-like structures at apical membrane.,subunit:In resting T-cells, part of a PAG1-SLC9A3R1-MSN complex which is disrupted upon TCR activation (By similarity). Binds SLC9A3R1.,tissue specificity:In all tissues and cultured cells studied.,

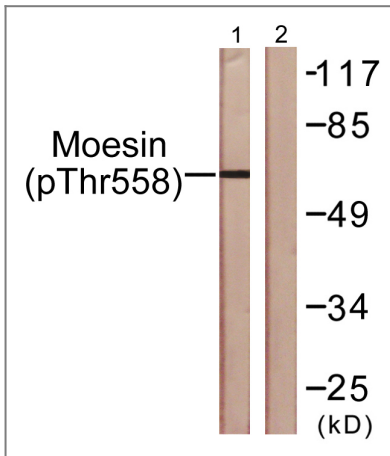
Validation Data



Immunofluorescence analysis of A549 cells, using Moesin/Ezrin/Radixin (Phospho-Thr558) Antibody. The picture on the right is blocked with the phospho peptide.



Immunohistochemistry analysis of paraffin-embedded human pancreas, using Moesin/Ezrin/Radixin (Phospho-Thr558) Antibody. The picture on the right is blocked with the phospho peptide.



Western blot analysis of lysates from NIH/3T3 cells, using Moesin/Ezrin/Radixin (Phospho-Thr558) Antibody. The lane on the right is blocked with the phospho peptide.

Contact information

Orders: order@immunoway.com
Support: tech@immunoway.com
Telephone: 877-594-3616 (Toll Free), 408-747-0185
Website: <http://www.immunoway.com>
Address: 2200 Ringwood Ave San Jose, CA 95131 USA



Please scan the QR code to access additional product information:

**Moesin/Ezrin/Radixin
(Phospho Thr558)
Rabbit pAb**

For Research Use Only. Not for Use in Diagnostic Procedures.

[Antibody](#) | [ELISA Kits](#) | [Protein](#) | [Reagents](#)