

IL-9R (Phospho Ser519) Rabbit pAb

CatalogNo: YP0937

Key Features

Host Species

- Rabbit

Reactivity

- Human, Mouse, Rat

Applications

- WB, IHC, IF, ELISA

MW

- 57kD (Observed)

Isotype

- IgG

Storage

Storage* -15°C to -25°C/1 year (Do not lower than -25°C)

Formulation Liquid in PBS containing 50% glycerol, 0.5% BSA and 0.02% sodium azide.

Recommended Dilution Ratios

WB 1:500-1:2000

IHC 1:100-1:300

IF 1:200-1:1000

ELISA 1:20000

Not yet tested in other applications.

Basic Information

Clonality Polyclonal

Immunogen Information

Immunogen The antiserum was produced against synthesized peptide derived from human IL-9R around the phosphorylation site of Ser519. AA range: 472-521

Specificity

Phospho-IL-9R (S519) Polyclonal Antibody detects endogenous levels of IL-9R protein only when phosphorylated at S519. The name of modified sites may be influenced by many factors, such as species (the modified site was not originally found in human samples) and the change of protein sequence (the previous protein sequence is incomplete, and the protein sequence may be prolonged with the development of protein sequencing technology). When naming, we will use the "numbers" in historical reference to keep the sites consistent with the reports. The antibody binds to the following modification sequence (lowercase letters are modification sites): ARSWT

Target Information

Gene name IL9R

Protein Name Interleukin-9 receptor

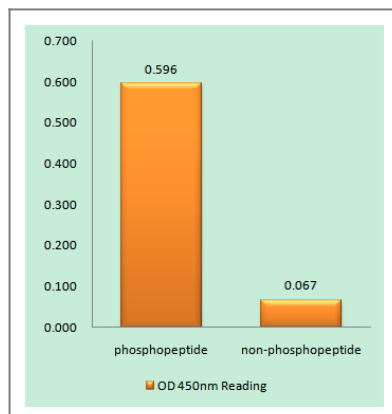
Organism	Gene ID	UniProt ID
Human	3581 ;	Q01113 ;
Mouse		Q01114 ;

Cellular Localization Cell membrane; Single-pass type I membrane protein. Secreted.

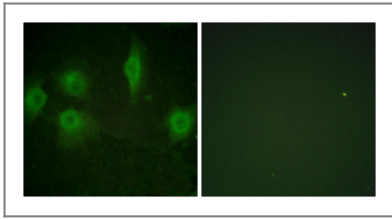
Tissue specificity Melanoma,

Function Domain: The box 1 motif is required for JAK interaction and/or activation., Domain: The WSXWS motif appears to be necessary for proper protein folding and thereby efficient intracellular transport and cell-surface receptor binding., Function: This is a receptor for interleukin-9., miscellaneous: The gene encoding for this protein is located in the pseudoautosomal region 2 (PAR2) of X and Y chromosomes., similarity: Belongs to the type I cytokine receptor family. Type 4 subfamily., similarity: Contains 1 fibronectin type-III domain.,

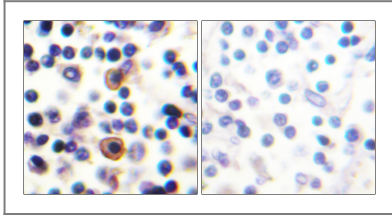
Validation Data



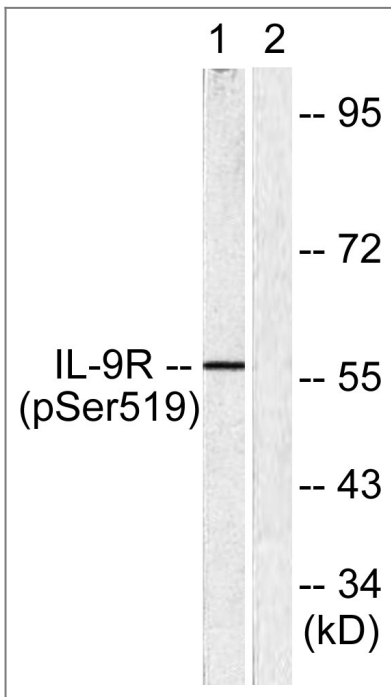
Enzyme-Linked Immunosorbent Assay (Phospho-ELISA) for Immunogen Phosphopeptide (Phospho-left) and Non-Phosphopeptide (Phospho-right), using IL-9R (Phospho-Ser519) Antibody



Immunofluorescence analysis of HUVEC cells, using IL-9R (Phospho-Ser519) Antibody. The picture on the right is blocked with the phospho peptide.



Immunohistochemistry analysis of paraffin-embedded human lymph node, using IL-9R (Phospho-Ser519) Antibody. The picture on the right is blocked with the phospho peptide.



Western blot analysis of lysates from HUVEC cells, using IL-9R (Phospho-Ser519) Antibody. The lane on the right is blocked with the phospho peptide.

Contact information

Orders: order@immunoway.com
Support: tech@immunoway.com
Telephone: 877-594-3616 (Toll Free), 408-747-0185
Website: <http://www.immunoway.com>
Address: 2200 Ringwood Ave San Jose, CA 95131 USA



Please scan the QR code to access additional product information:
IL-9R (Phospho Ser519) Rabbit pAb