

IL-8R β (Phospho Ser347) Rabbit pAb

CatalogNo: YP0936 Orthogonal Validated 

Key Features

Host Species

- Rabbit

Reactivity

- Human

Applications

- WB,IHC,IF,ELISA

MW

- 48kD (Observed)

Isotype

- IgG

Storage

Storage* -15°C to -25°C/1 year(Do not lower than -25°C)

Formulation Liquid in PBS containing 50% glycerol, 0.5% BSA and 0.02% sodium azide.

Recommended Dilution Ratios

WB 1:500-1:2000

IHC 1:100-1:300

IF 1:200-1:1000

ELISA 1:10000

Not yet tested in other applications.

Basic Information

Clonality Polyclonal

Immunogen Information

Immunogen The antiserum was produced against synthesized peptide derived from human IL-8R beta/CDw128 beta around the phosphorylation site of Ser347. AA range:311-360

Specificity

Phospho-IL-8R β (S347) Polyclonal Antibody detects endogenous levels of IL-8R β protein only when phosphorylated at S347. The name of modified sites may be influenced by many factors, such as species (the modified site was not originally found in human samples) and the change of protein sequence (the previous protein sequence is incomplete, and the protein sequence may be prolonged with the development of protein sequencing technology). When naming, we will use the "numbers" in historical reference to keep the sites consistent with the reports. The antibody binds to the following modification sequence (lowercase letters are modification sites):RPsFV

Target Information

Gene name CXCR2

Protein Name C-X-C chemokine receptor type 2

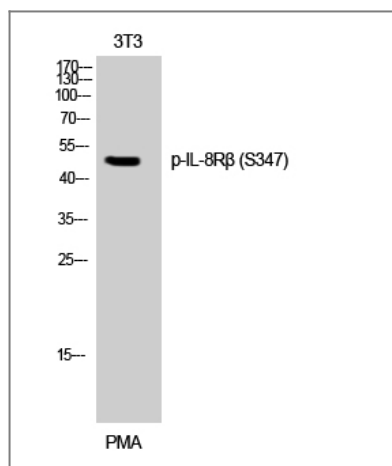
Organism	Gene ID	UniProt ID
Human	3579;	P25025;
Mouse	12765;	P35343;

Cellular Localization Cell membrane; Multi-pass membrane protein.

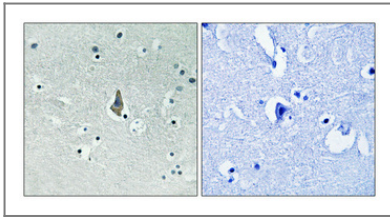
Tissue specificity Brain,Placenta,

Function Function:Receptor for interleukin-8 which is a powerful neutrophil chemotactic factor. Binding of IL-8 to the receptor causes activation of neutrophils. This response is mediated via a G-protein that activates a phosphatidylinositol-calcium second messenger system. Binds to IL-8 with high affinity. Also binds with high affinity to CXCL3, GRO/MGSA and NAP-2.,online information:CXC chemokine receptors entry,PTM:Phosphorylated upon ligand binding; which is required for desensitization.,similarity:Belongs to the G-protein coupled receptor 1 family.,

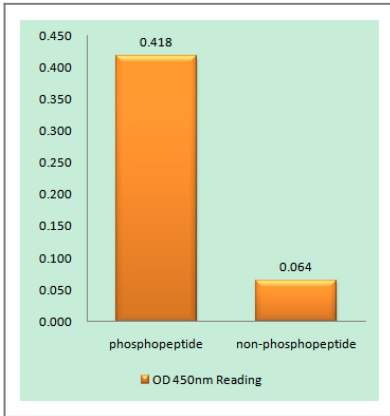
Validation Data



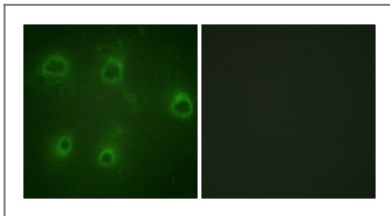
Western Blot analysis of 3T3 cells using Phospho-IL-8R β (S347) Polyclonal Antibody



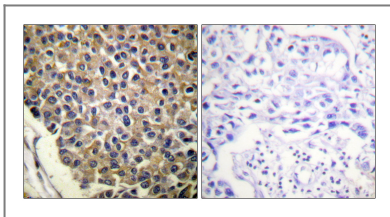
Immunohistochemical analysis of paraffin-embedded Human brain. Antibody was diluted at 1:100(4° overnight). High-pressure and temperature Tris-EDTA,pH8.0 was used for antigen retrieval. Negative contrl (right) obtained from antibody was pre-absorbed by immunogen peptide.



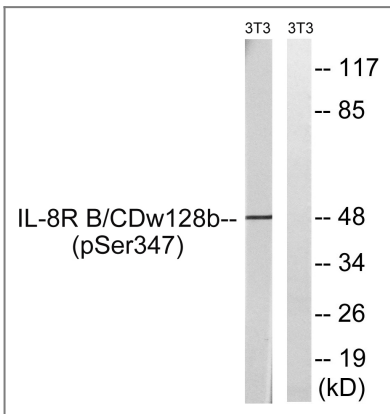
Enzyme-Linked Immunosorbent Assay (Phospho-ELISA) for Immunogen Phosphopeptide (Phospho-left) and Non-Phosphopeptide (Phospho-right), using IL-8R beta/CDw128 beta (Phospho-Ser347) Antibody



Immunofluorescence analysis of COS7 cells, using IL-8R beta/CDw128 beta (Phospho-Ser347) Antibody. The picture on the right is blocked with the phospho peptide.



Immunohistochemistry analysis of paraffin-embedded human breast carcinoma, using IL-8R beta/CDw128 beta (Phospho-Ser347) Antibody. The picture on the right is blocked with the phospho peptide.



Western blot analysis of lysates from NIH/3T3 cells treated with PMA 125ng/ml 30', using IL-8R beta/CDw128 beta (Phospho-Ser347) Antibody. The lane on the right is blocked with the phospho peptide.

Contact information

Orders: order@immunoway.com
Support: tech@immunoway.com
Telephone: 877-594-3616 (Toll Free), 408-747-0185
Website: http://www.immunoway.com
Address: 2200 Ringwood Ave San Jose, CA 95131 USA



Please scan the QR code
to access additional
product information:
**IL-8R β (Phospho
Ser347) Rabbit pAb**

For Research Use Only. Not for Use in Diagnostic Procedures.

[Antibody](#) | [ELISA Kits](#) | [Protein](#) | [Reagents](#)