

CDC16/APC6 (Phospho Ser560) Rabbit pAb

CatalogNo: YP0931

Key Features

Host Species

- Rabbit

Reactivity

- Human, Mouse

Applications

- WB, IHC, IF, ELISA

MW

- 72kD (Observed)

Isotype

- IgG

Storage

Storage* -15°C to -25°C/1 year (Do not lower than -25°C)

Formulation Liquid in PBS containing 50% glycerol, 0.5% BSA and 0.02% sodium azide.

Recommended Dilution Ratios

WB 1:500-1:2000

IHC 1:100-1:300

IF 1:200-1:1000

ELISA 1:20000

Not yet tested in other applications.

Basic Information

Clonality Polyclonal

Immunogen Information

Immunogen The antiserum was produced against synthesized peptide derived from human CDC16/APC6 around the phosphorylation site of Ser560. AA range:526-575

Specificity

Phospho-Cdc16 (S560) Polyclonal Antibody detects endogenous levels of Cdc16 protein only when phosphorylated at S560. The name of modified sites may be influenced by many factors, such as species (the modified site was not originally found in human samples) and the change of protein sequence (the previous protein sequence is incomplete, and the protein sequence may be prolonged with the development of protein sequencing technology). When naming, we will use the "numbers" in historical reference to keep the sites consistent with the reports. The antibody binds to the following modification sequence (lowercase letters are modification sites):**lIsPP**

Target Information

Gene name CDC16

Protein Name Cell division cycle protein 16 homolog

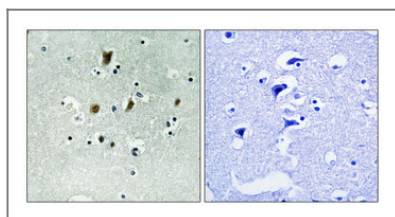
Organism	Gene ID	UniProt ID
Human	8881 ;	Q13042 ;
Mouse	69957 ;	Q8R349 ;

Cellular Localization Cytoplasm, cytoskeleton, microtubule organizing center, centrosome . Cytoplasm, cytoskeleton, spindle . Colocalizes with CDC27 to the centrosome at all stages of the cell cycle and to the mitotic spindle.

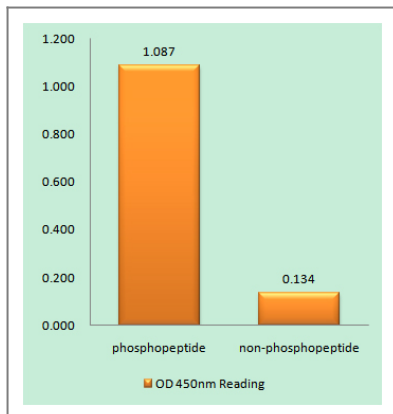
Tissue specificity Aorta endothelial cell,Brain,Epithelium,Lung,Skin,

Function Function:Component of the anaphase promoting complex/cyclosome (APC/C), a cell cycle-regulated ubiquitin ligase that controls progression through mitosis and the G1 phase of the cell cycle.,pathway:Protein modification; protein ubiquitination.,PTM:Phosphorylated. Phosphorylation on Ser-560 occurs specifically during mitosis.,similarity:Belongs to the APC6/CDC16 family.,similarity:Contains 7 TPR repeats.,subcellular location:Colocalizes with CDC27 to the centrosome at all stages of the cell cycle and to the mitotic spindle.,subunit:The APC/C is composed of at least 11 subunits. Interacts with PPP5C and CDC20.,

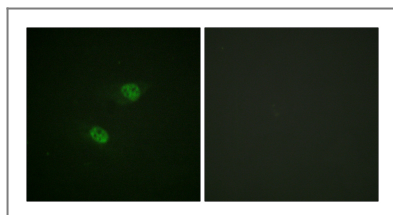
Validation Data



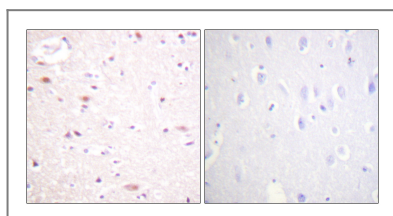
Immunohistochemical analysis of paraffin-embedded Human brain. Antibody was diluted at 1:100(4° overnight). High-pressure and temperature Tris-EDTA,pH8.0 was used for antigen retrieval. Negative contrl (right) obtained from antibody was pre-absorbed by immunogen peptide.



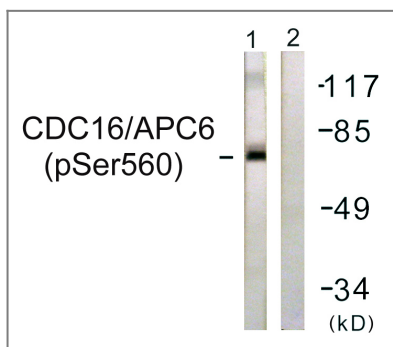
Enzyme-Linked Immunosorbent Assay (Phospho-ELISA) for Immunogen Phosphopeptide (Phospho-left) and Non-Phosphopeptide (Phospho-right), using CDC16/APC6 (Phospho-Ser560) Antibody



Immunofluorescence analysis of HeLa cells, using CDC16/APC6 (Phospho-Ser560) Antibody. The picture on the right is blocked with the phospho peptide.



Immunohistochemistry analysis of paraffin-embedded human brain, using CDC16/APC6 (Phospho-Ser560) Antibody. The picture on the right is blocked with the phospho peptide.



Western blot analysis of lysates from HUVEC cells, using CDC16/APC6 (Phospho-Ser560) Antibody. The lane on the right is blocked with the phospho peptide.

Contact information

Orders: order@immunoway.com
 Support: tech@immunoway.com
 Telephone: 877-594-3616 (Toll Free), 408-747-0185
 Website: <http://www.immunoway.com>
 Address: 2200 Ringwood Ave San Jose, CA 95131 USA



Please scan the QR code to access additional product information:
CDC16/APC6 (Phospho Ser560) Rabbit pAb