

C/EBP ϵ (Phospho Thr74) Rabbit pAb

CatalogNo: YP0911 Orthogonal Validated 

Key Features

Host Species

- Rabbit

Reactivity

- Human, Mouse, Rat

Applications

- WB, IHC, IF, ELISA

MW

- 34kD (Observed)

Isotype

- IgG

Storage

Storage* -15°C to -25°C/1 year (Do not lower than -25°C)

Formulation Liquid in PBS containing 50% glycerol, 0.5% BSA and 0.02% sodium azide.

Recommended Dilution Ratios

WB 1:500-1:2000

IHC 1:100-1:300

IF 1:200-1:1000

ELISA 1:20000

Not yet tested in other applications.

Basic Information

Clonality Polyclonal

Immunogen Information

Immunogen The antiserum was produced against synthesized peptide derived from human C/EBP-epsilon around the phosphorylation site of Thr74. AA range:40-89

Specificity

Phospho-C/EBP ϵ (T74) Polyclonal Antibody detects endogenous levels of C/EBP ϵ protein only when phosphorylated at T74. The name of modified sites may be influenced by many factors, such as species (the modified site was not originally found in human samples) and the change of protein sequence (the previous protein sequence is incomplete, and the protein sequence may be prolonged with the development of protein sequencing technology). When naming, we will use the "numbers" in historical reference to keep the sites consistent with the reports. The antibody binds to the following modification sequence (lowercase letters are modification sites):PGtPA

Target Information

Gene name CEBPE

Protein Name CCAAT/enhancer-binding protein epsilon

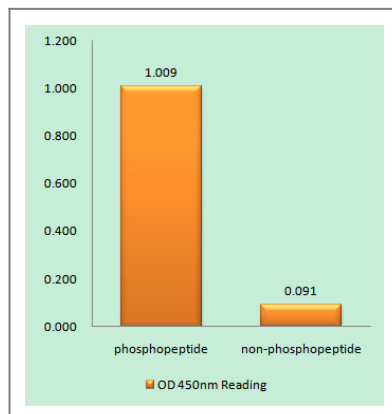
Organism	Gene ID	UniProt ID
Human	1053 ;	Q15744 ;
Mouse		Q6PZD9 ;

Cellular Localization Nucleus .

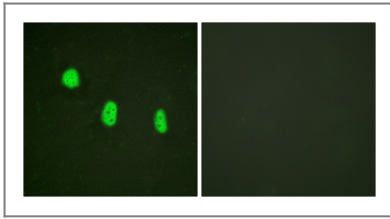
Tissue specificity Strongest expression occurs in promyelocyte and late-myeloblast-like cell lines.

Function Function:C/EBP are DNA-binding proteins that recognize two different motifs: the CCAAT homology common to many promoters and the enhanced core homology common to many enhancers.,online information:CEBPE mutation db,PTM:Phosphorylated.,similarity:Belongs to the bZIP family. C/EBP subfamily.,similarity:Contains 1 bZIP domain.,subunit:Binds DNA as a dimer and can form stable heterodimers with C/EBP delta.,tissue specificity:Strongest expression occurs in promyelocyte and late-myeloblast-like cell lines.,

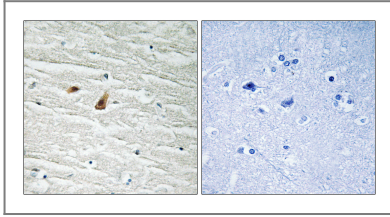
Validation Data



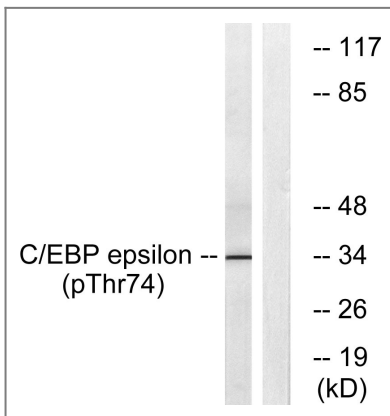
Enzyme-Linked Immunosorbent Assay (Phospho-ELISA) for Immunogen Phosphopeptide (Phospho-left) and Non-Phosphopeptide (Phospho-right), using C/EBP-epsilon (Phospho-Thr74) Antibody



Immunofluorescence analysis of HeLa cells, using C/EBP-epsilon (Phospho-Thr74) Antibody. The picture on the right is blocked with the phospho peptide.



Immunohistochemistry analysis of paraffin-embedded human brain, using C/EBP-epsilon (Phospho-Thr74) Antibody. The picture on the right is blocked with the phospho peptide.



Western blot analysis of lysates from HUVEC cells treated with UV 15', using C/EBP-epsilon (Phospho-Thr74) Antibody. The lane on the right is blocked with the phospho peptide.

Contact information

Orders: order@immunoway.com
Support: tech@immunoway.com
Telephone: 877-594-3616 (Toll Free), 408-747-0185
Website: <http://www.immunoway.com>
Address: 2200 Ringwood Ave San Jose, CA 95131 USA



Please scan the QR code to access additional product information:
C/EBP ϵ (Phospho Thr74) Rabbit pAb

For Research Use Only. Not for Use in Diagnostic Procedures.

[Antibody](#) | [ELISA Kits](#) | [Protein](#) | [Reagents](#)