

Gab 1 (Phospho Tyr659) Rabbit pAb

CatalogNo: YP0907 Orthogonal Validated 

Key Features

Host Species

- Rabbit

Reactivity

- Human, Mouse, Rat

Applications

- WB, IHC, IF, ELISA

MW

- 76kD (Observed)

Isotype

- IgG

Storage

Storage* -15°C to -25°C/1 year (Do not lower than -25°C)

Formulation Liquid in PBS containing 50% glycerol, 0.5% BSA and 0.02% sodium azide.

Recommended Dilution Ratios

WB 1:500-1:2000

IHC 1:100-1:300

IF 1:200-1:1000

ELISA 1:5000

Not yet tested in other applications.

Basic Information

Clonality Polyclonal

Immunogen Information

Immunogen The antiserum was produced against synthesized peptide derived from human GAB1 around the phosphorylation site of Tyr659. AA range:644-674

Specificity

Phospho-Gab 1 (Y659) Polyclonal Antibody detects endogenous levels of Gab 1 protein only when phosphorylated at Y659. The name of modified sites may be influenced by many factors, such as species (the modified site was not originally found in human samples) and the change of protein sequence (the previous protein sequence is incomplete, and the protein sequence may be prolonged with the development of protein sequencing technology). When naming, we will use the "numbers" in historical reference to keep the sites consistent with the reports. The antibody binds to the following modification sequence (lowercase letters are modification sites):VDyVV

Target Information

Gene name GAB1

Protein Name GRB2-associated-binding protein 1

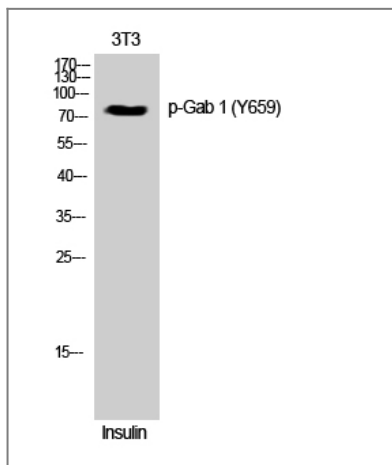
Organism	Gene ID	UniProt ID
Human	2549;	Q13480;
Mouse	14388;	Q9QYY0;

Cellular Localization cytosol,

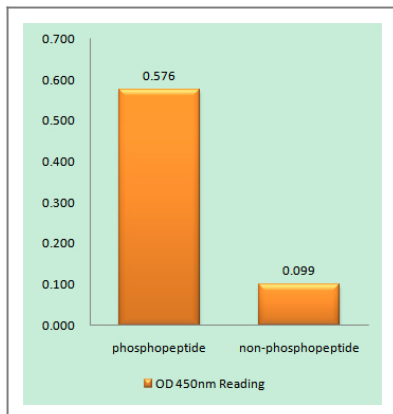
Tissue specificity Testis, Whole embryo,

Function Function: Probably involved in EGF and insulin receptor signaling., PTM: Phosphorylated on tyrosine residue(s) by the epidermal growth factor receptor (EGFR) and the insulin receptor (INSR). Tyrosine phosphorylation of GAB1 mediates interaction with several proteins that contain SH2 domains., similarity: Belongs to the GAB family., similarity: Contains 1 PH domain., subunit: Interacts with GRB2 and with other SH2-containing proteins. Interacts with phosphorylated LAT2.,

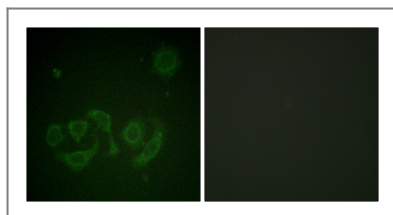
Validation Data



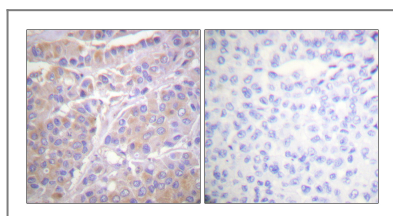
Western Blot analysis of 3T3 cells using Phospho-Gab 1 (Y659) Polyclonal Antibody



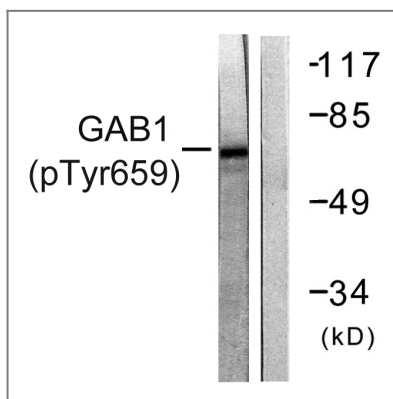
Enzyme-Linked Immunosorbent Assay (Phospho-ELISA) for Immunogen Phosphopeptide (Phospho-left) and Non-Phosphopeptide (Phospho-right), using GAB1 (Phospho-Tyr659) Antibody



Immunofluorescence analysis of HepG2 cell, using GAB1 (Phospho-Tyr659) Antibody. The lane on the right is blocked with the GAB1 (Phospho-Tyr659) peptide.



Immunohistochemistry analysis of paraffin-embedded human breast cancer, using GAB1 (Phospho-Tyr659) Antibody. The picture on the right is blocked with the GAB1 (Phospho-Tyr659) peptide.



Western blot analysis of GAB1 (Phospho-Tyr659) Antibody. The lane on the right is blocked with the GAB1 (Phospho-Tyr659) peptide.

Contact information

Orders: order@immunoway.com
 Support: tech@immunoway.com
 Telephone: 877-594-3616 (Toll Free), 408-747-0185
 Website: <http://www.immunoway.com>
 Address: 2200 Ringwood Ave San Jose, CA 95131 USA



Please scan the QR code to access additional product information:
Gab 1 (Phospho Tyr659) Rabbit pAb