

Bcr (Phospho Tyr360) Rabbit pAb

CatalogNo: YP0905

| Key Features

Host Species

- Rabbit

Reactivity

- Human, Mouse, Monkey

Applications

- WB, IHC, IF, ELISA

MW

- 142kD (Observed)

Isotype

- IgG

| Recommended Dilution Ratios

WB 1:500-1:2000

IHC 1:100-1:300

IF 1:200-1:1000

ELISA 1:40000

Not yet tested in other applications.

| Storage

Storage*

-15°C to -25°C/1 year (Do not lower than -25°C)

Formulation

Liquid in PBS containing 50% glycerol, 0.5% BSA and 0.02% sodium azide.

| Basic Information

Clonality

Polyclonal

| Immunogen Information

Immunogen

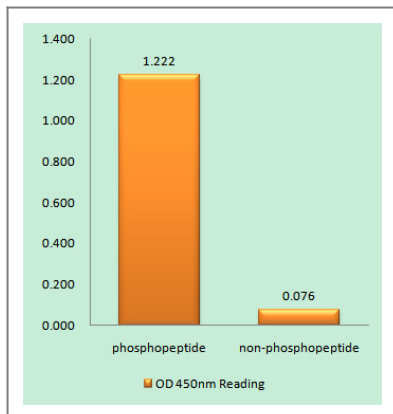
The antiserum was produced against synthesized peptide derived from human Bcr around the phosphorylation site of Tyr360. AA range: 331-380

Specificity Phospho-Bcr (Y360) Polyclonal Antibody detects endogenous levels of Bcr protein only when phosphorylated at Y360. The name of modified sites may be influenced by many factors, such as species (the modified site was not originally found in human samples) and the change of protein sequence (the previous protein sequence is incomplete, and the protein sequence may be prolonged with the development of protein sequencing technology). When naming, we will use the "numbers" in historical reference to keep the sites consistent with the reports. The antibody binds to the following modification sequence (lowercase letters are modification sites):TTyRM

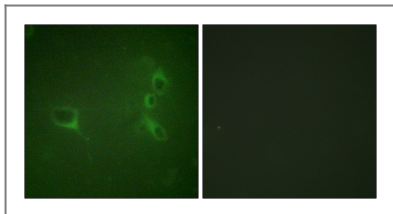
| Target Information

Gene name	BCR		
Protein Name	Breakpoint cluster region protein		
	Organism	Gene ID	UniProt ID
	Human	613;	P11274;
	Mouse	110279;	Q6PAJ1;
Cellular Localization	Cell junction, synapse, postsynaptic density . Cell projection, dendritic spine . Cell projection, axon . Cell junction, synapse .		
Tissue specificity	Brain,Epithelium,Platelet,Renal cell carcinoma,T-cell,		
Function	Catalytic activity:ATP + a protein = ADP + a phosphoprotein.,Disease:A chromosomal aberration involving BCR is a cause of chronic myeloid leukemia (CML) [MIM:608232]. Translocation t(9;22)(q34;q11) with ABL1. The translocation produces a BCR-ABL found also in acute myeloid leukemia (AML) and acute lymphoblastic leukemia (ALL).,Domain:The DH domain is involved in interaction with CCPG1.,Domain:The region involved in binding to ABL1 SH2-domain is rich in serine residues and needs to be Ser/Thr phosphorylated prior to SH2 binding. This region is essential for the activation of the ABL1 tyrosine kinase and transforming potential of the chimeric BCR-ABL oncogene.,Function:GTPase-activating protein for RAC1 and CDC42. Promotes the exchange of RAC or CDC42-bound GDP by GTP, thereby activating them. Displays serine/threonine kinase activity.,PTM:Autophosphorylated.,similarity:Contains 1 C2 domain.,similarity:Contains 1 DH (DBL-homology) domain.,similarity:Contains 1 PH domain.,similarity:Contains 1 Rho-GAP domain.,subunit:Homotetramer. Interacts with PDZK1. May interact with CCPG1.,		

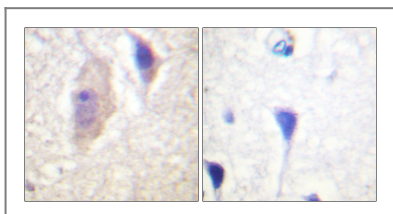
| Validation Data



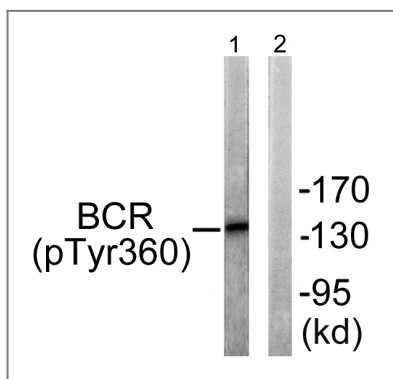
Enzyme-Linked Immunosorbent Assay (Phospho-ELISA) for Immunogen Phosphopeptide (Phospho-left) and Non-Phosphopeptide (Phospho-right), using Bcr (Phospho-Tyr360) Antibody



Immunofluorescence analysis of NIH/3T3 cells, using Bcr (Phospho-Tyr360) Antibody. The picture on the right is blocked with the phospho peptide.



Immunohistochemistry analysis of paraffin-embedded human brain, using Bcr (Phospho-Tyr360) Antibody. The picture on the right is blocked with the phospho peptide.



Western blot analysis of lysates from COS7 cells, using Bcr (Phospho-Tyr360) Antibody. The lane on the right is blocked with the phospho peptide.

Contact information

Orders: order@immunoway.com
 Support: tech@immunoway.com
 Telephone: 877-594-3616 (Toll Free), 408-747-0185
 Website: <http://www.immunoway.com>
 Address: 2200 Ringwood Ave San Jose, CA 95131 USA



Please scan the QR code
 to access additional
 product information:
**Bcr (Phospho
 Tyr360) Rabbit pAb**