

A-Raf (Phospho Tyr302) Rabbit pAb

CatalogNo: YP0904 Orthogonal Validated 

Key Features

Host Species

- Rabbit

Reactivity

- Human, Mouse, Rat

Applications

- WB, IHC, IF, ELISA

MW

- 68kD (Observed)

Isotype

- IgG

Storage

Storage* -15°C to -25°C/1 year (Do not lower than -25°C)

Formulation Liquid in PBS containing 50% glycerol, 0.5% BSA and 0.02% sodium azide.

Recommended Dilution Ratios

WB 1:500-1:2000

IHC 1:100-1:300

IF 1:200-1:1000

ELISA 1:20000

Not yet tested in other applications.

Basic Information

Clonality Polyclonal

Immunogen Information

Immunogen The antiserum was produced against synthesized peptide derived from human A-RAF around the phosphorylation site of Tyr302. AA range: 276-325

Specificity

Phospho-A-Raf (Y302) Polyclonal Antibody detects endogenous levels of A-Raf protein only when phosphorylated at Y302. The name of modified sites may be influenced by many factors, such as species (the modified site was not originally found in human samples) and the change of protein sequence (the previous protein sequence is incomplete, and the protein sequence may be prolonged with the development of protein sequencing technology). When naming, we will use the "numbers" in historical reference to keep the sites consistent with the reports. The antibody binds to the following modification sequence (lowercase letters are modification sites):GYyWE

Target Information

Gene name ARAF

Protein Name Serine/threonine-protein kinase A-Raf

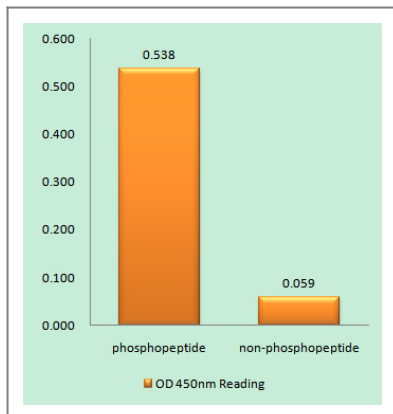
Organism	Gene ID	UniProt ID
Human	369 ;	P10398 ;
Mouse	11836 ;	P04627 ;
Rat	64363 ;	P14056 ;

Cellular Localization intracellular,mitochondrion,cytosol,

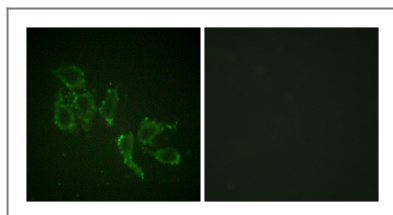
Tissue specificity Predominantly in urogenital tissues.

Function Catalytic activity:ATP + a protein = ADP + a phosphoprotein.,cofactor:Binds 2 zinc ions per subunit.,Function:Involved in the transduction of mitogenic signals from the cell membrane to the nucleus.,similarity:Belongs to the protein kinase superfamily.,similarity:Belongs to the protein kinase superfamily. TKL Ser/Thr protein kinase family. RAF subfamily.,similarity:Contains 1 phorbol-ester/DAG-type zinc finger.,similarity:Contains 1 protein kinase domain.,similarity:Contains 1 RBD (Ras-binding) domain.,subunit:Interacts with TH1L/NELFD.,tissue specificity:Predominantly in urogenital tissues.,

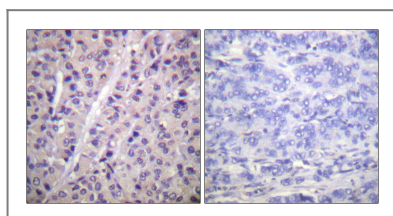
Validation Data



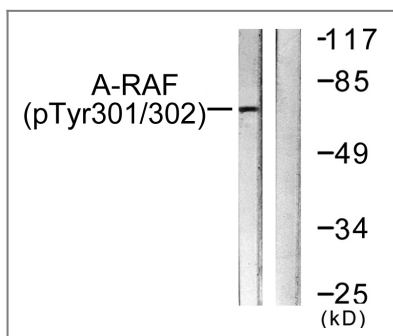
Enzyme-Linked Immunosorbent Assay (Phospho-ELISA) for Immunogen Phosphopeptide (Phospho-left) and Non-Phosphopeptide (Phospho-right), using A-RAF (Phospho-Tyr302) Antibody



Immunofluorescence analysis of HepG2 cells, using A-RAF (Phospho-Tyr302) Antibody. The picture on the right is blocked with the phospho peptide.



Immunohistochemistry analysis of paraffin-embedded human breast carcinoma, using A-RAF (Phospho-Tyr302) Antibody. The picture on the right is blocked with the phospho peptide.



Western blot analysis of lysates from HeLa cells treated with PMA 125ng/ml 30', using A-RAF (Phospho-Tyr302) Antibody. The lane on the right is blocked with the phospho peptide.

Contact information

Orders: order@immunoway.com
 Support: tech@immunoway.com
 Telephone: 877-594-3616 (Toll Free), 408-747-0185
 Website: <http://www.immunoway.com>
 Address: 2200 Ringwood Ave San Jose, CA 95131 USA



Please scan the QR code to access additional product information:
A-Raf (Phospho Tyr302) Rabbit pAb