

## MRLC2 (Phospho Ser20) Rabbit pAb

CatalogNo: YP0901 Orthogonal Validated 

### Key Features

#### Host Species

- Rabbit

#### Reactivity

- Human, Mouse, Rat

#### Applications

- WB, IHC, IF, ELISA

#### MW

- 18kD (Observed)

#### Isotype

- IgG

### Storage

**Storage\*** -15°C to -25°C/1 year (Do not lower than -25°C)

**Formulation** Liquid in PBS containing 50% glycerol, 0.5% BSA and 0.02% sodium azide.

### Recommended Dilution Ratios

**WB 1:500-1:2000**

**IHC 1:100-1:300**

**IF 1:200-1:1000**

**ELISA 1:20000**

**Not yet tested in other applications.**

### Basic Information

**Clonality** Polyclonal

### Immunogen Information

**Immunogen** The antiserum was produced against synthesized peptide derived from human Myosin regulatory light chain 2 around the phosphorylation site of Ser18. AA range: 3-52

## Specificity

Phospho-MRLC2 (S20) Polyclonal Antibody detects endogenous levels of MRLC2 protein only when phosphorylated at S20. The name of modified sites may be influenced by many factors, such as species (the modified site was not originally found in human samples) and the change of protein sequence (the previous protein sequence is incomplete, and the protein sequence may be prolonged with the development of protein sequencing technology). When naming, we will use the "numbers" in historical reference to keep the sites consistent with the reports. The antibody binds to the following modification sequence (lowercase letters are modification sites):ATsNV

---

## Target Information

**Gene name** MYL9

**Protein Name** Myosin regulatory light polypeptide 9

Organism	Gene ID	UniProt ID
Human	<a href="#">10398</a> ; <a href="#">10627</a> ;	<a href="#">P24844</a> ;
Mouse	<a href="#">98932</a> ;	<a href="#">Q9CQ19</a> ;
Rat	<a href="#">296313</a> ;	<a href="#">Q64122</a> ;

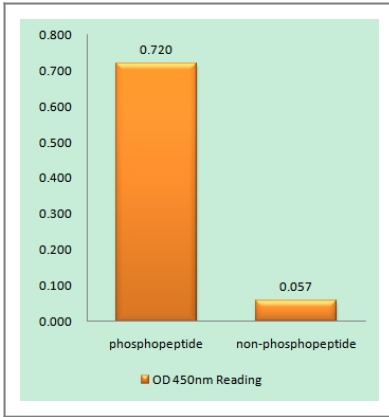
**Cellular Localization** Cytoplasm, cytoskeleton . Cytoplasm, cell cortex . Colocalizes with F-actin, MYH9 and PIEZO1 at the actomyosin cortex in myoblasts. .

**Tissue specificity** Smooth muscle tissues and in some, but not all, nonmuscle cells.

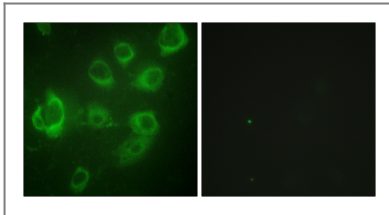
**Function** Function:Myosin regulatory subunit that plays an important role in regulation of both smooth muscle and nonmuscle cell contractile activity via its phosphorylation. Implicated in cytokinesis, receptor capping, and cell locomotion.,miscellaneous:This chain binds calcium.,PTM:Phosphorylation increases the actin-activated myosin ATPase activity and thereby regulates the contractile activity. It is required to generate the driving force in the migration of the cells but not necessary for localization of myosin-2 at the leading edge.,similarity:Contains 3 EF-hand domains.,subunit:Myosin is an hexamer of 2 heavy chains and 4 light chains.,tissue specificity:Smooth muscle tissues and in some, but not all, nonmuscle cells.,

---

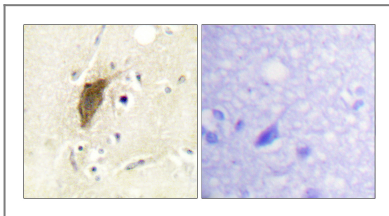
## Validation Data



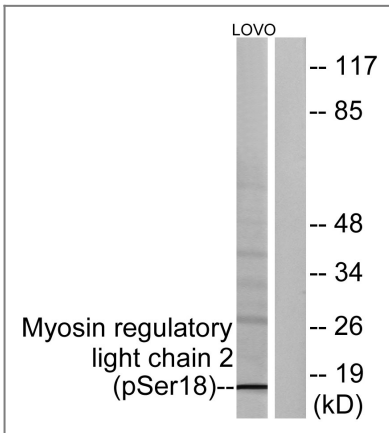
Enzyme-Linked Immunosorbent Assay (Phospho-ELISA) for Immunogen Phosphopeptide (Phospho-left) and Non-Phosphopeptide (Phospho-right), using Myosin regulatory light chain 2 (Phospho-Ser18) Antibody



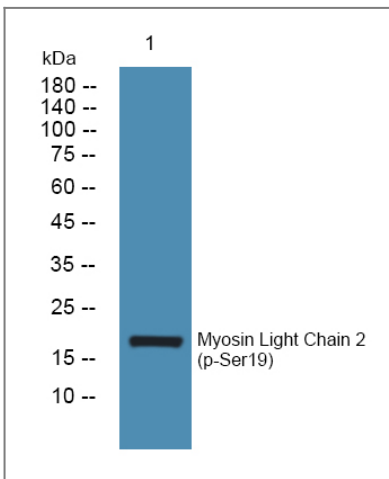
Immunofluorescence analysis of HUVEC cells, using Myosin regulatory light chain 2 (Phospho-Ser18) Antibody. The picture on the right is blocked with the phospho peptide.



Immunohistochemistry analysis of paraffin-embedded human brain, using Myosin regulatory light chain 2 (Phospho-Ser18) Antibody. The picture on the right is blocked with the phospho peptide.



Western blot analysis of lysates from LOVO cells treated with H<sub>2</sub>O<sub>2</sub> 100uM 30', using Myosin regulatory light chain 2 (Phospho-Ser18) Antibody. The lane on the right is blocked with the phospho peptide.



Western blot analysis of lysates from PC12 cells, primary antibody was diluted at 1:1000, 4° over night

## | Contact information

Orders: order@immunoway.com  
Support: tech@immunoway.com  
Telephone: 877-594-3616 (Toll Free), 408-747-0185  
Website: <http://www.immunoway.com>  
Address: 2200 Ringwood Ave San Jose, CA 95131 USA



Please scan the QR code to access additional product information:  
**MRLC2 (Phospho Ser20) Rabbit pAb**

---

For Research Use Only. Not for Use in Diagnostic Procedures.

[Antibody](#) | [ELISA Kits](#) | [Protein](#) | [Reagents](#)