

# Rabphilin-3A (Phospho Ser237) Rabbit pAb

CatalogNo: YP0891 Orthogonal Validated 

## Key Features

### Host Species

- Rabbit

### Reactivity

- Human, Mouse, Rat

### Applications

- WB, IHC, IF, ELISA

### MW

- 75kD (Observed)

### Isotype

- IgG

## Storage

**Storage\*** -15°C to -25°C/1 year (Do not lower than -25°C)

**Formulation** Liquid in PBS containing 50% glycerol, 0.5% BSA and 0.02% sodium azide.

## Recommended Dilution Ratios

**WB 1:500-1:2000**

**IHC 1:100-1:300**

**IF 1:200-1:1000**

**ELISA 1:10000**

**Not yet tested in other applications.**

## Basic Information

**Clonality** Polyclonal

## Immunogen Information

**Immunogen** The antiserum was produced against synthesized peptide derived from human Rabphilin 3A around the phosphorylation site of Ser237. AA range: 203-252

**Specificity**

Phospho-Rabphilin-3A (S237) Polyclonal Antibody detects endogenous levels of Rabphilin-3A protein only when phosphorylated at S237. The name of modified sites may be influenced by many factors, such as species (the modified site was not originally found in human samples) and the change of protein sequence (the previous protein sequence is incomplete, and the protein sequence may be prolonged with the development of protein sequencing technology). When naming, we will use the "numbers" in historical reference to keep the sites consistent with the reports. The antibody binds to the following modification sequence (lowercase letters are modification sites):RAS EA

---

## | Target Information

**Gene name** RPH3A

**Protein Name** Rabphilin-3A

Organism	Gene ID	UniProt ID
Human	<a href="#">22895;</a>	<a href="#">Q9Y2J0;</a>
Mouse	<a href="#">19894;</a>	<a href="#">P47708;</a>
Rat	<a href="#">171039;</a>	<a href="#">P47709;</a>

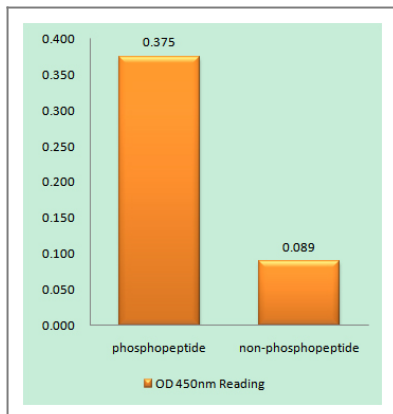
**Cellular Localization** Cytoplasmic vesicle, secretory vesicle, synaptic vesicle membrane . Cell projection, dendritic spine . Cell junction, synapse, postsynaptic cell membrane . Membrane ; Peripheral membrane protein .

**Tissue specificity** Brain,Lung,

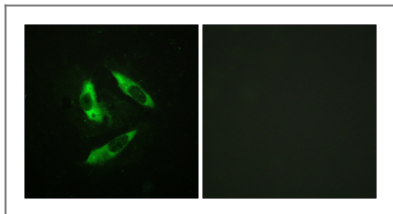
**Function** Function:Protein transport. Probably involved with Ras-related protein Rab-3A in synaptic vesicle traffic and/or synaptic vesicle fusion. Could play a role in neurotransmitter release by regulating membrane flow in the nerve terminal.,similarity:Contains 1 FYVE-type zinc finger.,similarity:Contains 1 RabBD (Rab-binding) domain.,similarity:Contains 2 C2 domains.,

---

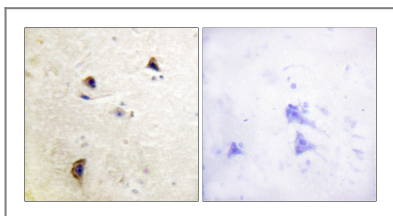
## | Validation Data



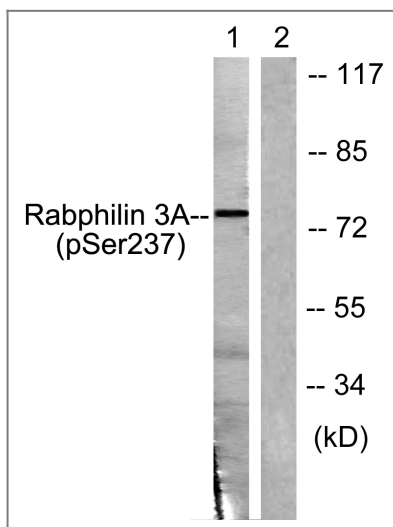
Enzyme-Linked Immunosorbent Assay (Phospho-ELISA) for Immunogen Phosphopeptide (Phospho-left) and Non-Phosphopeptide (Phospho-right), using Rabphilin 3A (Phospho-Ser237) Antibody



Immunofluorescence analysis of HeLa cells, using Rabphilin 3A (Phospho-Ser237) Antibody. The picture on the right is blocked with the phospho peptide.



Immunohistochemistry analysis of paraffin-embedded human brain, using Rabphilin 3A (Phospho-Ser237) Antibody. The picture on the right is blocked with the phospho peptide.



Western blot analysis of lysates from RAW264.7 cells treated with Calyculin 100nM 15', using Rabphilin 3A (Phospho-Ser237) Antibody. The lane on the right is blocked with the phospho peptide.

## Contact information

Orders: order@immunoway.com  
 Support: tech@immunoway.com  
 Telephone: 877-594-3616 (Toll Free), 408-747-0185  
 Website: <http://www.immunoway.com>  
 Address: 2200 Ringwood Ave San Jose, CA 95131 USA



Please scan the QR code to access additional product information:

**Rabphilin-3A  
 (Phospho Ser237)  
 Rabbit pAb**

