

Cytokeratin 18 (Phospho Ser33) Rabbit pAb

CatalogNo: YP0859

Key Features

Host Species

- Rabbit

Reactivity

- Human, Mouse, Rat

Applications

- WB, IHC, IF, ELISA

MW

- 47kD (Observed)

Isotype

- IgG

Storage

Storage* -15°C to -25°C/1 year (Do not lower than -25°C)

Formulation Liquid in PBS containing 50% glycerol, 0.5% BSA and 0.02% sodium azide.

Recommended Dilution Ratios

WB 1:500-1:2000

IHC 1:100-1:300

IF 1:200-1:1000

ELISA 1:5000

Not yet tested in other applications.

Basic Information

Clonality Polyclonal

Immunogen Information

Immunogen The antiserum was produced against synthesized peptide derived from human Keratin 18 around the phosphorylation site of Ser33. AA range: 1-50

Specificity

Phospho-Cytokeratin 18 (S33) Polyclonal Antibody detects endogenous levels of Cytokeratin 18 protein only when phosphorylated at S33. The name of modified sites may be influenced by many factors, such as species (the modified site was not originally found in human samples) and the change of protein sequence (the previous protein sequence is incomplete, and the protein sequence may be prolonged with the development of protein sequencing technology). When naming, we will use the "numbers" in historical reference to keep the sites consistent with the reports. The antibody binds to the following modification sequence (lowercase letters are modification sites):AAsVY

Target Information

Gene name KRT18

Protein Name Keratin type I cytoskeletal 18

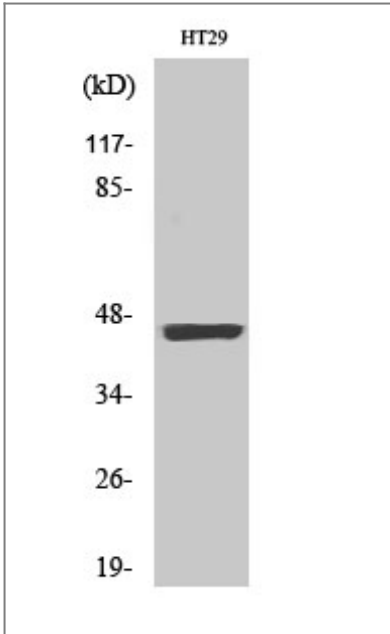
Organism	Gene ID	UniProt ID
Human	3875 ;	P05783 ;
Mouse	16668 ;	P05784 ;
Rat	294853 ;	Q5BJY9 ;

Cellular Localization Cytoplasm, perinuclear region. Nucleus, nucleolus.

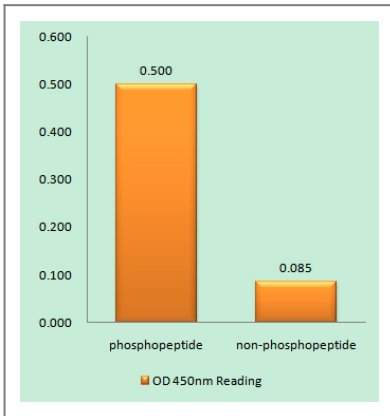
Tissue specificity Expressed in colon, placenta, liver and very weakly in exocervix. Increased expression observed in lymph nodes of breast carcinoma.

Function Disease:Defects in KRT18 are a cause of cryptogenic cirrhosis [MIM:215600].,Function:Involved in the uptake of thrombin-antithrombin complexes by hepatic cells (By similarity). When phosphorylated, plays a role in filament reorganization. Involved in the delivery of mutated CFTR to the plasma membrane. Together with KRT8, is involved in interleukin-6 (IL-6)-mediated barrier protection.,induction:By IL-6.,miscellaneous:There are two types of cytoskeletal and microfibrillar keratin: I (acidic; 40-55 kDa) and II (neutral to basic; 56-70 kDa).,PTM:O-glycosylated at multiple sites; glycans consist of single N-acetylglucosamine residues.,PTM:Phosphorylation at Ser-34 increases during mitosis. Hyperphosphorylated at Ser-53 in diseased cirrhosis liver. Phosphorylation increases by IL-6.,PTM:Proteolytically cleaved by caspases during epithelial cell apoptosis. Cleavage occurs at Asp-238 by either caspase-3, caspase-6 or caspase-7.,similarity:Belongs to the intermediate filament family.,subunit:Heterotetramer of two type I and two type II keratins. Keratin-18 associates with keratin-8. Interacts with the thrombin-antithrombin complex (By similarity). Interacts with PNN, HCV core protein and mutated CFTR. Interacts with YWHAЕ, YWHAH and YWHAZ only when phosphorylated. Interacts with DNAJB6, TCHP and TRADD.,tissue specificity:Expressed in colon, placenta, liver and very weakly in exocervix. Increased expression observed in lymph nodes of breast carcinoma.,

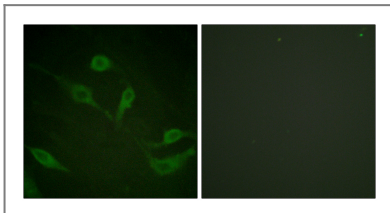
Validation Data



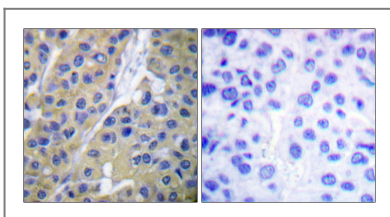
Western Blot analysis of various cells using Phospho-Cytokeratin 18 (S33) Polyclonal Antibody diluted at 1:2000



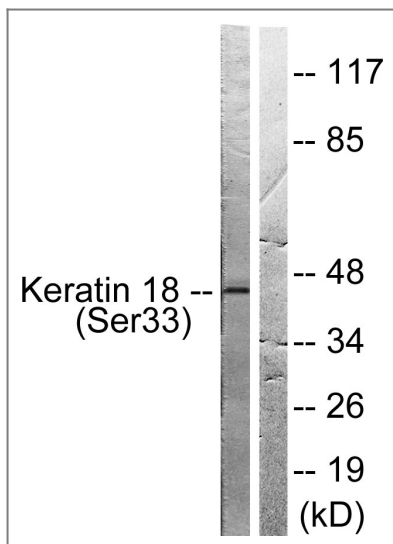
Enzyme-Linked Immunosorbent Assay (Phospho-ELISA) for Immunogen Phosphopeptide (Phospho-left) and Non-Phosphopeptide (Phospho-right), using Keratin 18 (Phospho-Ser33) Antibody



Immunofluorescence analysis of HeLa cells, using Keratin 18 (Phospho-Ser33) Antibody. The picture on the right is blocked with the phospho peptide.



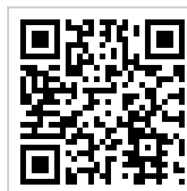
Immunohistochemistry analysis of paraffin-embedded human breast carcinoma, using Keratin 18 (Phospho-Ser33) Antibody. The picture on the right is blocked with the phospho peptide.



Western blot analysis of lysates from HT29 cells, using Keratin 18 (Phospho-Ser33) Antibody. The lane on the right is blocked with the phospho peptide.

Contact information

Orders: order@immunoway.com
Support: tech@immunoway.com
Telephone: 877-594-3616 (Toll Free), 408-747-0185
Website: <http://www.immunoway.com>
Address: 2200 Ringwood Ave San Jose, CA 95131 USA



Please scan the QR code to access additional product information:
Cytokeratin 18 (Phospho Ser33) Rabbit pAb

For Research Use Only. Not for Use in Diagnostic Procedures.

[Antibody](#) | [ELISA Kits](#) | [Protein](#) | [Reagents](#)