

## IκB-ε (Phospho Ser22) Rabbit pAb

CatalogNo: YP0858

Orthogonal Validated 

### Key Features

#### Host Species

- Rabbit

#### Reactivity

- Human, Mouse, Rat

#### Applications

- WB, IHC, IF, ELISA

#### MW

- 38kD (Observed)

#### Isotype

- IgG

### Recommended Dilution Ratios

**WB 1:500-1:2000****IHC 1:100-1:300****IF 1:200-1:1000****ELISA 1:40000****Not yet tested in other applications.**

### Storage

#### Storage\*

-15°C to -25°C/1 year (Do not lower than -25°C)

#### Formulation

Liquid in PBS containing 50% glycerol, 0.5% BSA and 0.02% sodium azide.

### Basic Information

#### Clonality

Polyclonal

### Immunogen Information

#### Immunogen

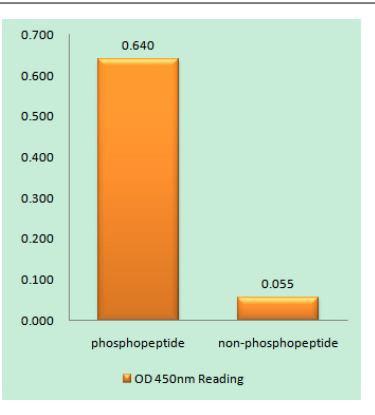
The antiserum was produced against synthesized peptide derived from human IκappaB-ε around the phosphorylation site of Ser22. AA range: 131-180

**Specificity** Phospho-IkB-ε (S22) Polyclonal Antibody detects endogenous levels of IkB-ε protein only when phosphorylated at S22. The name of modified sites may be influenced by many factors, such as species (the modified site was not originally found in human samples) and the change of protein sequence (the previous protein sequence is incomplete, and the protein sequence may be prolonged with the development of protein sequencing technology). When naming, we will use the "numbers" in historical reference to keep the sites consistent with the reports. The antibody binds to the following modification sequence (lowercase letters are modification sites): IEsLR

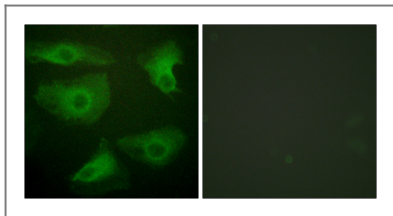
Target Information

Gene name	NFKBIE		
Protein Name	NF-kappa-B inhibitor epsilon		
	Organism	Gene ID	UniProt ID
	Human	<a href="#">4794</a> ;	<a href="#">O00221</a> ;
	Mouse	<a href="#">18037</a> ;	<a href="#">O54910</a> ;
Cellular Localization	Cytoplasm .		
Tissue specificity	Highly expressed in spleen, testis and lung, followed by kidney, pancreas, heart, placenta and brain. Also expressed in granulocytes and macrophages.		
Function	Function:Inhibits NF-kappa-B by complexing with and trapping it in the cytoplasm. Inhibits DNA-binding of NF-kappa-B p50-p65 and p50-c-Rel complexes.,PTM:Serine phosphorylated; followed by proteasome-dependent degradation.,similarity:Belongs to the NF-kappa-B inhibitor family.,similarity:Contains 6 ANK repeats.,subunit:Interacts with RELA, REL, NFKB1 nuclear factor NF-kappa-B p50 subunit and NFKB2 nuclear factor NF-kappa-B p52 subunit.,tissue specificity:Highly expressed in spleen, testis and lung, followed by kidney, pancreas, heart, placenta and brain. Also expressed in granulocytes and macrophages.,		

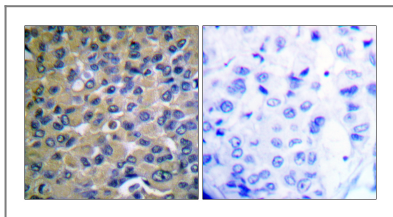
Validation Data



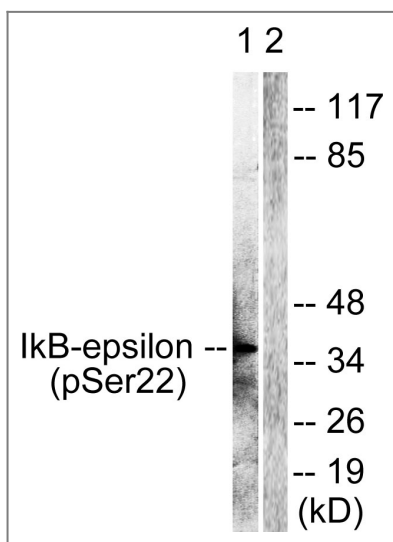
Enzyme-Linked Immunosorbent Assay (Phospho-ELISA) for Immunogen Phosphopeptide (Phospho-left) and Non-Phosphopeptide (Phospho-right), using IkappaB-epsilon (Phospho-Ser22) Antibody



Immunofluorescence analysis of HeLa cells, using IkappaB-epsilon (Phospho-Ser22) Antibody. The picture on the right is blocked with the phospho peptide.



Immunohistochemistry analysis of paraffin-embedded human breast carcinoma, using IkappaB-epsilon (Phospho-Ser22) Antibody. The picture on the right is blocked with the phospho peptide.



Western blot analysis of lysates from Jurkat cells treated with TNF- $\alpha$  20ng/ml 30', using IkappaB-epsilon (Phospho-Ser22) Antibody. The lane on the right is blocked with the phospho peptide.

## Contact information

Orders: [order@immunoway.com](mailto:order@immunoway.com)  
 Support: [tech@immunoway.com](mailto:tech@immunoway.com)  
 Telephone: 877-594-3616 (Toll Free), 408-747-0185  
 Website: <http://www.immunoway.com>  
 Address: 2200 Ringwood Ave San Jose, CA 95131 USA



Please scan the QR code to access additional product information:  
**IkB- $\epsilon$  (Phospho-Ser22) Rabbit pAb**

For Research Use Only. Not for Use in Diagnostic Procedures.

[Antibody](#) | [ELISA Kits](#) | [Protein](#) | [Reagents](#)