

Adducin α/β (Phospho Ser726/713) Rabbit pAb

CatalogNo: YP0854 Orthogonal Validated 

Key Features

Host Species

- Rabbit

Reactivity

- Human, Mouse, Rat

Applications

- WB, IHC, IF, ELISA

MW

- 80kD (Observed)

Isotype

- IgG

Storage

Storage* -15°C to -25°C/1 year (Do not lower than -25°C)

Formulation Liquid in PBS containing 50% glycerol, 0.5% BSA and 0.02% sodium azide.

Recommended Dilution Ratios

WB 1:500-1:2000

IHC 1:100-1:300

IF 1:200-1:1000

ELISA 1:40000

Not yet tested in other applications.

Basic Information

Clonality Polyclonal

Immunogen Information

Immunogen The antiserum was produced against synthesized peptide derived from human ADD1 around the phosphorylation site of Ser726. AA range: 688-737

Specificity

This antibody detects endogenous Phospho of Adducin α or β protein only when phosphorylated at Human:S726/S713, Mouse:S724/S712, Rat:S724/S712. The name of modified sites may be influenced by many factors, such as species (the modified site was not originally found in human samples) and the change of protein sequence (the previous protein sequence is incomplete, and the protein sequence may be prolonged with the development of protein sequencing technology). When naming, we will use the "numbers" in historical reference to keep the sites consistent with the reports. The antibody binds to the following modification sequence (lowercase letters are modification sites):TPsFL

| Target Information

Gene name ADD1/ADD2

Protein Name Alpha-adducin/Beta-adducin

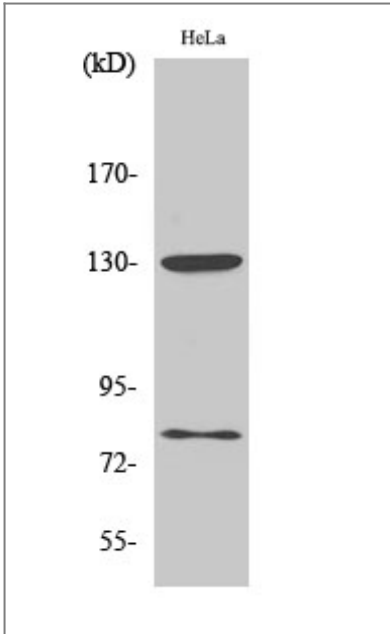
Organism	Gene ID	UniProt ID
Human	118 ; 119 ;	P35611 ; P35612 ;
Mouse	11518 ; 11519 ;	
Rat	24170 ; 24171 ;	Q63028 ; Q05764 ;

Cellular Localization Cytoplasm, cytoskeleton. Cell membrane; Peripheral membrane protein; Cytoplasmic side.

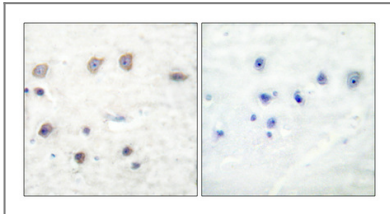
Tissue specificity Expressed in all tissues. Found in much higher levels in reticulocytes than the beta subunit.

Function Alternative products:Additional isoforms seem to exist,Domain:Each subunit is comprised of three regions: a NH2-terminal protease-resistant globular head region, a short connecting subdomain, and a protease-sensitive tail region.,Function:Membrane-cytoskeleton-associated protein that promotes the assembly of the spectrin-actin network. Binds to calmodulin.,PTM:The N-terminus is blocked.,similarity:Belongs to the aldolase class II family. Adducin subfamily.,subunit:Heterodimer of an alpha and a beta subunit or an alpha and a gamma subunit. Binds ROCK1.,tissue specificity:Expressed in all tissues. Found in much higher levels in reticulocytes than the beta subunit.,

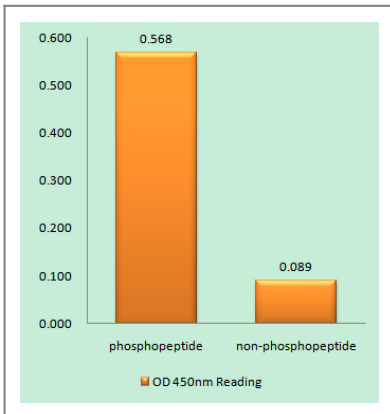
| Validation Data



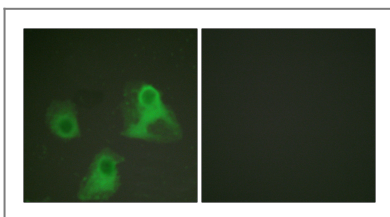
Western Blot analysis of various cells using Phospho-Adducin α/β (S726/713) Polyclonal Antibody diluted at 1:1000



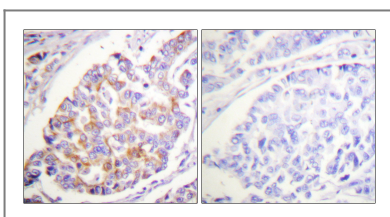
Immunohistochemical analysis of paraffin-embedded Human breast cancer. Antibody was diluted at 1:100 (4° overnight). High-pressure and temperature Tris-EDTA, pH 8.0 was used for antigen retrieval. Negative control (right) obtained from antibody was pre-absorbed by immunogen peptide.



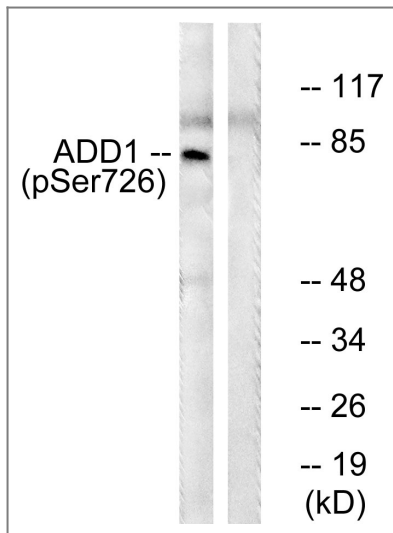
Enzyme-Linked Immunosorbent Assay (Phospho-ELISA) for Immunogen Phosphopeptide (Phospho-left) and Non-Phosphopeptide (Phospho-right), using ADD1 (Phospho-Ser726) Antibody



Immunofluorescence analysis of HeLa cells, using ADD1 (Phospho-Ser726) Antibody. The picture on the right is blocked with the phospho peptide.



Immunohistochemistry analysis of paraffin-embedded human breast carcinoma, using ADD1 (Phospho-Ser726) Antibody. The picture on the right is blocked with the phospho peptide.



Western blot analysis of lysates from HeLa cells treated with Forskolin 40nM 30', using ADD1 (Phospho-Ser726) Antibody. The lane on the right is blocked with the phospho peptide.

Contact information

Orders: order@immunoway.com
Support: tech@immunoway.com
Telephone: 877-594-3616 (Toll Free), 408-747-0185
Website: <http://www.immunoway.com>
Address: 2200 Ringwood Ave San Jose, CA 95131 USA



Please scan the QR code to access additional product information:
Adducin α/β (Phospho Ser726/713) Rabbit pAb

For Research Use Only. Not for Use in Diagnostic Procedures.

[Antibody](#) | [ELISA Kits](#) | [Protein](#) | [Reagents](#)