

# PKC $\delta$ (Phospho Ser645) Rabbit pAb

CatalogNo: YP0851

## Key Features

### Host Species

- Rabbit

### Reactivity

- Human, Monkey

### Applications

- WB, IHC, IF, ELISA

### MW

- 77kD (Observed)

### Isotype

- IgG

## Storage

**Storage\*** -15°C to -25°C/1 year (Do not lower than -25°C)

**Formulation** Liquid in PBS containing 50% glycerol, 0.5% BSA and 0.02% sodium azide.

## Recommended Dilution Ratios

**WB 1:500-1:2000**

**IHC 1:100-1:300**

**ELISA 1:10000**

**IF 1:50-200**

## Basic Information

**Clonality** Polyclonal

## Immunogen Information

**Immunogen** The antiserum was produced against synthesized peptide derived from human PKC delta around the phosphorylation site of Ser645. AA range:612-661

**Specificity** Phospho-PKC  $\delta$  (S645) Polyclonal Antibody detects endogenous levels of PKC  $\delta$  protein only when phosphorylated at S645. The name of modified sites may be influenced by many factors, such as species (the modified site was not originally found in human samples) and the change of protein sequence (the previous protein sequence is incomplete, and the protein sequence may be prolonged with the development of protein sequencing technology). When naming, we will use the "numbers" in historical reference to keep the sites consistent with the reports. The antibody binds to the following modification sequence (lowercase letters are modification sites):RLsYS

---

## | Target Information

**Gene name** PRKCD

**Protein Name** Protein kinase C delta type

Organism	Gene ID	UniProt ID
Human	<a href="#">5580</a> ;	<a href="#">Q05655</a> ;
Mouse	<a href="#">18753</a> ;	<a href="#">P28867</a> ;
Rat	<a href="#">170538</a> ;	<a href="#">P09215</a> ;

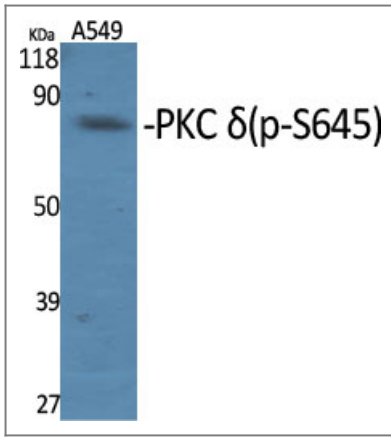
**Cellular Localization** Cytoplasm . Cytoplasm, perinuclear region . Nucleus . Cell membrane ; Peripheral membrane protein . Mitochondrion . Endomembrane system . Translocates to the mitochondria upon apoptotic stimulation. Upon activation, translocates to the plasma membrane followed by partial location to the endolysosomes (PubMed:17303575). .

**Tissue specificity** Epithelium,Hippocampus,Liver,Platelet,Skin,

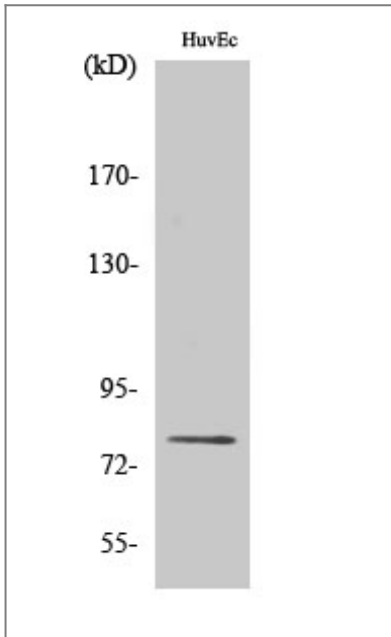
**Function** Catalytic activity:ATP + a protein = ADP + a phosphoprotein.,Domain:The C1 domain, containing the phorbol ester/DAG-type region 1 (C1A) and 2 (C1B), is the diacylglycerol sensor.,Domain:The C2 domain is a non-calcium binding domain. It binds proteins containing phosphotyrosine in a sequence-specific manner.,enzyme regulation:Three specific sites; Thr-507 (activation loop of the kinase domain), Ser-645 (turn motif) and Ser-664 (hydrophobic region), need to be phosphorylated for its full activation.,Function:This is calcium-independent, phospholipid-dependent, serine- and threonine-specific enzyme. PKC is activated by diacylglycerol which in turn phosphorylates a range of cellular proteins. PKC also serves as the receptor for phorbol esters, a class of tumor promoters. May play a role in antigen-dependent control of B-cell function. Phosphorylates MUC1 in the C-terminal and regulates the interaction between MUC1 and beta-catenin.,PTM:Phosphorylated on Thr-507, within the activation loop. Autophosphorylated and/or phosphorylated. Although the Thr-507 phosphorylation occurs it is not a prerequisite for enzymatic activity.,similarity:Belongs to the protein kinase superfamily. AGC Ser/Thr protein kinase family. PKC subfamily.,similarity:Contains 1 AGC-kinase C-terminal domain.,similarity:Contains 1 C2 domain.,similarity:Contains 1 protein kinase domain.,similarity:Contains 2 phorbol-ester/DAG-type zinc fingers.,subunit:Interacts with PDK1, RAD9A, CDCP1 and MUC1.,

---

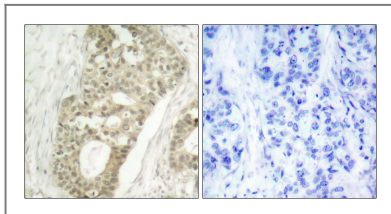
## | Validation Data



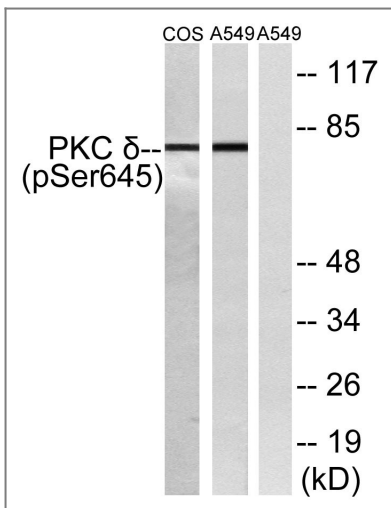
Western Blot analysis of various cells using Phospho-PKC  $\delta$  (S645) Polyclonal Antibody diluted at 1:1000



Western Blot analysis of HuvEc cells using Phospho-PKC  $\delta$  (S645) Polyclonal Antibody diluted at 1:1000



Immunohistochemistry analysis of paraffin-embedded human breast carcinoma, using PKC delta (Phospho-Ser645) Antibody. The picture on the right is blocked with the phospho peptide.



Western blot analysis of lysates from COS7 cells and A549 cells, using PKC delta (Phospho-Ser645) Antibody. The lane on the right is blocked with the phospho peptide.

## | Contact information

Orders: order@immunoway.com  
Support: tech@immunoway.com  
Telephone: 877-594-3616 (Toll Free), 408-747-0185  
Website: <http://www.immunoway.com>  
Address: 2200 Ringwood Ave San Jose, CA 95131 USA



Please scan the QR code to access additional product information:  
**PKC  $\delta$  (Phospho Ser645) Rabbit pAb**

---

For Research Use Only. Not for Use in Diagnostic Procedures.

[Antibody](#) | [ELISA Kits](#) | [Protein](#) | [Reagents](#)