

## Cortactin (Phospho Tyr466) Rabbit pAb

CatalogNo: YP0846 Orthogonal Validated 

### Key Features

#### Host Species

- Rabbit

#### Reactivity

- Human, Mouse, Rat, Monkey

#### Applications

- WB, IHC, IF, ELISA

#### MW

- 80kD (Observed)

#### Isotype

- IgG

### Storage

**Storage\*** -15°C to -25°C/1 year (Do not lower than -25°C)

**Formulation** Liquid in PBS containing 50% glycerol, 0.5% BSA and 0.02% sodium azide.

### Recommended Dilution Ratios

**WB 1:500-1:2000**

**IHC 1:100-1:300**

**IF 1:200-1:1000**

**ELISA 1:20000**

**Not yet tested in other applications.**

### Basic Information

**Clonality** Polyclonal

### Immunogen Information

**Immunogen** The antiserum was produced against synthesized peptide derived from mouse Cortactin around the phosphorylation site of Tyr466. AA range:441-490

## Specificity

Phospho-Cortactin (Y466) Polyclonal Antibody detects endogenous levels of Cortactin protein only when phosphorylated at Y466. The name of modified sites may be influenced by many factors, such as species (the modified site was not originally found in human samples) and the change of protein sequence (the previous protein sequence is incomplete, and the protein sequence may be prolonged with the development of protein sequencing technology). When naming, we will use the "numbers" in historical reference to keep the sites consistent with the reports. The antibody binds to the following modification sequence (lowercase letters are modification sites):PVyET

## Target Information

**Gene name** CTTN

**Protein Name** Src substrate cortactin

Organism	Gene ID	UniProt ID
Human	<a href="#">13043;</a>	<a href="#">Q14247;</a>
Mouse	<a href="#">13043;</a>	<a href="#">Q60598;</a>

### Cellular Localization

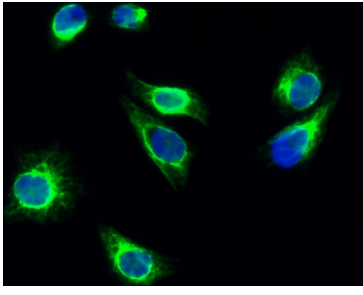
Cytoplasm, cytoskeleton . Cell projection, lamellipodium . Cell projection, ruffle. Cell projection, dendrite . Cell projection . Cell membrane ; Peripheral membrane protein ; Cytoplasmic side . Cell projection, podosome . Cell junction . Cell junction, focal adhesion . Membrane, clathrin-coated pit . Cell projection, dendritic spine . Cytoplasm, cell cortex . Colocalizes transiently with PTK2/FAK1 at focal adhesions (By similarity). Associated with membrane ruffles and lamellipodia. In the presence of CTTNBP2NL, colocalizes with stress fibers (By similarity). In the presence of CTTNBP2, localizes at the cell cortex (By similarity). In response to neuronal activation by glutamate, redistributes from dendritic spines to the dendritic shaft (By similarity). Colocalizes with DNM2 at the basis of filopodia in hippocampus neuron growth zones (By similarity). .

**Tissue specificity** Coronary artery, Epithelium, Mammary gland, Placenta, Platelet, Testis,

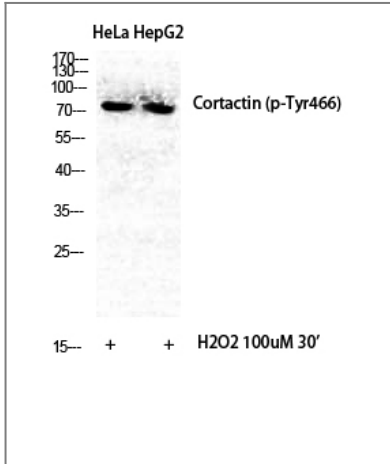
### Function

Function: May contribute to the organization of cell structure. The SH3 motif may function as a binding region to cytoskeleton. Tyrosine phosphorylation in transformed cells may contribute to cellular growth regulation and transformation., online information: Cortactin entry, similarity: Contains 1 SH3 domain., similarity: Contains 7 cortactin repeats., subcellular location: Associated with membrane ruffles and lamellipodia., subunit: Interacts with SHANK2 and SHANK3 via its SH2 domain. Also interacts with FGD1 (By similarity). Interacts with PLXDC2.,

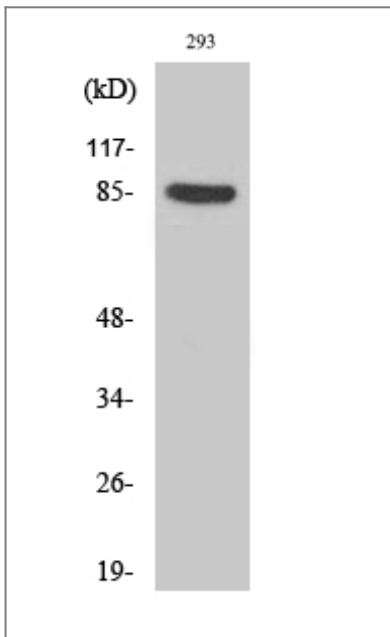
## Validation Data



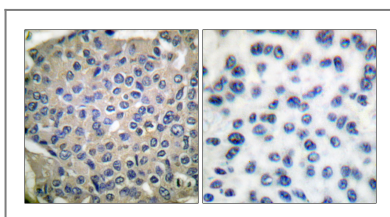
Immunofluorescence analysis of HeLa cell. 1, Cortactin (phospho Tyr466) Polyclonal Antibody (green) was diluted at 1:200 (4° overnight). 2, Goat Anti Rabbit Alexa Fluor 488 Catalog: RS3211 was diluted at 1:1000 (room temperature, 50min). 3 DAPI (blue) 10min.



Western Blot analysis of various cells using Phospho-Cortactin (Y466) Polyclonal Antibody diluted at 1:500



Western Blot analysis of 293 cells using Phospho-Cortactin (Y466) Polyclonal Antibody diluted at 1:500



Immunohistochemistry analysis of paraffin-embedded human breast carcinoma, using Cortactin (Phospho-Tyr466) Antibody. The picture on the right is blocked with the phospho peptide.

## Contact information

Orders: order@immunoway.com  
Support: tech@immunoway.com  
Telephone: 877-594-3616 (Toll Free), 408-747-0185  
Website: http://www.immunoway.com  
Address: 2200 Ringwood Ave San Jose, CA 95131 USA



Please scan the QR code to access additional product information:  
**Cortactin (Phospho Tyr466) Rabbit pAb**

---

For Research Use Only. Not for Use in Diagnostic Procedures.

[Antibody](#) | [ELISA Kits](#) | [Protein](#) | [Reagents](#)