

TOB1 (Phospho Ser164) Rabbit pAb

CatalogNo: YP0835 **Orthogonal Validated** 

Key Features

Host Species

- Rabbit

Reactivity

- Human, Mouse, Rat

Applications

- WB, IHC, IF, ELISA

MW

- 40kD (Observed)

Isotype

- IgG

Storage

Storage* -15°C to -25°C/1 year (Do not lower than -25°C)**Formulation** Liquid in PBS containing 50% glycerol, 0.5% BSA and 0.02% sodium azide.

Recommended Dilution Ratios

WB 1:500-1:2000**IHC 1:100-1:300****ELISA 1:5000****IF 1:50-200**

Basic Information

Clonality Polyclonal

Immunogen Information

Immunogen The antiserum was produced against synthesized peptide derived from human TOB1 around the phosphorylation site of Ser164. AA range: 130-179

Specificity

Phospho-TOB1 (S164) Polyclonal Antibody detects endogenous levels of TOB1 protein only when phosphorylated at S164. The name of modified sites may be influenced by many factors, such as species (the modified site was not originally found in human samples) and the change of protein sequence (the previous protein sequence is incomplete, and the protein sequence may be prolonged with the development of protein sequencing technology). When naming, we will use the "numbers" in historical reference to keep the sites consistent with the reports. The antibody binds to the following modification sequence (lowercase letters are modification sites):AVsPT

Target Information

Gene name TOB1

Protein Name Protein Tob1

Organism	Gene ID	UniProt ID
Human	10140;	P50616;
Mouse		Q61471;
Rat		Q8R5K6;

Cellular Localization

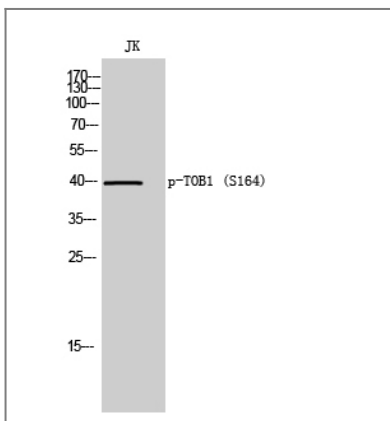
Cytoplasm . Nucleus . Only a small fraction localizes to the cytoplasm except in late S-phase where more than half of proteins become cytoplasmic. .

Tissue specificity Ubiquitous.

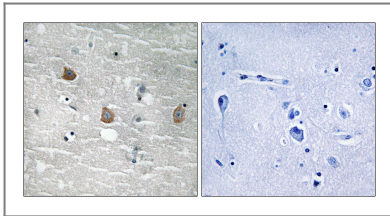
Function

Function:Anti-proliferative protein that interacts with the erbB-2 receptor tyrosine kinase. May physically and/or functionally interact with protein-tyrosine kinase receptors.,PTM:Phosphorylated on Ser and Thr residues.,similarity:Belongs to the BTG family.,subunit:Interacts with CNOT7.,tissue specificity:Ubiquitous.,

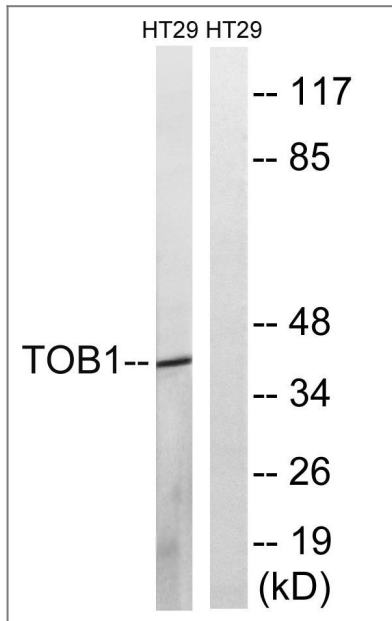
Validation Data



Western Blot analysis of JK cells using Phospho-TOB1 (S164) Polyclonal Antibody



Immunohistochemistry analysis of paraffin-embedded human brain, using TOB1 (Phospho-Ser164) Antibody. The picture on the right is blocked with the phospho peptide.



Western blot analysis of lysates from HT29 cells treated with serum 20% 15', using TOB1 (Phospho-Ser164) Antibody. The lane on the right is blocked with the phospho peptide.

Contact information

Orders: order@immunoway.com
Support: tech@immunoway.com
Telephone: 877-594-3616 (Toll Free), 408-747-0185
Website: <http://www.immunoway.com>
Address: 2200 Ringwood Ave San Jose, CA 95131 USA



Please scan the QR code to access additional product information:
TOB1 (Phospho Ser164) Rabbit pAb

For Research Use Only. Not for Use in Diagnostic Procedures.

[Antibody](#) | [ELISA Kits](#) | [Protein](#) | [Reagents](#)