

TIF-IA (Phospho Ser649) Rabbit pAb

CatalogNo: YP0834 **Orthogonal Validated** 

Key Features

Host Species

- Rabbit

Reactivity

- Human, Mouse, Rat

Applications

- WB, IHC, IF, ELISA

MW

- 70kD (Observed)

Isotype

- IgG

Storage

Storage* -15°C to -25°C/1 year (Do not lower than -25°C)**Formulation** Liquid in PBS containing 50% glycerol, 0.5% BSA and 0.02% sodium azide.

Recommended Dilution Ratios

WB 1:500-1:2000**IHC 1:100-1:300****ELISA 1:10000****IF 1:50-200**

Basic Information

Clonality Polyclonal

Immunogen Information

Immunogen The antiserum was produced against synthesized peptide derived from human TIF-IA around the phosphorylation site of Ser649. AA range:602-651

Specificity

Phospho-Rrn3 (S649) Polyclonal Antibody detects endogenous levels of Rrn3 protein only when phosphorylated at S649. The name of modified sites may be influenced by many factors, such as species (the modified site was not originally found in human samples) and the change of protein sequence (the previous protein sequence is incomplete, and the protein sequence may be prolonged with the development of protein sequencing technology). When naming, we will use the "numbers" in historical reference to keep the sites consistent with the reports. The antibody binds to the following modification sequence (lowercase letters are modification sites):QPSP

Target Information

Gene name RRN3 TIFIA

Protein Name RNA polymerase I-specific transcription initiation factor RRN3

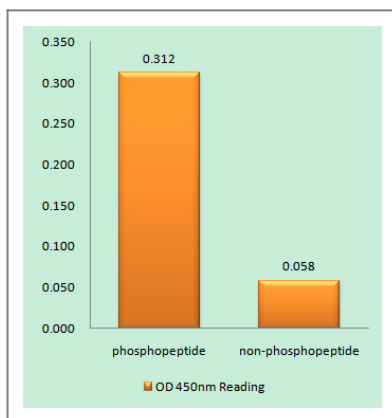
Organism	Gene ID	UniProt ID
Human	54700 ;	Q9NYV6 ;
Mouse	106298 ;	B2RS91 ;

Cellular Localization Nucleus, nucleolus .

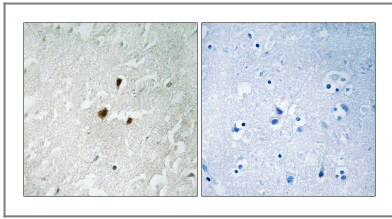
Tissue specificity Hippocampus, Kidney, Pooled, Spleen,

Function Function: Required for efficient transcription initiation by RNA polymerase I., similarity: Belongs to the RRN3 family.,

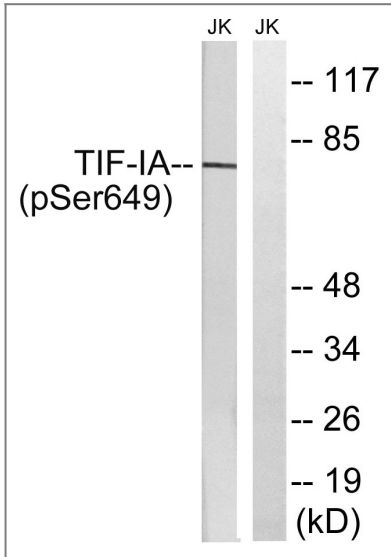
Validation Data



Enzyme-Linked Immunosorbent Assay (Phospho-ELISA) for Immunogen Phosphopeptide (Phospho-left) and Non-Phosphopeptide (Phospho-right), using TIF-IA (Phospho-Ser649) Antibody



Immunohistochemistry analysis of paraffin-embedded human brain, using TIF-IA (Phospho-Ser649) Antibody. The picture on the right is blocked with the phospho peptide.



Western blot analysis of lysates from Jurkat cells treated with starved 24h, using TIF-IA (Phospho-Ser649) Antibody. The lane on the right is blocked with the phospho peptide.

Contact information

Orders: order@immunoway.com
Support: tech@immunoway.com
Telephone: 877-594-3616 (Toll Free), 408-747-0185
Website: <http://www.immunoway.com>
Address: 2200 Ringwood Ave San Jose, CA 95131 USA



Please scan the QR code to access additional product information:
TIF-IA (Phospho Ser649) Rabbit pAb

For Research Use Only. Not for Use in Diagnostic Procedures.

[Antibody](#) | [ELISA Kits](#) | [Protein](#) | [Reagents](#)