

Ribosomal Protein S6 (Phospho Ser235/236) Rabbit pAb

CatalogNo: YP0832 **Orthogonal Validated** 

Key Features

Host Species

- Rabbit

Reactivity

- Human, Mouse, Rat

Applications

- WB, IHC, IF, ELISA

MW

- 30kD (Observed)

Isotype

- IgG

Storage

Storage* -15°C to -25°C/1 year (Do not lower than -25°C)**Formulation** Liquid in PBS containing 50% glycerol, 0.5% BSA and 0.02% sodium azide.

Recommended Dilution Ratios

WB 1:500-1:2000**IHC 1:100-1:300****ELISA 1:5000****IF 1:50-200**

Basic Information

Clonality Polyclonal

Immunogen Information

Immunogen The antiserum was produced against synthesized peptide derived from human S6 Ribosomal Protein around the phosphorylation site of Ser235 and Ser236. AA range: 200-249

Specificity

This antibody detects endogenous levels of Ribosomal Protein S6 only when phosphorylated at Ser235 or Ser236, and dually phosphorylated at two sites. The name of modified sites may be influenced by many factors, such as species (the modified site was not originally found in human samples) and the change of protein sequence (the previous protein sequence is incomplete, and the protein sequence may be prolonged with the development of protein sequencing technology). When naming, we will use the "numbers" in historical reference to keep the sites consistent with the reports. The antibody binds to the following modification sequence (lowercase letters are modification sites):LssLR

Target Information

Gene name RPS6

Protein Name 40S ribosomal protein S6

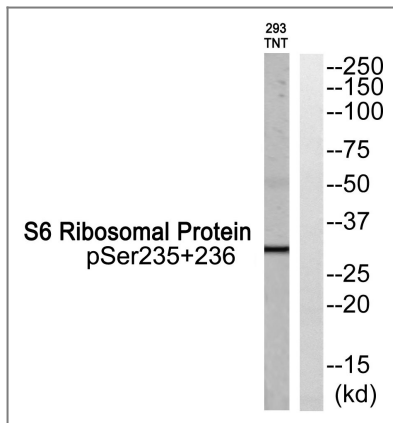
Organism	Gene ID	UniProt ID
Human	6194 ;	P62753 ;
Mouse	20104 ;	P62754 ;
Rat	29304 ;	P62755 ;

Cellular Localization nucleus, nucleoplasm, nucleolus, cytoplasm, cytosol, ribosome, polysome, small ribosomal subunit, membrane, cytosolic small ribosomal subunit, dendrite, intracellular ribonucleoprotein complex, cytoplasmic ribonucleoprotein granu

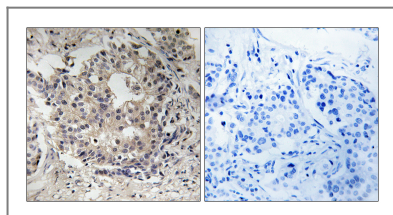
Tissue specificity Brain, Colon, Colon adenocarcinoma, Epithelium, Muscle, Ovary, Pancreas, Placenta, Skin, Tes

Function Function: May play an important role in controlling cell growth and proliferation through the selective translation of particular classes of mRNA. PTM: Ribosomal protein S6 is the major substrate of protein kinases in eukaryote ribosomes. The phosphorylation is stimulated by growth factors, tumor promoting agents, and mitogens. It is dephosphorylated at growth arrest. Similarity: Belongs to the ribosomal protein S6e family.

Validation Data



Western blot analysis of S6 Ribosomal Protein (Phospho-Ser235+Ser236) Antibody. The lane on the right is blocked with the S6 Ribosomal Protein (Phospho-Ser235+Ser236) peptide.



Immunohistochemistry analysis of paraffin-embedded human breast cancer, using S6 Ribosomal Protein (Phospho-Ser235+Ser236) Antibody. The picture on the right is blocked with the S6 Ribosomal Protein (Phospho-Ser235+Ser236) peptide.

Contact information

Orders: order@immunoway.com
 Support: tech@immunoway.com
 Telephone: 877-594-3616 (Toll Free), 408-747-0185
 Website: <http://www.immunoway.com>
 Address: 2200 Ringwood Ave San Jose, CA 95131 USA



Please scan the QR code to access additional product information:
Ribosomal Protein S6 (Phospho Ser235/236) Rabbit pAb

For Research Use Only. Not for Use in Diagnostic Procedures.

[Antibody](#) | [ELISA Kits](#) | [Protein](#) | [Reagents](#)