

## IPP-2 (Phospho Ser44) Rabbit pAb

CatalogNo: YP0830

### Key Features

#### Host Species

- Rabbit

#### Reactivity

- Human, Mouse, Rat

#### Applications

- WB, IHC, IF, ELISA

#### MW

- 44kD (Observed)

#### Isotype

- IgG

### Storage

**Storage\*** -15°C to -25°C/1 year (Do not lower than -25°C)

**Formulation** Liquid in PBS containing 50% glycerol, 0.5% BSA and 0.02% sodium azide.

### Recommended Dilution Ratios

**WB 1:500-1:2000**

**IHC 1:100-1:300**

**ELISA 1:40000**

**IF 1:50-200**

### Basic Information

**Clonality** Polyclonal

### Immunogen Information

**Immunogen** Synthesized phospho-peptide around the phosphorylation site of human IPP-2 (phospho Ser44)

**Specificity** Phospho-IPP-2 (S44) Polyclonal Antibody detects endogenous levels of IPP-2 protein only when phosphorylated at S44. The name of modified sites may be influenced by many factors, such as species (the modified site was not originally found in human samples) and the change of protein sequence (the previous protein sequence is incomplete, and the protein sequence may be prolonged with the development of protein sequencing technology). When naming, we will use the "numbers" in historical reference to keep the sites consistent with the reports. The antibody binds to the following modification sequence (lowercase letters are modification sites): KKsQK

## Target Information

**Gene name** PPP1R2

**Protein Name** Protein phosphatase inhibitor 2

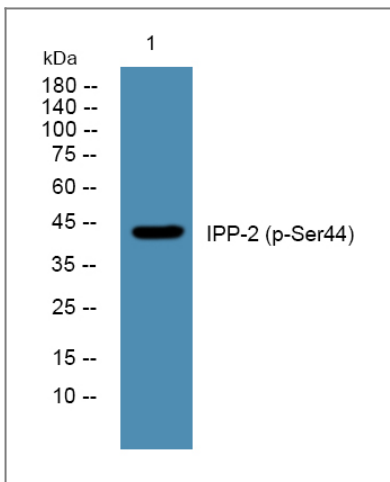
Organism	Gene ID	UniProt ID
Human	<a href="#">5504;</a>	<a href="#">P41236;</a>
Mouse	<a href="#">66849;</a>	<a href="#">Q9DCL8;</a>
Rat	<a href="#">192361;</a>	<a href="#">P50411;</a>

**Cellular Localization** protein phosphatase type 1 complex,

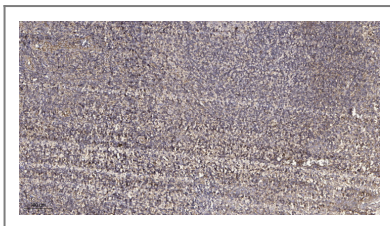
**Tissue specificity** Epithelium,Heart,Platelet,Skin,Testis,

**Function** Function:Inhibitor of protein-phosphatase 1.,PTM:Phosphorylation on Thr-73 by GSK3 activates PP1 by dissociating the PP1-PPP1R2 complex (By similarity). Phosphorylation on Ser-44 by ATM activates PP1 by dissociating the PP1-PPP1R2 complex.,similarity:Belongs to the protein phosphatase inhibitor 2 family.,subunit:Heterodimer with PP1.,

## Validation Data



Western blot analysis of lysates from K562 cells, primary antibody was diluted at 1:1000, 4° over night



Immunohistochemical analysis of paraffin-embedded human tonsil. 1, Antibody was diluted at 1:200(4° overnight). 2, Tris-EDTA,pH9.0 was used for antigen retrieval. 3,Secondary antibody was diluted at 1:200(room temperature, 30min).

## Contact information

Orders: order@immunoway.com  
Support: tech@immunoway.com  
Telephone: 877-594-3616 (Toll Free), 408-747-0185  
Website: http://www.immunoway.com  
Address: 2200 Ringwood Ave San Jose, CA 95131 USA



Please scan the QR code  
to access additional  
product information:  
**IPP-2 (Phospho  
Ser44) Rabbit pAb**

---

For Research Use Only. Not for Use in Diagnostic Procedures.

[Antibody](#) | [ELISA Kits](#) | [Protein](#) | [Reagents](#)