

## Gab2 (Phospho Tyr643) Rabbit pAb

CatalogNo: YP0817 **Orthogonal Validated** 

### Key Features

#### Host Species

- Rabbit

#### Reactivity

- Human, Mouse, Rat

#### Applications

- WB, IHC, IF, ELISA

#### MW

- 74kD (Observed)

#### Isotype

- IgG

### Storage

**Storage\*** -15°C to -25°C/1 year (Do not lower than -25°C)**Formulation** Liquid in PBS containing 50% glycerol, 0.5% BSA and 0.02% sodium azide.

### Recommended Dilution Ratios

**WB 1:500-1:2000****IHC 1:100-1:300****ELISA 1:40000****IF 1:50-200**

### Basic Information

**Clonality** Polyclonal

### Immunogen Information

**Immunogen** The antiserum was produced against synthesized peptide derived from human Gab2 around the phosphorylation site of Tyr643. AA range: 609-658

## Specificity

Phospho-Gab 2 (Y643) Polyclonal Antibody detects endogenous levels of Gab 2 protein only when phosphorylated at Y643. The name of modified sites may be influenced by many factors, such as species (the modified site was not originally found in human samples) and the change of protein sequence (the previous protein sequence is incomplete, and the protein sequence may be prolonged with the development of protein sequencing technology). When naming, we will use the "numbers" in historical reference to keep the sites consistent with the reports. The antibody binds to the following modification sequence (lowercase letters are modification sites):VDyVQ

## Target Information

**Gene name** GAB2

**Protein Name** GRB2-associated-binding protein 2

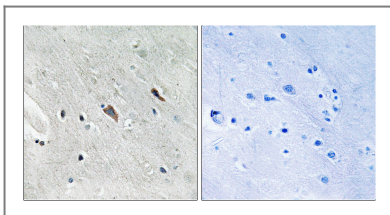
Organism	Gene ID	UniProt ID
Human	<a href="#">9846;</a>	<a href="#">Q9UQC2;</a>
Mouse		<a href="#">Q9Z1S8;</a>
Rat	<a href="#">84477;</a>	<a href="#">Q9EQH1;</a>

**Cellular Localization** Cytoplasm . Cell membrane .

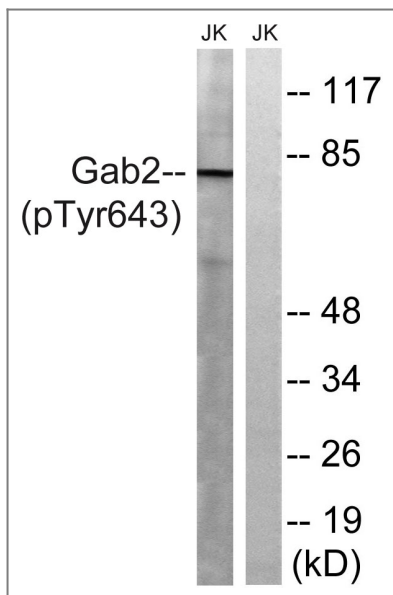
**Tissue specificity** Brain, Clones donated by Kazusa DNA Research Inst.,

**Function** PTM:Dephosphorylated by PTPN11.,PTM:Phosphorylated on tyrosine residue(s) by the thrombopoietin receptor (TPOR), stem cell factor receptor (SCFR), and T-cell and B-cell antigen receptors, gp130, IL-2R and IL-3R.,similarity:Belongs to the GAB family.,similarity:Contains 1 PH domain.,subunit:Interacts with GRB2, PI-3 kinase and with other SH2-containing proteins.,

## Validation Data



Immunohistochemistry analysis of paraffin-embedded human brain, using Gab2 (Phospho-Tyr643) Antibody. The picture on the right is blocked with the phospho peptide.



Western blot analysis of lysates from Jurkat cells treated with IFN 2500U/ML 30', using Gab2 (Phospho-Tyr643) Antibody. The lane on the right is blocked with the phospho peptide.

## Contact information

Orders: [order@immunoway.com](mailto:order@immunoway.com)  
Support: [tech@immunoway.com](mailto:tech@immunoway.com)  
Telephone: 877-594-3616 (Toll Free), 408-747-0185  
Website: <http://www.immunoway.com>  
Address: 2200 Ringwood Ave San Jose, CA 95131 USA



Please scan the QR code to access additional product information:  
**Gab2 (Phospho Tyr643) Rabbit pAb**

For Research Use Only. Not for Use in Diagnostic Procedures.

[Antibody](#) | [ELISA Kits](#) | [Protein](#) | [Reagents](#)