

## CtBP1 (Phospho Ser422) Rabbit pAb

CatalogNo: YP0815 **Orthogonal Validated** 

### Key Features

#### Host Species

- Rabbit

#### Reactivity

- Human, Mouse, Rat

#### Applications

- WB, IHC, IF, ELISA

#### MW

- 48kD (Observed)

#### Isotype

- IgG

### Storage

**Storage\*** -15°C to -25°C/1 year (Do not lower than -25°C)**Formulation** Liquid in PBS containing 50% glycerol, 0.5% BSA and 0.02% sodium azide.

### Recommended Dilution Ratios

**WB 1:500-1:2000****IHC 1:100-1:300****ELISA 1:10000****IF 1:50-200**

### Basic Information

**Clonality** Polyclonal

### Immunogen Information

**Immunogen** The antiserum was produced against synthesized peptide derived from human CtBP1 around the phosphorylation site of Ser422. AA range: 388-437

## Specificity

Phospho-CtBP1 (S422) Polyclonal Antibody detects endogenous levels of CtBP1 protein only when phosphorylated at S422. The name of modified sites may be influenced by many factors, such as species (the modified site was not originally found in human samples) and the change of protein sequence (the previous protein sequence is incomplete, and the protein sequence may be prolonged with the development of protein sequencing technology). When naming, we will use the "numbers" in historical reference to keep the sites consistent with the reports. The antibody binds to the following modification sequence (lowercase letters are modification sites):APSPG

## Target Information

**Gene name** CTBP1

**Protein Name** C-terminal-binding protein 1

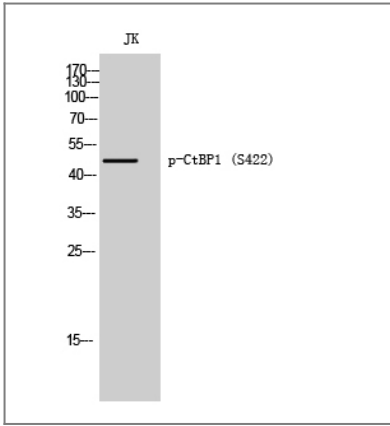
Organism	Gene ID	UniProt ID
Human	<a href="#">1487;</a>	<a href="#">Q13363;</a>
Mouse	<a href="#">13016;</a>	<a href="#">O88712;</a>
Rat	<a href="#">29382;</a>	<a href="#">Q9Z2F5;</a>

**Cellular Localization** Cytoplasm . Nucleus .

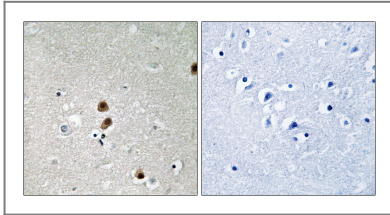
**Tissue specificity** Expressed in germinal center B-cells.

**Function** cofactor:NAD. Required for efficient interaction with E1A. Cofactor binding induces a conformation change.,Function:Involved in controlling the equilibrium between tubular and stacked structures in the Golgi complex (By similarity). Co-repressor targeting diverse transcription regulators such as GLIS2. Has dehydrogenase activity.,PTM:ADP-ribosylated; when cells are exposed to brefeldin-A (BFA).,PTM:Sumoylation on Lys-428 is promoted by the E3 SUMO-protein ligase CBX4.,PTM:The level of phosphorylation appears to be regulated during the cell cycle. Phosphorylated upon DNA damage, probably by ATM or ATR. Phosphorylation by HIPK2 on Ser-422 induces proteasomal degradation.,similarity:Belongs to the D-isomer specific 2-hydroxyacid dehydrogenase family.,subunit:Interacts with the C-terminus of adenovirus E1A protein, ELK3 and CTIP via their consensus motif P-X-[DNS]-L-[STVA]. Can form homodimers or heterodimers of CTBP1 and CTBP2. Interacts with FOXP2, HDAC4, HDAC5 and HDAC9. Interacts with GLIS2 but not GLIS1 or GLIS3 (By similarity). Interacts with FOXP1, HIPK2, PNN and NRIP1. Interacts with ZFHX1B and WIZ. Interacts with Epstein-Barr virus EBNA3 and EBNA6.,

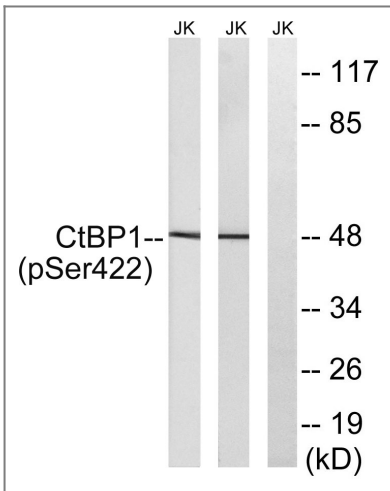
## Validation Data



Western Blot analysis of JK cells using Phospho-CtBP1 (S422) Polyclonal Antibody



Immunohistochemistry analysis of paraffin-embedded human brain, using CtBP1 (Phospho-Ser422) Antibody. The picture on the right is blocked with the phospho peptide.



Western blot analysis of lysates from Jurkat cells treated with TNF 20ng/ml 30' and Jurkat cells treated with UV 15', using CtBP1 (Phospho-Ser422) Antibody. The lane on the right is blocked with the phospho peptide.

## Contact information

Orders: [order@immunoway.com](mailto:order@immunoway.com)  
 Support: [tech@immunoway.com](mailto:tech@immunoway.com)  
 Telephone: 877-594-3616 (Toll Free), 408-747-0185  
 Website: <http://www.immunoway.com>  
 Address: 2200 Ringwood Ave San Jose, CA 95131 USA



Please scan the QR code to access additional product information:  
**CtBP1 (Phospho Ser422) Rabbit pAb**