

## WWOX (Phospho Tyr33) Rabbit pAb

CatalogNo: YP0811 **Orthogonal Validated** 

### Key Features

#### Host Species

- Rabbit

#### Reactivity

- Human, Mouse

#### Applications

- WB, IHC, IF, ELISA

#### MW

- 55kD (Observed)

#### Isotype

- IgG

### Storage

**Storage\*** -15°C to -25°C/1 year (Do not lower than -25°C)**Formulation** Liquid in PBS containing 50% glycerol, 0.5% BSA and 0.02% sodium azide.

### Recommended Dilution Ratios

**WB 1:500-1:2000****IHC 1:100-1:300****ELISA 1:10000****IF 1:50-200**

### Basic Information

**Clonality** Polyclonal

### Immunogen Information

**Immunogen** The antiserum was produced against synthesized peptide derived from human WWOX around the phosphorylation site of Tyr33. AA range:18-67

## Specificity

Phospho-WWOX (Y33) Polyclonal Antibody detects endogenous levels of WWOX protein only when phosphorylated at Y33. The name of modified sites may be influenced by many factors, such as species (the modified site was not originally found in human samples) and the change of protein sequence (the previous protein sequence is incomplete, and the protein sequence may be prolonged with the development of protein sequencing technology). When naming, we will use the "numbers" in historical reference to keep the sites consistent with the reports. The antibody binds to the following modification sequence (lowercase letters are modification sites):WVYyYA

## Target Information

**Gene name** WWOX

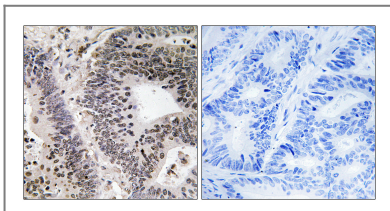
**Protein Name** WW domain-containing oxidoreductase

Organism	Gene ID	UniProt ID
Human	<a href="#">51741</a> ;	<a href="#">Q96KM3</a> ;

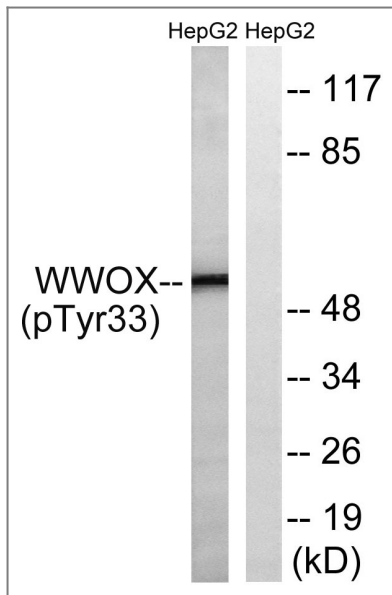
## Function

Disease:Defects in WWOX may be involved in esophageal squamous cell carcinoma (ESCC) [MIM:133239].,Disease:Defects in WWOX may be involved in several cancer types. The gene spans the second most common chromosomal fragile site (FRA16D) which is frequently altered in cancers. Alteration of the expression and expression of some isoforms is associated with cancers. However, it is still unclear if alteration of WWOX is directly implicated in cancerogenesis or if it corresponds to a secondary effect.,Domain:The WW 1 domain mediates interaction with TP53, and probably TP73, TFAP2C, LITAF and WBP1.,Function:Probable oxidoreductase, which acts as a tumor suppressor and plays a role in apoptosis. May function synergistically with TP53/p53 to control genotoxic stress-induced cell death. May also play a role in tumor necrosis factor (TNF)-mediated cell death.,PTM:Phosphorylated upon genotoxic stress. Phosphorylation of Tyr-33 regulates interaction with TP53, TP73 and MAPK8. May also regulate proapoptotic activity.,similarity:Belongs to the short-chain dehydrogenases/reductases (SDR) family.,similarity:Contains 2 WW domains.,subcellular location:Partially localizes to the mitochondria. Translocates to the nucleus upon genotoxic stress or TNF stimulation (By similarity). Isoform 5 and isoform 6 may localize in the nucleus.,subunit:Interacts with TP53, TP73/p73 and MAPK8. Interacts with MAPT/TAU (By similarity). Forms a ternary complex with TP53 and MDM2. Interacts with ERBB4, LITAF and WBP1. May interact with COTE1/C1orf2 and SCOTIN.,tissue specificity:Widely expressed. Strongly expressed in testis, prostate, and ovary. Overexpressed in cancer cell lines. Isoform 5 and isoform 6 may only be expressed in tumor cell lines.,

## Validation Data



Immunohistochemistry analysis of paraffin-embedded human colon carcinoma, using WWOX (Phospho-Tyr33) Antibody. The picture on the right is blocked with the phospho peptide.



Western blot analysis of lysates from HepG2 cells treated with PMA 125ng/ml 30', using WWOX (Phospho-Tyr33) Antibody. The lane on the right is blocked with the phospho peptide.

## Contact information

Orders: [order@immunoway.com](mailto:order@immunoway.com)  
Support: [tech@immunoway.com](mailto:tech@immunoway.com)  
Telephone: 877-594-3616 (Toll Free), 408-747-0185  
Website: <http://www.immunoway.com>  
Address: 2200 Ringwood Ave San Jose, CA 95131 USA



Please scan the QR code to access additional product information:  
**WWOX (Phospho Tyr33) Rabbit pAb**

For Research Use Only. Not for Use in Diagnostic Procedures.

[Antibody](#) | [ELISA Kits](#) | [Protein](#) | [Reagents](#)