

Trk C (Phospho Tyr516) Rabbit pAb

CatalogNo: YP0800 **Orthogonal Validated** 

Key Features

Host Species

- Rabbit

Reactivity

- Human, Mouse, Rat

Applications

- WB, IHC, IF, ELISA

MW

- 160kD (Observed)

Isotype

- IgG

Storage

Storage* -15°C to -25°C/1 year (Do not lower than -25°C)**Formulation** Liquid in PBS containing 50% glycerol, 0.5% BSA and 0.02% sodium azide.

Recommended Dilution Ratios

WB 1:500-1:2000**IHC 1:100-1:300****ELISA 1:10000****IF 1:50-200**

Basic Information

Clonality Polyclonal

Immunogen Information

Immunogen The antiserum was produced against synthesized peptide derived from human Trk C around the phosphorylation site of Tyr516. AA range:482-531

Specificity

Phospho-Trk C (Y516) Polyclonal Antibody detects endogenous levels of Trk C protein only when phosphorylated at Y516. The name of modified sites may be influenced by many factors, such as species (the modified site was not originally found in human samples) and the change of protein sequence (the previous protein sequence is incomplete, and the protein sequence may be prolonged with the development of protein sequencing technology). When naming, we will use the "numbers" in historical reference to keep the sites consistent with the reports. The antibody binds to the following modification sequence (lowercase letters are modification sites):PQyFR

Target Information

Gene name NTRK3

Protein Name NT-3 growth factor receptor

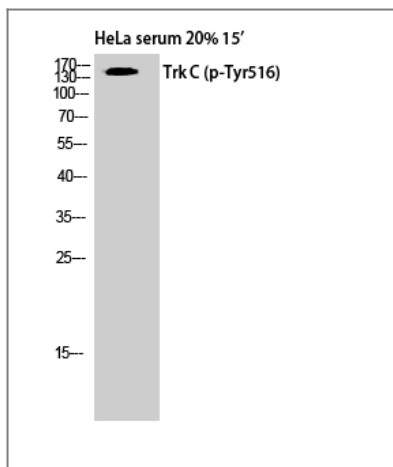
| Organism | Gene ID | UniProt ID |
|----------|------------------------|-------------------------|
| Human | 4916; | Q16288; |
| Mouse | 18213; | Q6VNS1; |
| Rat | 29613; | Q03351; |

Cellular Localization Membrane; Single-pass type I membrane protein.

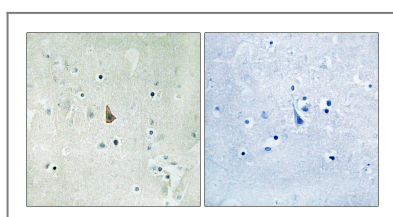
Tissue specificity Widely expressed but mainly in nervous tissue. Isoform 2 is expressed at higher levels in adult brain than in fetal brain.

Function Alternative products:Additional isoforms seem to exist,Catalytic activity:ATP + a [protein]-L-tyrosine = ADP + a [protein]-L-tyrosine phosphate.,Function:Receptor for neurotrophin-3 (NT-3). This is a tyrosine-protein kinase receptor. Known substrates for the trk receptors are SHC1, PI-3 kinase, and PLCG1. The different isoforms do not have identical signaling properties.,PTM:Ligand-mediated auto-phosphorylation.,similarity:Belongs to the protein kinase superfamily. Tyr protein kinase family. Insulin receptor subfamily.,similarity:Contains 1 protein kinase domain.,similarity:Contains 2 Ig-like C2-type (immunoglobulin-like) domains.,similarity:Contains 2 LRR (leucine-rich) repeats.,subunit:Exists in a dynamic equilibrium between monomeric (low affinity) and dimeric (high affinity) structures. Binds SH2B2. Interacts with SQSTM1 and KIDINS220.,tissue specificity:Widely expressed but mainly in nervous tissue. Isoform B is expressed at higher levels in adult brain than in fetal brain.,

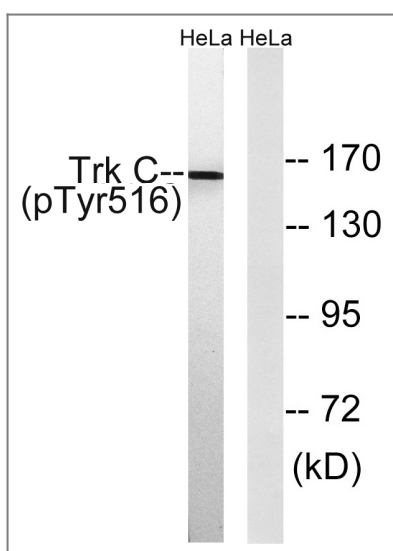
Validation Data



Western Blot analysis of HELA cells using Phospho-Trk C (Y516) Polyclonal Antibody



Immunohistochemistry analysis of paraffin-embedded human brain, using Trk C (Phospho-Tyr516) Antibody. The picture on the right is blocked with the phospho peptide.



Western blot analysis of lysates from HeLa cells treated with serum 20% 15', using Trk C (Phospho-Tyr516) Antibody. The lane on the right is blocked with the phospho peptide.

Contact information

Orders: order@immunoway.com
 Support: tech@immunoway.com
 Telephone: 877-594-3616 (Toll Free), 408-747-0185
 Website: <http://www.immunoway.com>
 Address: 2200 Ringwood Ave San Jose, CA 95131 USA



Please scan the QR code to access additional product information:
Trk C (Phospho Tyr516) Rabbit pAb