

RIP2 (Phospho Ser176) Rabbit pAb

CatalogNo: YP0797

Orthogonal Validated 

Key Features

Host Species

- Rabbit

Reactivity

- Human, Mouse

Applications

- WB, IHC, IF, ELISA

MW

- 70kD (Observed)

Isotype

- IgG

Recommended Dilution Ratios

WB 1:500-1:2000**IHC 1:100-1:300****ELISA 1:40000****IF 1:50-200**

Storage

Storage* -15°C to -25°C/1 year (Do not lower than -25°C)**Formulation** Liquid in PBS containing 50% glycerol, 0.5% BSA and 0.02% sodium azide.

Basic Information

Clonality Polyclonal

Immunogen Information

Immunogen The antiserum was produced against synthesized peptide derived from human RIPK2 around the phosphorylation site of Ser176. AA range: 146-195

Specificity Phospho-RIP2 (S176) Polyclonal Antibody detects endogenous levels of RIP2 protein only when phosphorylated at S176. The name of modified sites may be influenced by many factors, such as species (the modified site was not originally found in human samples) and the change of protein sequence (the previous protein sequence is incomplete, and the protein sequence may be prolonged with the development of protein sequencing technology). When naming, we will use the "numbers" in historical reference to keep the sites consistent with the reports. The antibody binds to the following modification sequence (lowercase letters are modification sites):SLsQS

Target Information

Gene name RIPK2 CARDIAK RICK RIP2 UNQ277/PRO314/PRO34092

Protein Name Receptor-interacting serine/threonine-protein kinase 2

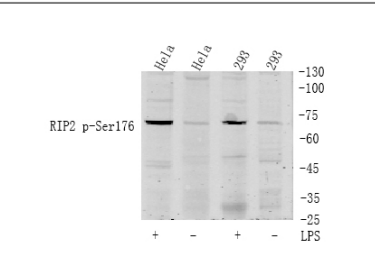
Organism	Gene ID	UniProt ID
Human	8767 ;	O43353 ;
Mouse	192656 ;	P58801 ;

Cellular Localization Cytoplasm .

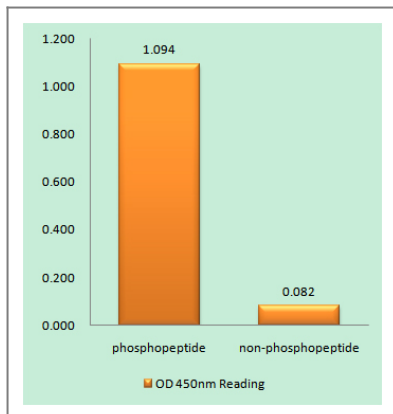
Tissue specificity Detected in heart, brain, placenta, lung, peripheral blood leukocytes, spleen, kidney, testis, prostate, pancreas and lymph node.

Function Catalytic activity:ATP + a protein = ADP + a phosphoprotein.,Function:Activates pro-caspase-1 and pro-caspase-8. Potentiates CASP8-mediated apoptosis. Activates NF-kappa-B.,PTM:Autophosphorylated. Phosphorylated upon DNA damage, probably by ATM or ATR.,similarity:Belongs to the protein kinase superfamily. TKL Ser/Thr protein kinase family.,similarity:Contains 1 CARD domain.,similarity:Contains 1 protein kinase domain.,subunit:Binds to CFLAR/CLARP and CASP1 via their CARD domains. Binds to BIRC3/c-IAP1 and BIRC2/c-IAP2, TRAF1, TRAF2, TRAF5 and TRAF6. May be a component of both the TNFRSF1A and TNFRSF5/CD40 receptor complex.,tissue specificity:Detected in heart, brain, placenta, lung, peripheral blood leukocytes, spleen, kidney, testis, prostate, pancreas and lymph node.,

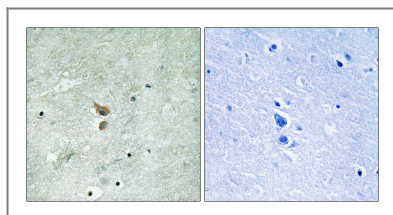
Validation Data



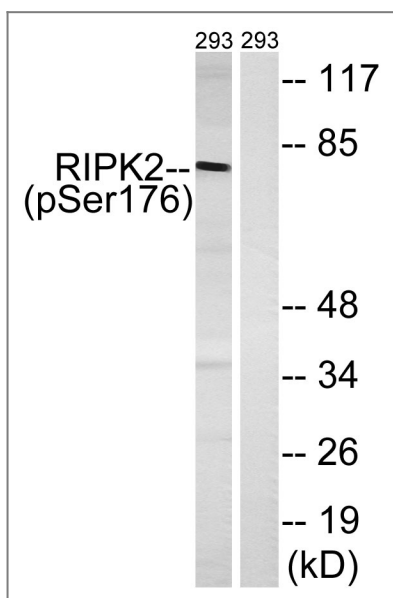
Western Blot analysis of cell lysis treated or untreated by LPS 100ng/mL 30min, using primary antibody at 1:1000 dilution. Secondary antibody(catalog#:RS23920) was diluted at 1:10000



Enzyme-Linked Immunosorbent Assay (Phospho-ELISA) for Immunogen Phosphopeptide (Phospho-left) and Non-Phosphopeptide (Phospho-right), using RIPK2 (Phospho-Ser176) Antibody



Immunohistochemistry analysis of paraffin-embedded human brain, using RIPK2 (Phospho-Ser176) Antibody. The picture on the right is blocked with the phospho peptide.



Western blot analysis of lysates from 293 cells treated with UV 15', using RIPK2 (Phospho-Ser176) Antibody. The lane on the right is blocked with the phospho peptide.

Contact information

Orders: order@immunoway.com
 Support: tech@immunoway.com
 Telephone: 877-594-3616 (Toll Free), 408-747-0185
 Website: <http://www.immunoway.com>
 Address: 2200 Ringwood Ave San Jose, CA 95131 USA



Please scan the QR code to access additional product information:
RIP2 (Phospho Ser176) Rabbit pAb