

OXSRI (Phospho Thr185) Rabbit pAb

CatalogNo: YP0793 **Orthogonal Validated** 

Key Features

Host Species

- Rabbit

Reactivity

- Human, Mouse

Applications

- WB, IHC, IF, ELISA

MW

- 65kD (Observed)

Isotype

- IgG

Storage

Storage* -15°C to -25°C/1 year (Do not lower than -25°C)**Formulation** Liquid in PBS containing 50% glycerol, 0.5% BSA and 0.02% sodium azide.

Recommended Dilution Ratios

WB 1:500-1:2000**IHC 1:100-1:300****ELISA 1:10000****IF 1:50-200**

Basic Information

Clonality Polyclonal

Immunogen Information

Immunogen The antiserum was produced against synthesized peptide derived from human OSR1 around the phosphorylation site of Thr185. AA range:151-200

Specificity

Phospho-OSR1 (T185) Polyclonal Antibody detects endogenous levels of OSR1 protein only when phosphorylated at T185. The name of modified sites may be influenced by many factors, such as species (the modified site was not originally found in human samples) and the change of protein sequence (the previous protein sequence is incomplete, and the protein sequence may be prolonged with the development of protein sequencing technology). When naming, we will use the "numbers" in historical reference to keep the sites consistent with the reports. The antibody binds to the following modification sequence (lowercase letters are modification sites):RKtFV

Target Information

Gene name OXSR1

Protein Name Serine/threonine-protein kinase OSR1

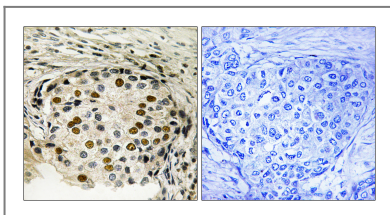
Organism	Gene ID	UniProt ID
Human	9943 ;	O95747 ;
Mouse	108737 ;	Q6P9R2 ;

Cellular Localization Cytoplasm .

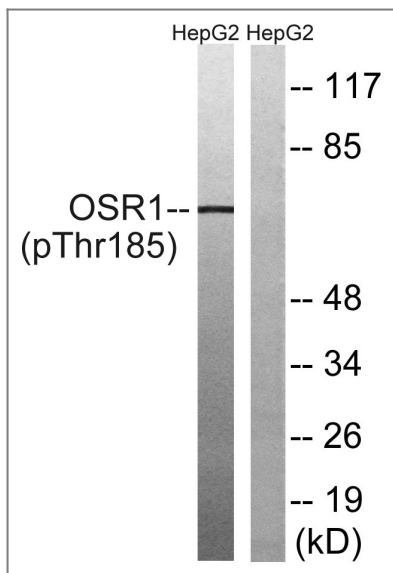
Tissue specificity Ubiquitously expressed in all tissue examined.

Function Catalytic activity:ATP + a protein = ADP + a phosphoprotein.,cofactor:Magnesium.,enzyme regulation:By autophosphorylation on threonine.,Function:Regulates downstream kinases in response to environmental stress. May also have a function in regulating the actin cytoskeleton.,PTM:Phosphorylated upon DNA damage, probably by ATM or ATR.,similarity:Belongs to the protein kinase superfamily. STE Ser/Thr protein kinase family. STE20 subfamily.,similarity:Contains 1 protein kinase domain.,subunit:Binds to and phosphorylates PAK1. Interacts with chloride channel proteins SLC12A6 isoform 2, SLC12A1 and SLC12A2 but not with SLC12A4 and SLC12A7, possibly establishing sensor/signaling modules that initiate the cellular response to environmental stress. Binds to and phosphorylates RELL1, RELL2 AND RELT.,tissue specificity:Ubiquitously expressed in all tissue examined.,

Validation Data



Immunohistochemistry analysis of paraffin-embedded human breast carcinoma, using OSR1 (Phospho-Thr185) Antibody. The picture on the right is blocked with the phospho peptide.



Western blot analysis of lysates from HepG2 cells treated with serum 20% 15', using OSR1 (Phospho-Thr185) Antibody. The lane on the right is blocked with the phospho peptide.

Contact information

Orders: order@immunoway.com
Support: tech@immunoway.com
Telephone: 877-594-3616 (Toll Free), 408-747-0185
Website: <http://www.immunoway.com>
Address: 2200 Ringwood Ave San Jose, CA 95131 USA



Please scan the QR code to access additional product information:
OSR1 (Phospho Thr185) Rabbit pAb

For Research Use Only. Not for Use in Diagnostic Procedures.

[Antibody](#) | [ELISA Kits](#) | [Protein](#) | [Reagents](#)