

Axl (Phospho Tyr691) Rabbit pAb

CatalogNo: YP0779 **Orthogonal Validated** 

Key Features

Host Species

- Rabbit

Reactivity

- Human, Mouse, Rat

Applications

- WB, IHC, IF, ELISA

MW

- 130kD (Observed)

Isotype

- IgG

Storage

Storage* -15°C to -25°C/1 year (Do not lower than -25°C)**Formulation** Liquid in PBS containing 50% glycerol, 0.5% BSA and 0.02% sodium azide.

Recommended Dilution Ratios

WB 1:500-1:2000**IHC 1:100-1:300****ELISA 1:20000****IF 1:50-200**

Basic Information

Clonality Polyclonal

Immunogen Information

Immunogen The antiserum was produced against synthesized peptide derived from human AXL around the phosphorylation site of Tyr691. AA range: 657-706

Specificity

Phospho-Axl (Y691) Polyclonal Antibody detects endogenous levels of Axl protein only when phosphorylated at Y691. The name of modified sites may be influenced by many factors, such as species (the modified site was not originally found in human samples) and the change of protein sequence (the previous protein sequence is incomplete, and the protein sequence may be prolonged with the development of protein sequencing technology). When naming, we will use the "numbers" in historical reference to keep the sites consistent with the reports. The antibody binds to the following modification sequence (lowercase letters are modification sites):KlyNG

| Target Information

Gene name AXL UFO

Protein Name Tyrosine-protein kinase receptor UFO

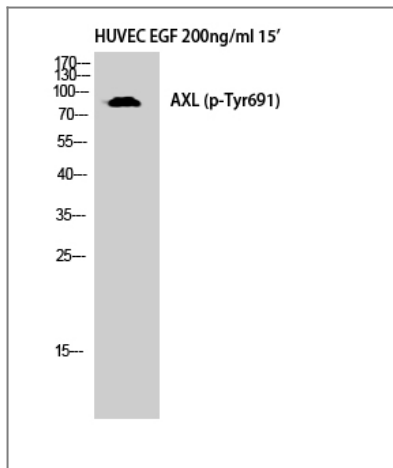
Organism	Gene ID	UniProt ID
Human	558;	P30530;
Mouse	26362;	Q00993;

Cellular Localization Cell membrane ; Single-pass type I membrane protein .

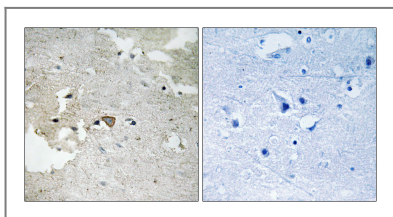
Tissue specificity Highly expressed in metastatic colon tumors. Expressed in primary colon tumors. Weakly expressed in normal colon tissue.

Function Catalytic activity:ATP + a [protein]-L-tyrosine = ADP + a [protein]-L-tyrosine phosphate.,Disease:Has transforming potential in patients with chronic myeloproliferative disorder or chronic myelocytic leukemia.,Function:May function as a signal transducer between specific cell types of mesodermal origin. In case of filovirus infection, seems to function as a cell entry factor.,similarity:Belongs to the protein kinase superfamily. Tyr protein kinase family. AXL/UFO subfamily.,similarity:Contains 1 protein kinase domain.,similarity:Contains 2 fibronectin type-III domains.,similarity:Contains 2 Ig-like C2-type (immunoglobulin-like) domains.,subunit:Heterodimer and heterotetramer with GAS6.,tissue specificity:Highly expressed in metastatic colon tumors. Expressed in primary colon tumors. Weakly expressed in normal colon tissue.,

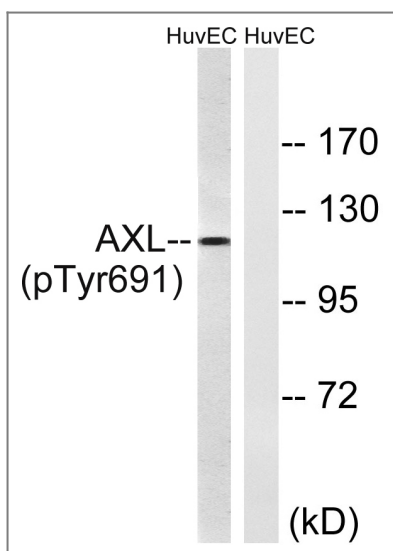
| Validation Data



Western Blot analysis of HuvEc cells using Phospho-Axl (Y691) Polyclonal Antibody diluted at 1:500



Immunohistochemistry analysis of paraffin-embedded human brain, using Axl (Phospho-Tyr691) Antibody. The picture on the right is blocked with the phospho peptide.



Western blot analysis of lysates from HUVEC cells treated with EGF 200ng/ml 15', using Axl (Phospho-Tyr691) Antibody. The lane on the right is blocked with the phospho peptide.

Contact information

Orders: order@immunoway.com
 Support: tech@immunoway.com
 Telephone: 877-594-3616 (Toll Free), 408-747-0185
 Website: <http://www.immunoway.com>
 Address: 2200 Ringwood Ave San Jose, CA 95131 USA



Please scan the QR code to access additional product information:
Axl (Phospho Tyr691) Rabbit pAb