

Vimentin (Phospho Ser83) Rabbit pAb

CatalogNo: YP0766 **Orthogonal Validated** 

Key Features

Host Species

- Rabbit

Reactivity

- Human, Mouse, Rat

Applications

- WB, IHC, IF, ELISA

MW

- 54kD (Observed)

Isotype

- IgG

Storage

Storage* -15°C to -25°C/1 year (Do not lower than -25°C)**Formulation** Liquid in PBS containing 50% glycerol, 0.5% BSA and 0.02% sodium azide.

Recommended Dilution Ratios

WB 1:500-1:2000**IHC 1:100-1:300****ELISA 1:10000****IF 1:50-200**

Basic Information

Clonality Polyclonal

Immunogen Information

Immunogen The antiserum was produced against synthesized peptide derived from human Vimentin around the phosphorylation site of Ser83. AA range:56-105

Specificity

Phospho-Vimentin (S83) Polyclonal Antibody detects endogenous levels of Vimentin protein only when phosphorylated at S83. The name of modified sites may be influenced by many factors, such as species (the modified site was not originally found in human samples) and the change of protein sequence (the previous protein sequence is incomplete, and the protein sequence may be prolonged with the development of protein sequencing technology). When naming, we will use the "numbers" in historical reference to keep the sites consistent with the reports. The antibody binds to the following modification sequence (lowercase letters are modification sites): QDsVD

Target Information

Gene name VIM

Protein Name Vimentin

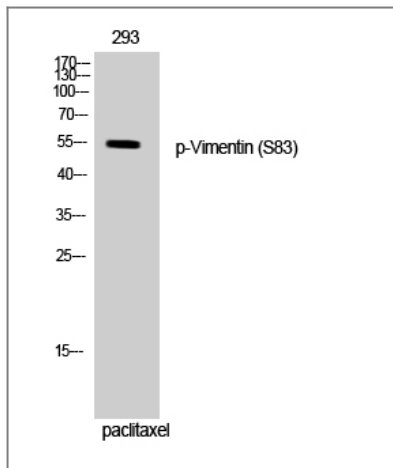
Organism	Gene ID	UniProt ID
Human	7431;	P08670;
Mouse	22352;	P20152;
Rat	81818;	P31000;

Cellular Localization Cytoplasm . Cytoplasm, cytoskeleton . Nucleus matrix . Cell membrane .

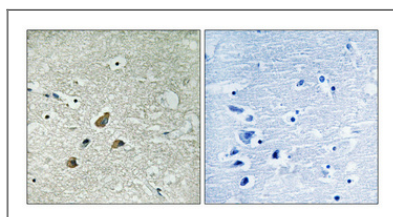
Tissue specificity Highly expressed in fibroblasts, some expression in T- and B-lymphocytes, and little or no expression in Burkitt's lymphoma cell lines. Expressed in many hormone-independent mammary carcinoma cell lines.

Function Function: Vimentins are class-III intermediate filaments found in various non-epithelial cells, especially mesenchymal cells., online information: Vimentin entry, PTM: One of the most prominent phosphoproteins in various cells of mesenchymal origin. Phosphorylation is enhanced during cell division, at which time vimentin filaments are significantly reorganized., sequence Caution: Intron retention., similarity: Belongs to the intermediate filament family., subunit: Homopolymer. Interacts with HCV core protein. Interacts with LGSN and SYNM., tissue specificity: Highly expressed in fibroblasts, some expression in T- and B-lymphocytes, and little or no expression in Burkitt's lymphoma cell lines. Expressed in many hormone-independent mammary carcinoma cell lines.,

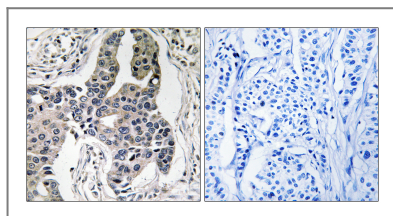
Validation Data



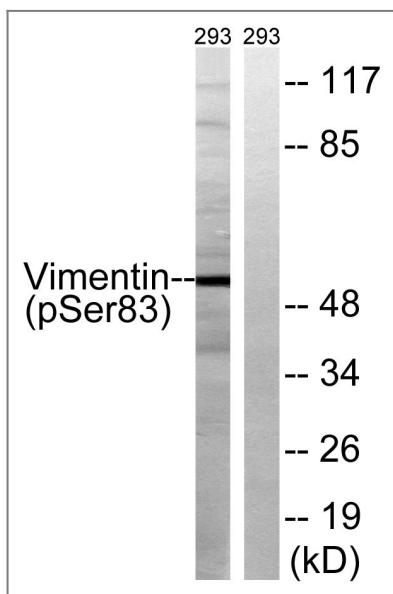
Western Blot analysis of 293 cells using Phospho-Vimentin (S83) Polyclonal Antibody



Immunohistochemical analysis of paraffin-embedded Human brain. Antibody was diluted at 1:100(4° overnight). High-pressure and temperature Tris-EDTA,pH8.0 was used for antigen retrieval. Negative contrl (right) obtaned from antibody was pre-absorbed by immunogen peptide.



Immunohistochemistry analysis of paraffin-embedded human breast carcinoma, using Vimentin (Phospho-Ser83) Antibody. The picture on the right is blocked with the phospho peptide.



Western blot analysis of lysates from 293 cells treated with paclitaxel 1uM 24h, using Vimentin (Phospho-Ser83) Antibody. The lane on the right is blocked with the phospho peptide.

Contact information

Orders: order@immunoway.com
 Support: tech@immunoway.com
 Telephone: 877-594-3616 (Toll Free), 408-747-0185
 Website: <http://www.immunoway.com>
 Address: 2200 Ringwood Ave San Jose, CA 95131 USA



Please scan the QR code to access additional product information:
Vimentin (Phospho Ser83) Rabbit pAb

