

Rho GDI α (Phospho Ser174) Rabbit pAb

CatalogNo: YP0762

Orthogonal Validated 

Key Features

Host Species

- Rabbit

Reactivity

- Human, Mouse, Rat

Applications

- WB, IHC, IF, ELISA

MW

- 23kD (Observed)

Isotype

- IgG

Recommended Dilution Ratios

WB 1:500-1:2000**IHC 1:100-1:300****ELISA 1:20000****IF 1:50-200**

Storage

Storage* -15°C to -25°C/1 year (Do not lower than -25°C)**Formulation** Liquid in PBS containing 50% glycerol, 0.5% BSA and 0.02% sodium azide.

Basic Information

Clonality Polyclonal

Immunogen Information

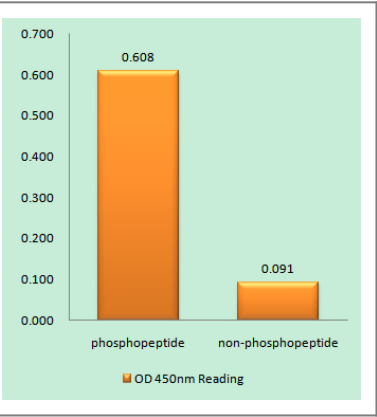
Immunogen The antiserum was produced against synthesized peptide derived from human ARHGDI α around the phosphorylation site of Ser174. AA range: 140-189

Specificity Phospho-Rho GDIα (S174) Polyclonal Antibody detects endogenous levels of Rho GDIα protein only when phosphorylated at S174. The name of modified sites may be influenced by many factors, such as species (the modified site was not originally found in human samples) and the change of protein sequence (the previous protein sequence is incomplete, and the protein sequence may be prolonged with the development of protein sequencing technology). When naming, we will use the "numbers" in historical reference to keep the sites consistent with the reports. The antibody binds to the following modification sequence (lowercase letters are modification sites):RGsYS

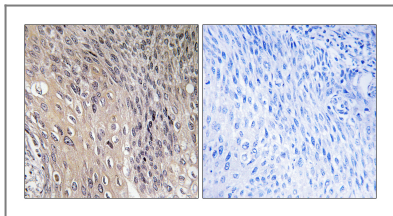
Target Information

Gene name	ARHGDI A		
Protein Name	Rho GDP-dissociation inhibitor 1		
	Organism	Gene ID	UniProt ID
	Human	396 ;	P52565 ;
	Mouse	192662 ;	Q99PT1 ;
	Rat	360678 ;	Q5XI73 ;
Cellular Localization	Cytoplasm .		
Tissue specificity	Brain,Cajal-Retzius cell,Colon,Epithelium,Fetal brain cortex,Lung,M		
Function	Function:Regulates the GDP/GTP exchange reaction of the Rho proteins by inhibiting the dissociation of GDP from them, and the subsequent binding of GTP to them.,similarity:Belongs to the Rho GDI family.,subunit:Monomer.,		

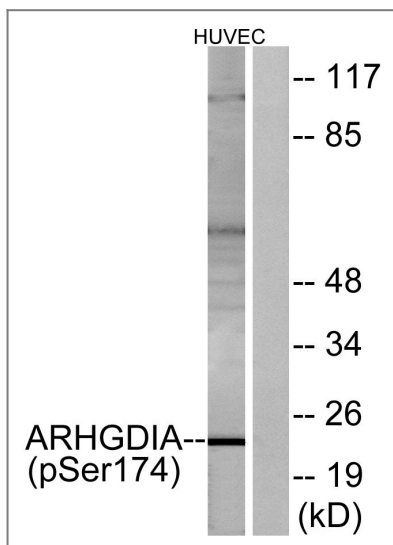
Validation Data



Enzyme-Linked Immunosorbent Assay (Phospho-ELISA) for Immunogen Phosphopeptide (Phospho-left) and Non-Phosphopeptide (Phospho-right), using ARHGDI A (Phospho-Ser174) Antibody



Immunohistochemistry analysis of paraffin-embedded human cervix carcinoma, using ARHGDIA (Phospho-Ser174) Antibody. The picture on the right is blocked with the phospho peptide.



Western blot analysis of lysates from HUVEC cells treated with EGF 200ng/ml 30', using ARHGDIA (Phospho-Ser174) Antibody. The lane on the right is blocked with the phospho peptide.

Contact information

Orders: order@immunoway.com
 Support: tech@immunoway.com
 Telephone: 877-594-3616 (Toll Free), 408-747-0185
 Website: <http://www.immunoway.com>
 Address: 2200 Ringwood Ave San Jose, CA 95131 USA



Please scan the QR code to access additional product information:
Rho GDIα (Phospho Ser174) Rabbit pAb

For Research Use Only. Not for Use in Diagnostic Procedures.

[Antibody](#) | [ELISA Kits](#) | [Protein](#) | [Reagents](#)