

## PDCD4 (Phospho Ser457) Rabbit pAb

CatalogNo: YP0761 **Orthogonal Validated** 

### Key Features

#### Host Species

- Rabbit

#### Reactivity

- Human, Mouse, Rat

#### Applications

- WB, IHC, IF, ELISA

#### MW

- 51kD (Observed)

#### Isotype

- IgG

### Storage

**Storage\*** -15°C to -25°C/1 year (Do not lower than -25°C)**Formulation** Liquid in PBS containing 50% glycerol, 0.5% BSA and 0.02% sodium azide.

### Recommended Dilution Ratios

**WB 1:500-1:2000****IHC 1:100-1:300****ELISA 1:10000****IF 1:50-200**

### Basic Information

**Clonality** Polyclonal

### Immunogen Information

**Immunogen** The antiserum was produced against synthesized peptide derived from human PDCD4 around the phosphorylation site of Ser457. AA range: 420-469

## Specificity

Phospho-Pdcd-4 (S457) Polyclonal Antibody detects endogenous levels of Pdcd-4 protein only when phosphorylated at S457. The name of modified sites may be influenced by many factors, such as species (the modified site was not originally found in human samples) and the change of protein sequence (the previous protein sequence is incomplete, and the protein sequence may be prolonged with the development of protein sequencing technology). When naming, we will use the "numbers" in historical reference to keep the sites consistent with the reports. The antibody binds to the following modification sequence (lowercase letters are modification sites):FVSEG

## Target Information

**Gene name** PDCD4

**Protein Name** Programmed cell death protein 4

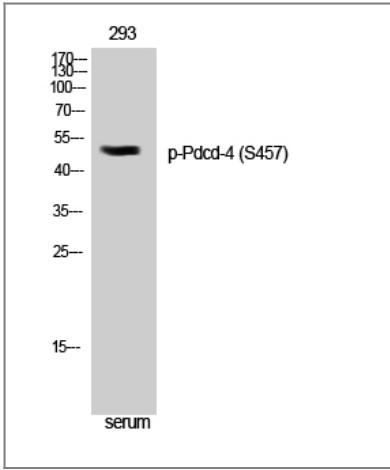
Organism	Gene ID	UniProt ID
Human	<a href="#">27250;</a>	<a href="#">Q53EL6;</a>
Mouse	<a href="#">18569;</a>	<a href="#">Q61823;</a>
Rat	<a href="#">64031;</a>	<a href="#">Q9JID1;</a>

**Cellular Localization** Nucleus . Cytoplasm . Shuttles between the nucleus and cytoplasm (By similarity). Predominantly nuclear under normal growth conditions, and when phosphorylated at Ser-457 (PubMed:16357133). .

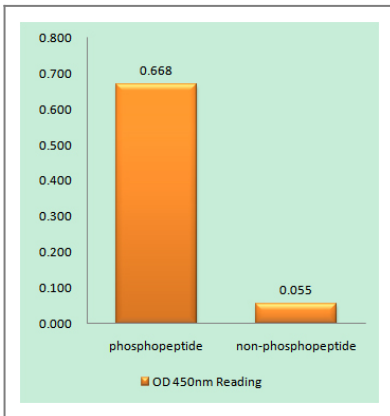
**Tissue specificity** Up-regulated in proliferative cells. Highly expressed in epithelial cells of the mammary gland. Reduced expression in lung cancer and colon carcinoma.

**Function** Caution:The sequence shown here is derived from an Ensembl automatic analysis pipeline and should be considered as preliminary data.,Disease:Loss of expression correlated with tumor progression of lung and colon carcinoma.,Domain:Binds EIF4A1 via the MA3 domains.,Function:Tumor suppressor. Inhibits tumor promoter-induced neoplastic transformation. Down-regulates the expression of MAP4K1, thus inhibiting events important in driving invasion, namely, MAPK85 activation and consequent JUN-dependent transcription. May play a role in apoptosis. Inhibits the helicase activity of EIF4A and cap-dependent translation. Binds RNA.,induction:IL2 stimulation inhibits expression, while IL12 increases expression.,sequence Caution:Contaminating sequence. Potential poly-A sequence.,similarity:Belongs to the PDCD4 family.,similarity:Contains 2 MI domains.,subcellular location:Shuttles between the nucleus and cytoplasm. Predominantly nuclear under normal growth conditions. Exported from the nucleus in the absence of serum.,subunit:Interacts with EIF4A1 and EIF4A2.,tissue specificity:Up-regulated in proliferative cells. Highly expressed in epithelial cells of the mammary gland.,

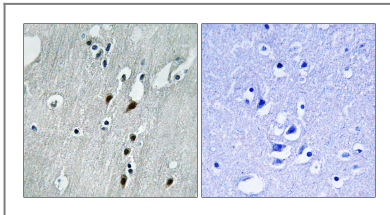
## Validation Data



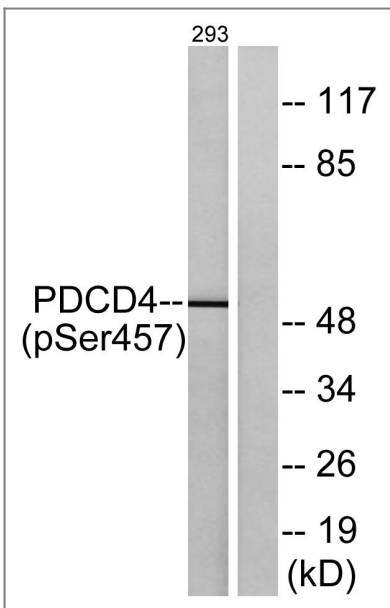
Western Blot analysis of 293 cells using Phospho-Pdcd-4 (S457) Polyclonal Antibody



Enzyme-Linked Immunosorbent Assay (Phospho-ELISA) for Immunogen Phosphopeptide (Phospho-left) and Non-Phosphopeptide (Phospho-right), using PDCD4 (Phospho-Ser457) Antibody



Immunohistochemistry analysis of paraffin-embedded human brain, using PDCD4 (Phospho-Ser457) Antibody. The picture on the right is blocked with the phospho peptide.



Western blot analysis of lysates from 293 cells treated with serum 20% 15', using PDCD4 (Phospho-Ser457) Antibody. The lane on the right is blocked with the phospho peptide.

## Contact information

Orders: order@immunoway.com  
Support: tech@immunoway.com  
Telephone: 877-594-3616 (Toll Free), 408-747-0185  
Website: http://www.immunoway.com  
Address: 2200 Ringwood Ave San Jose, CA 95131 USA



Please scan the QR code  
to access additional  
product information:  
**PDCD4 (Phospho  
Ser457) Rabbit pAb**

---

For Research Use Only. Not for Use in Diagnostic Procedures.

[Antibody](#) | [ELISA Kits](#) | [Protein](#) | [Reagents](#)