

Rad52 (Phospho Tyr104) Rabbit pAb

CatalogNo: YP0758

Orthogonal Validated 

Key Features

Host Species

- Rabbit

Reactivity

- Human, Mouse, Monkey

Applications

- WB, IHC, IF, ELISA

MW

- 46kD (Observed)

Isotype

- IgG

Recommended Dilution Ratios

WB 1:500-1:2000**IHC 1:100-1:300****ELISA 1:20000****IF 1:50-200**

Storage

Storage*

-15°C to -25°C/1 year (Do not lower than -25°C)

Formulation

Liquid in PBS containing 50% glycerol, 0.5% BSA and 0.02% sodium azide.

Basic Information

Clonality

Polyclonal

Immunogen Information

Immunogen

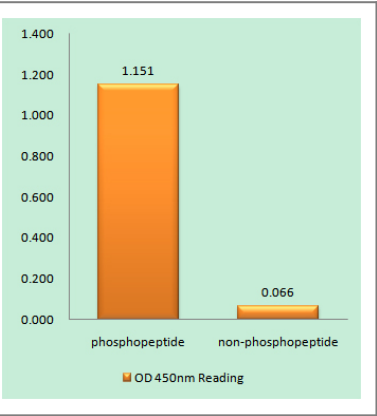
The antiserum was produced against synthesized peptide derived from human RAD52 around the phosphorylation site of Tyr104. AA range: 70-119

Specificity Phospho-Rad52 (Y104) Polyclonal Antibody detects endogenous levels of Rad52 protein only when phosphorylated at Y104. The name of modified sites may be influenced by many factors, such as species (the modified site was not originally found in human samples) and the change of protein sequence (the previous protein sequence is incomplete, and the protein sequence may be prolonged with the development of protein sequencing technology). When naming, we will use the "numbers" in historical reference to keep the sites consistent with the reports. The antibody binds to the following modification sequence (lowercase letters are modification sites):KFyVG

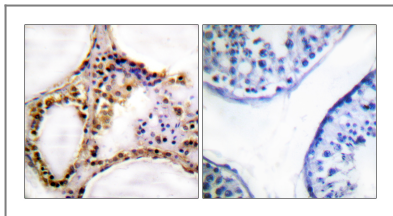
Target Information

Gene name	RAD52		
Protein Name	DNA repair protein RAD52 homolog		
	Organism	Gene ID	UniProt ID
	Human	5893 ;	P43351 ;
	Mouse	19365 ;	P43352 ;
Cellular Localization	Nucleus .		
Tissue specificity	Amygdala,Brain,Embryonal rhabdomyosarcoma,Hippocampus,PCR rescued c		
Function	Function:Involved in double-stranded break repair. Plays a central role in genetic recombination and DNA repair by promoting the annealing of complementary single-stranded DNA and by stimulation of the RAD51 recombinase.,PTM:Phosphorylated upon DNA damage, probably by ATM or ATR.,similarity:Belongs to the RAD52 family.,subunit:Forms a undecameric ring.,		

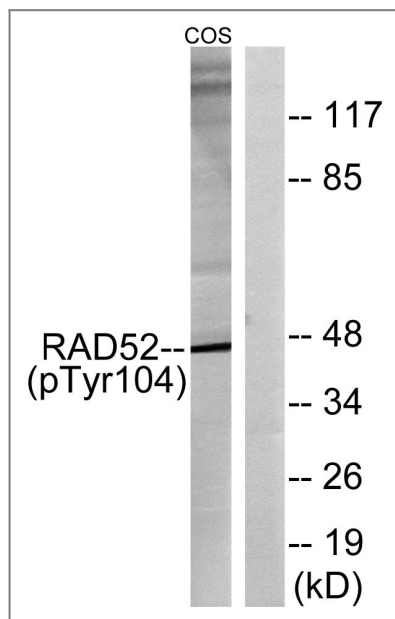
Validation Data



Enzyme-Linked Immunosorbent Assay (Phospho-ELISA) for Immunogen Phosphopeptide (Phospho-left) and Non-Phosphopeptide (Phospho-right), using RAD52 (Phospho-Tyr104) Antibody



Immunohistochemistry analysis of paraffin-embedded human testis, using RAD52 (Phospho-Tyr104) Antibody. The picture on the right is blocked with the phospho peptide.



Western blot analysis of lysates from COS7 cells treated with H₂O₂ 100uM 30', using RAD52 (Phospho-Tyr104) Antibody. The lane on the right is blocked with the phospho peptide.

Contact information

Orders: order@immunoway.com
 Support: tech@immunoway.com
 Telephone: 877-594-3616 (Toll Free), 408-747-0185
 Website: <http://www.immunoway.com>
 Address: 2200 Ringwood Ave San Jose, CA 95131 USA



Please scan the QR code to access additional product information:
Rad52 (Phospho-Tyr104) Rabbit pAb

For Research Use Only. Not for Use in Diagnostic Procedures.

[Antibody](#) | [ELISA Kits](#) | [Protein](#) | [Reagents](#)