

## TPH1 (Phospho Ser58) Rabbit pAb

CatalogNo: YP0747 Orthogonal Validated 

### Key Features

#### Host Species

- Rabbit

#### Reactivity

- Human, Mouse, Rat

#### Applications

- WB, IHC, IF, ELISA

#### MW

- 51kD (Observed)

#### Isotype

- IgG

### Storage

**Storage\*** -15°C to -25°C/1 year (Do not lower than -25°C)

**Formulation** Liquid in PBS containing 50% glycerol, 0.5% BSA and 0.02% sodium azide.

### Recommended Dilution Ratios

**WB 1:500-1:2000**

**IHC 1:100-1:300**

**ELISA 1:10000**

**IF 1:50-200**

### Basic Information

**Clonality** Polyclonal

### Immunogen Information

**Immunogen** The antiserum was produced against synthesized peptide derived from human Tryptophan Hydroxylase around the phosphorylation site of Ser58. AA range:26-75

## Specificity

Phospho-TPH1 (S58) Polyclonal Antibody detects endogenous levels of TPH1 protein only when phosphorylated at S58. The name of modified sites may be influenced by many factors, such as species (the modified site was not originally found in human samples) and the change of protein sequence (the previous protein sequence is incomplete, and the protein sequence may be prolonged with the development of protein sequencing technology). When naming, we will use the "numbers" in historical reference to keep the sites consistent with the reports. The antibody binds to the following modification sequence (lowercase letters are modification sites):RNSEF

---

## Target Information

**Gene name** TPH1

**Protein Name** Tryptophan 5-hydroxylase 1

Organism	Gene ID	UniProt ID
Human	<a href="#">7166</a> ;	<a href="#">P17752</a> ;
Mouse	<a href="#">21990</a> ;	<a href="#">P17532</a> ;
Rat	<a href="#">24848</a> ;	<a href="#">P09810</a> ;

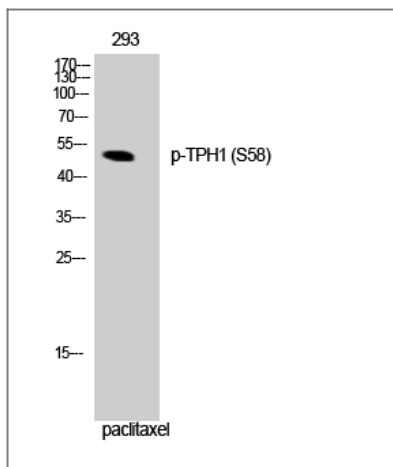
**Cellular Localization** cytosol,neuron projection,

**Tissue specificity** [Isoform 2]: Seems to be less widely expressed than isoform 1.

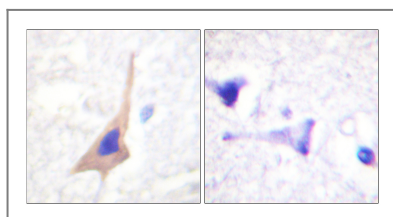
**Function** Catalytic activity:L-tryptophan + tetrahydrobiopterin + O(2) = 5-hydroxy-L-tryptophan + 4a-hydroxytetrahydrobiopterin.,cofactor:Fe(2+) ion.,pathway:Aromatic compound metabolism; serotonin biosynthesis; serotonin from L-tryptophan: step 1/2.,similarity:Belongs to the biopterin-dependent aromatic amino acid hydroxylase family.,similarity:Contains 1 ACT domain.,subunit:Multimer of identical subunits.,tissue specificity:Isoform 2 seems to be less widely expressed than isoform 1.,

---

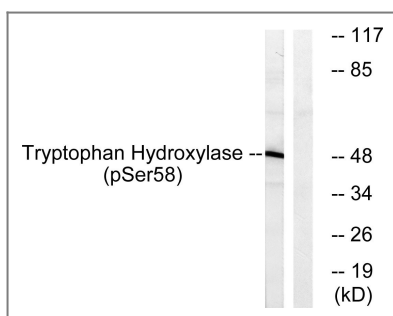
## Validation Data



Western Blot analysis of 293 cells using Phospho-TPH1 (S58) Polyclonal Antibody



Immunohistochemistry analysis of paraffin-embedded human brain, using Tryptophan Hydroxylase (Phospho-Ser58) Antibody. The picture on the right is blocked with the phospho peptide.



Western blot analysis of lysates from 293 cells treated with paclitaxel 1uM 24h, using Tryptophan Hydroxylase (Phospho-Ser58) Antibody. The lane on the right is blocked with the phospho peptide.

## Contact information

Orders: [order@immunoway.com](mailto:order@immunoway.com)  
 Support: [tech@immunoway.com](mailto:tech@immunoway.com)  
 Telephone: 877-594-3616 (Toll Free), 408-747-0185  
 Website: <http://www.immunoway.com>  
 Address: 2200 Ringwood Ave San Jose, CA 95131 USA



Please scan the QR code to access additional product information:  
**TPH1 (Phospho Ser58) Rabbit pAb**

For Research Use Only. Not for Use in Diagnostic Procedures.

[Antibody](#) | [ELISA Kits](#) | [Protein](#) | [Reagents](#)