

## GluR4 (Phospho Ser862) Rabbit pAb

CatalogNo: YP0740 Orthogonal Validated 

### Key Features

#### Host Species

- Rabbit

#### Reactivity

- Human, Mouse, Rat

#### Applications

- WB, IHC, IF, ELISA

#### MW

- 100kD (Observed)

#### Isotype

- IgG

### Storage

**Storage\*** -15°C to -25°C/1 year (Do not lower than -25°C)

**Formulation** Liquid in PBS containing 50% glycerol, 0.5% BSA and 0.02% sodium azide.

### Recommended Dilution Ratios

**WB 1:500-1:2000**

**IHC 1:100-1:300**

**ELISA 1:5000**

**IF 1:50-200**

### Basic Information

**Clonality** Polyclonal

### Immunogen Information

**Immunogen** The antiserum was produced against synthesized peptide derived from human GluR4 around the phosphorylation site of Ser862. AA range: 828-877

## Specificity

Phospho-GluR4 (S862) Polyclonal Antibody detects endogenous levels of GluR4 protein only when phosphorylated at S862. The name of modified sites may be influenced by many factors, such as species (the modified site was not originally found in human samples) and the change of protein sequence (the previous protein sequence is incomplete, and the protein sequence may be prolonged with the development of protein sequencing technology). When naming, we will use the "numbers" in historical reference to keep the sites consistent with the reports. The antibody binds to the following modification sequence (lowercase letters are modification sites):RLsIT

## Target Information

**Gene name** GRIA4

**Protein Name** Glutamate receptor 4

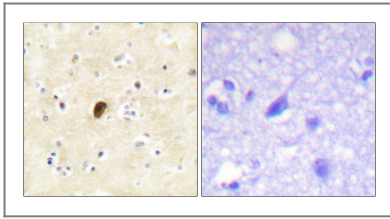
Organism	Gene ID	UniProt ID
Human	<a href="#">2893</a> ;	<a href="#">P48058</a> ;
Mouse	<a href="#">14802</a> ;	<a href="#">Q9Z2W8</a> ;
Rat	<a href="#">29629</a> ;	<a href="#">P19493</a> ;

**Cellular Localization** Cell membrane; Multi-pass membrane protein. Cell junction, synapse, postsynaptic cell membrane; Multi-pass membrane protein. Cell projection, dendrite. Interaction with CNIH2, CNIH3 and PRKCG promotes cell surface expression. .

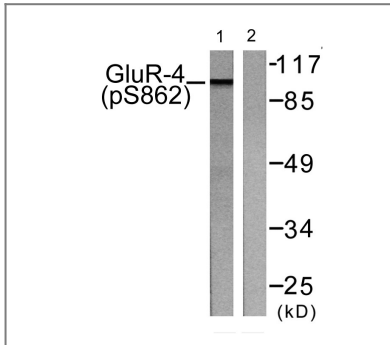
**Tissue specificity** Brain, Donated clones, PCR rescued clones,

**Function** Function: Ionotropic glutamate receptor. L-glutamate acts as an excitatory neurotransmitter at many synapses in the central nervous system. Binding of the excitatory neurotransmitter L-glutamate induces a conformation change, leading to the opening of the cation channel, and thereby converts the chemical signal to an electrical impulse. The receptor then desensitizes rapidly and enters a transient inactive state, characterized by the presence of bound agonist., miscellaneous: The postsynaptic actions of Glu are mediated by a variety of receptors that are named according to their selective agonists. This receptor binds AMPA (quisqualate) > glutamate > kainate., PTM: Palmitoylated. Depalmitoylated upon glutamate stimulation. Cys-611 palmitoylation leads to Golgi retention and decreased cell surface expression. In contrast, Cys-837 palmitoylation does not affect cell surface expression but regulates stimulation-dependent endocytosis., similarity: Belongs to the glutamate-gated ion channel (TC 1.A.10) family., subunit: Homotetramer or heterotetramer of pore-forming glutamate receptor subunits. Tetramers may be formed by the dimerization of dimers. Interacts with EPB41L1 via its C-terminus.,

## Validation Data



Immunohistochemistry analysis of paraffin-embedded human brain, using GluR4 (Phospho-Ser862) Antibody. The picture on the right is blocked with the phospho peptide.



Western blot analysis of lysates from HepG2 cells treated with Forskolin 40nM 30', using GluR4 (Phospho-Ser862) Antibody. The lane on the right is blocked with the phospho peptide.

## Contact information

Orders: [order@immunoway.com](mailto:order@immunoway.com)  
Support: [tech@immunoway.com](mailto:tech@immunoway.com)  
Telephone: 877-594-3616 (Toll Free), 408-747-0185  
Website: <http://www.immunoway.com>  
Address: 2200 Ringwood Ave San Jose, CA 95131 USA



Please scan the QR code to access additional product information:  
**GluR4 (Phospho Ser862) Rabbit pAb**

For Research Use Only. Not for Use in Diagnostic Procedures.

[Antibody](#) | [ELISA Kits](#) | [Protein](#) | [Reagents](#)