

## Dematin (Phospho Ser403) Rabbit pAb

CatalogNo: YP0737 **Orthogonal Validated** 

### Key Features

#### Host Species

- Rabbit

#### Reactivity

- Human, Mouse

#### Applications

- WB, IHC, IF, ELISA

#### MW

- 55kD (Observed)

#### Isotype

- IgG

### Storage

**Storage\*** -15°C to -25°C/1 year (Do not lower than -25°C)**Formulation** Liquid in PBS containing 50% glycerol, 0.5% BSA and 0.02% sodium azide.

### Recommended Dilution Ratios

**WB 1:500-1:2000****IHC 1:100-1:300****ELISA 1:10000****IF 1:50-200**

### Basic Information

**Clonality** Polyclonal

### Immunogen Information

**Immunogen** The antiserum was produced against synthesized peptide derived from human Dematin around the phosphorylation site of Ser403. AA range: 356-405

## Specificity

Phospho-Dematin (S403) Polyclonal Antibody detects endogenous levels of Dematin protein only when phosphorylated at S403. The name of modified sites may be influenced by many factors, such as species (the modified site was not originally found in human samples) and the change of protein sequence (the previous protein sequence is incomplete, and the protein sequence may be prolonged with the development of protein sequencing technology). When naming, we will use the "numbers" in historical reference to keep the sites consistent with the reports. The antibody binds to the following modification sequence (lowercase letters are modification sites):KAsLF

## Target Information

**Gene name** EPB49

**Protein Name** Dematin

Organism	Gene ID	UniProt ID
Human	<a href="#">2039;</a>	<a href="#">Q08495;</a>
Mouse	<a href="#">13829;</a>	<a href="#">Q9WV69;</a>

### Cellular Localization

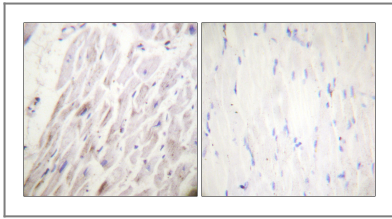
Cytoplasm. Cytoplasm, cytosol. Cytoplasm, perinuclear region . Cytoplasm, cytoskeleton. Cell membrane. Membrane . Endomembrane system. Cell projection . Localized at the spectrin-actin junction of erythrocyte plasma membrane. Localized to intracellular membranes and the cytoskeletal network. Localized at intracellular membrane-bounded organelle compartment in platelets that likely represent the dense tubular network membrane. Detected at the cell membrane and at the parasitophorous vacuole in malaria-infected erythrocytes at late stages of plasmodium berghei or falciparum development.

**Tissue specificity** Expressed in platelets (at protein level). Expressed in heart, brain, lung, skeletal muscle, and kidney.

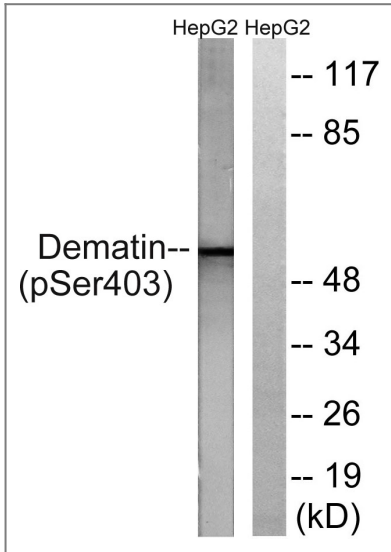
### Function

Domain:Consists of a large core fragment, the amino-terminal portion, and a small headpiece, the C-terminal portion. The headpiece can bind but cannot bundle actin filaments.,Domain:Contains at least two actin-binding sites, one in the headpiece domain and one in the amino-terminal portion.,Function:Actin-bundling protein. May function in mitogen-activated protein kinase pathway.,PTM:Actin-bundling activity is abolished upon phosphorylation by cAMP-dependent protein kinase.,PTM:The N-terminus is blocked.,similarity:Belongs to the villin/gelsolin family.,similarity:Contains 1 HP (headpiece) domain.,subunit:Exists in solution as a trimer of two short isoforms and one long isoform linked by disulfide bonds (Probable). Interacts with RASGRF2.,tissue specificity:Heart, brain, lung, skeletal muscle, and kidney.,

## Validation Data



Immunohistochemistry analysis of paraffin-embedded human heart, using Dematin (Phospho-Ser403) Antibody. The picture on the right is blocked with the phospho peptide.



Western blot analysis of lysates from HepG2 cells treated with Insulin 0.01U/ml 15', using Dematin (Phospho-Ser403) Antibody. The lane on the right is blocked with the phospho peptide.

## Contact information

Orders: [order@immunoway.com](mailto:order@immunoway.com)  
Support: [tech@immunoway.com](mailto:tech@immunoway.com)  
Telephone: 877-594-3616 (Toll Free), 408-747-0185  
Website: <http://www.immunoway.com>  
Address: 2200 Ringwood Ave San Jose, CA 95131 USA



Please scan the QR code to access additional product information:  
**Dematin (Phospho Ser403) Rabbit pAb**

For Research Use Only. Not for Use in Diagnostic Procedures.

[Antibody](#) | [ELISA Kits](#) | [Protein](#) | [Reagents](#)