

p38 (Phospho Tyr323) Rabbit pAb

CatalogNo: YP0718

Orthogonal Validated 

Key Features

Host Species

- Rabbit

Reactivity

- Human, Mouse, Rat

Applications

- IF, WB, IHC, ELISA

MW

- 38kD (Observed)

Isotype

- IgG

Recommended Dilution Ratios

IF 1:50-200**WB 1:500-1:2000****IHC 1:100-1:300****ELISA 1:5000****Not yet tested in other applications**

Storage

Storage*

-15°C to -25°C/1 year (Do not lower than -25°C)

Formulation

Liquid in PBS containing 50% glycerol, 0.5% BSA and 0.02% sodium azide.

Basic Information

Clonality

Polyclonal

Immunogen Information

Immunogen

The antiserum was produced against synthesized peptide derived from human p38 MAPK around the phosphorylation site of Tyr322. AA range: 288-337

Specificity Phospho-p38 (Y323) Polyclonal Antibody detects endogenous levels of p38 protein only when phosphorylated at Y323. The name of modified sites may be influenced by many factors, such as species (the modified site was not originally found in human samples) and the change of protein sequence (the previous protein sequence is incomplete, and the protein sequence may be prolonged with the development of protein sequencing technology). When naming, we will use the "numbers" in historical reference to keep the sites consistent with the reports. The antibody binds to the following modification sequence (lowercase letters are modification sites):DPyDQ

Target Information

Gene name MAPK14
Protein Name Mitogen-activated protein kinase 14

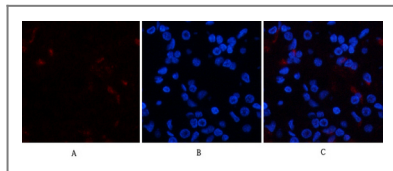
Organism	Gene ID	UniProt ID
Human	1432 ;	Q16539 ;
Mouse	26416 ;	P47811 ;
Rat		P70618 ;

Cellular Localization Cytoplasm . Nucleus .

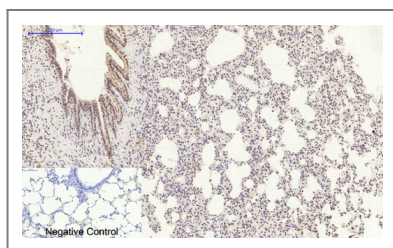
Tissue specificity Brain, heart, placenta, pancreas and skeletal muscle. Expressed to a lesser extent in lung, liver and kidney.

Function Catalytic activity:ATP + a protein = ADP + a phosphoprotein.,cofactor:Magnesium.,Domain:The TXY motif contains the threonine and tyrosine residues whose phosphorylation activates the MAP kinases.,enzyme regulation:Activated by threonine and tyrosine phosphorylation by either of two dual specificity kinases, MAP2K3 or MAP2K6, and potentially also MAP2K4. Inhibited by dual specificity phosphatases, such as DUSP1. Specifically inhibited by the binding of pyridinyl-imidazole compounds, which are cytokine-suppressive anti-inflammatory drugs (CSAID). Isoform Mxi2 is 100-fold less sensitive to these agents than the other isoforms and is not inhibited by DUSP1. Isoform Exip is not activated by MAP2K6.,Function:Responds to activation by environmental stress, pro-inflammatory cytokines and lipopolysaccharide (LPS) by phosphorylating a number of transcription factors, such as ELK1 and ATF2 and several downstream kinases, such as MAPKAPK2 and MAPKAPK5. Plays a critical role in the production of some cytokines, for example IL-6. May play a role in stabilization of EPO mRNA during hypoxic stress. Isoform Mxi2 activation is stimulated by mitogens and oxidative stress and only poorly phosphorylates ELK1 and ATF2. Isoform Exip may play a role in the early onset of apoptosis.,online information:P38 mitogen-activated protein kinases entry,PTM:Dually phosphorylated on Thr-180 and Tyr-182, which activates the enzyme.,PTM:Phosphorylated upon DNA damage, probably by ATM or ATR.,similarity:Belongs to the protein kinase superfamily. CMGC Ser/Thr protein kinase family. MAP kinase subfamily.,similarity:Contains 1 protein kinase domain.,subunit:Binds to a kinase interaction motif within the protein tyrosine phosphatase, PTPRR. This interaction retains MAPK14 in the cytoplasm and prevents nuclear accumulation. Interacts with SPAG9 (By similarity). Interacts with NP60 and FAM48A.,tissue specificity:Brain, heart, placenta, pancreas and skeletal muscle. Expressed to a lesser extent in lung, liver and kidney.,

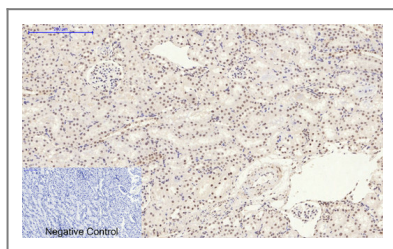
Validation Data



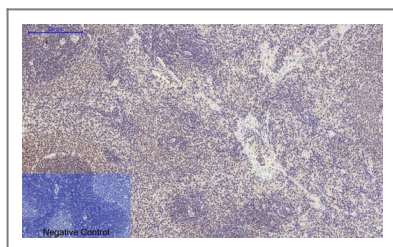
Immunofluorescence analysis of human-stomach tissue. 1,p38 (phospho Tyr323) Polyclonal Antibody(red) was diluted at 1:200(4°C,overnight). 2, Cy3 labled Secondary antibody was diluted at 1:300(room temperature, 50min).3, Picture B: DAPI(blue) 10min. Picture A:Target. Picture B: DAPI. Picture C: merge of A+B



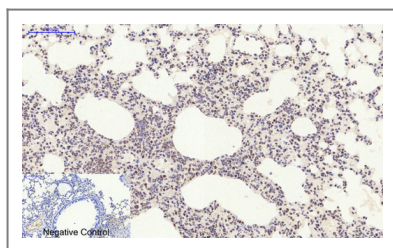
Immunohistochemical analysis of paraffin-embedded Rat-lung tissue. 1,p38 (phospho Tyr323) Polyclonal Antibody was diluted at 1:200(4°C,overnight). 2, Sodium citrate pH 6.0 was used for antibody retrieval(>98°C,20min). 3,Secondary antibody was diluted at 1:200(room tempeRature, 30min). Negative control was used by secondary antibody only.



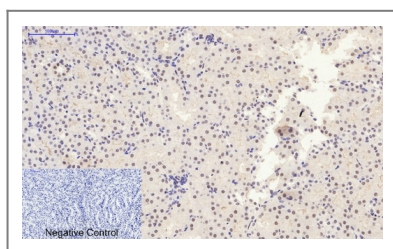
Immunohistochemical analysis of paraffin-embedded Rat-kidney tissue. 1,p38 (phospho Tyr323) Polyclonal Antibody was diluted at 1:200(4°C,overnight). 2, Sodium citrate pH 6.0 was used for antibody retrieval(>98°C,20min). 3,Secondary antibody was diluted at 1:200(room tempeRature, 30min). Negative control was used by secondary antibody only.



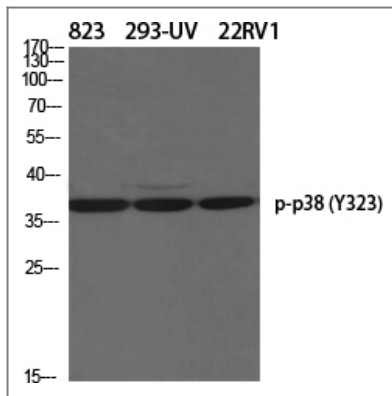
Immunohistochemical analysis of paraffin-embedded Rat-spleen tissue. 1,p38 (phospho Tyr323) Polyclonal Antibody was diluted at 1:200(4°C,overnight). 2, Sodium citrate pH 6.0 was used for antibody retrieval(>98°C,20min). 3,Secondary antibody was diluted at 1:200(room tempeRature, 30min). Negative control was used by secondary antibody only.



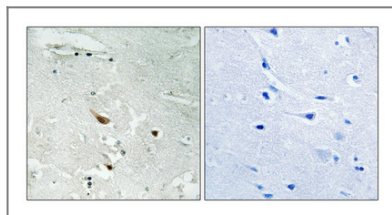
Immunohistochemical analysis of paraffin-embedded Mouse-lung tissue. 1,p38 (phospho Tyr323) Polyclonal Antibody was diluted at 1:200(4°C,overnight). 2, Sodium citrate pH 6.0 was used for antibody retrieval(>98°C,20min). 3,Secondary antibody was diluted at 1:200(room tempeRature, 30min). Negative control was used by secondary antibody only.



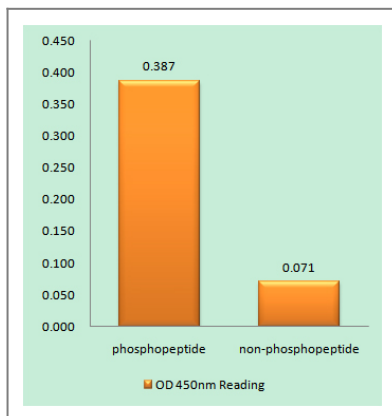
Immunohistochemical analysis of paraffin-embedded Mouse-kidney tissue. 1,p38 (phospho Tyr323) Polyclonal Antibody was diluted at 1:200(4°C,overnight). 2, Sodium citrate pH 6.0 was used for antibody retrieval(>98°C,20min). 3,Secondary antibody was diluted at 1:200(room tempeRature, 30min). Negative control was used by secondary antibody only.



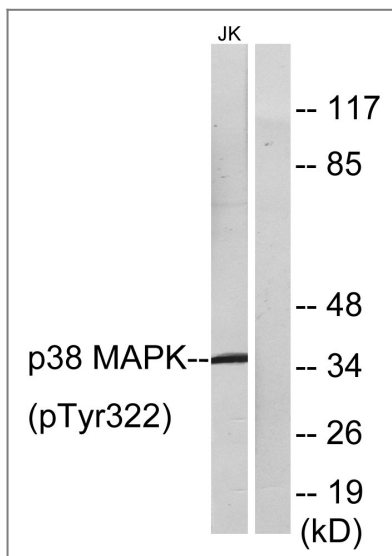
Western Blot analysis of various cells using Phospho-p38 (Y323) Polyclonal Antibody diluted at 1:500



Immunohistochemical analysis of paraffin-embedded Human brain. Antibody was diluted at 1:100(4° overnight). High-pressure and temperature Tris-EDTA,pH8.0 was used for antigen retrieval. Negative ctrl (right) obtained from antibody was pre-absorbed by immunogen peptide.



Enzyme-Linked Immunosorbent Assay (Phospho-ELISA) for Immunogen Phosphopeptide (Phospho-left) and Non-Phosphopeptide (Phospho-right), using p38 MAPK (Phospho-Tyr322) Antibody



Western blot analysis of lysates from Jurkat cells, using p38 MAPK (Phospho-Tyr322) Antibody. The lane on the right is blocked with the phospho peptide.

Contact information

Orders: order@immunoway.com
Support: tech@immunoway.com
Telephone: 877-594-3616 (Toll Free), 408-747-0185
Website: http://www.immunoway.com
Address: 2200 Ringwood Ave San Jose, CA 95131 USA



Please scan the QR code
to access additional
product information:
**p38 (Phospho
Tyr323) Rabbit pAb**

For Research Use Only. Not for Use in Diagnostic Procedures.

[Antibody](#) | [ELISA Kits](#) | [Protein](#) | [Reagents](#)