

PKD1/2/3 (Phospho Ser738/742) Rabbit pAb

CatalogNo: YP0706 Orthogonal Validated 

Key Features

Host Species

- Rabbit

Reactivity

- Human, Mouse, Rat

Applications

- WB, IHC, IF, ELISA

MW

- 101kD (Observed)

Isotype

- IgG

Storage

Storage* -15°C to -25°C/1 year (Do not lower than -25°C)

Formulation Liquid in PBS containing 50% glycerol, 0.5% BSA and 0.02% sodium azide.

Recommended Dilution Ratios

WB 1:500-1:2000

IHC 1:100-1:300

ELISA 1:5000

IF 1:50-200

Basic Information

Clonality Polyclonal

Immunogen Information

Immunogen The antiserum was produced against synthesized peptide derived from human PKD1/2/3/PKC mu around the phosphorylation site of Ser738 and Ser742. AA range: 706-755

Specificity

This antibody detects endogenous levels of PKD1/2/3 only when phosphorylated at Ser738 or Ser742, and dually phosphorylated at two sites. The name of modified sites may be influenced by many factors, such as species (the modified site was not originally found in human samples) and the change of protein sequence (the previous protein sequence is incomplete, and the protein sequence may be prolonged with the development of protein sequencing technology). When naming, we will use the "numbers" in historical reference to keep the sites consistent with the reports. The antibody binds to the following modification sequence (lowercase letters are modification sites):EKsFRRsV

Target Information

Gene name KPCD1/KPCD2/KPCD3

Protein Name Serine/threonine-protein kinase D1/2/3

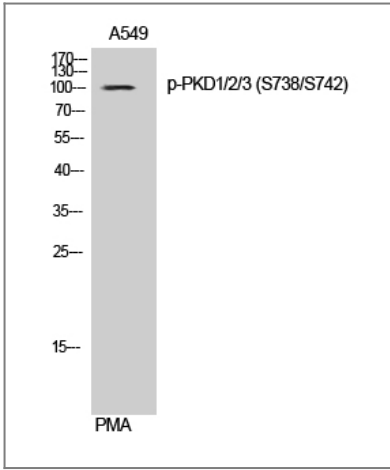
Organism	Gene ID	UniProt ID
Human	5587 ; 25865 ; 23683 ;	Q15139 ; Q9BZL6 ; O94806 ;
Mouse	18760 ; 101540 ; 75292 ;	
Rat	85421 ; 292658 ;	Q9WTQ1 ; Q5XIS9 ;

Cellular Localization Cytoplasm . Cell membrane . Golgi apparatus, trans-Golgi network . Translocation to the cell membrane is required for kinase activation.

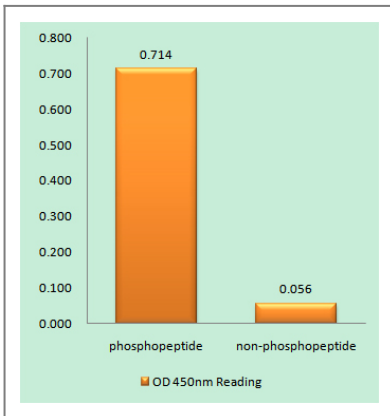
Tissue specificity Placenta, Testis,

Function Catalytic activity:ATP + a protein = ADP + a phosphoprotein.,enzyme regulation:Activated by diacylglycerol and phorbol esters.,Function:Calcium-independent, phospholipid-dependent, serine- and threonine-specific kinase involved in resistance to oxidative stress.,PTM:Phosphorylation of Ser-738 and/or Ser-742 in activated PKD is mediated by transphosphorylation (By similarity). Phosphorylation of Tyr-463 mediated by the Src/Abl pathway in response to oxidative stress activates the kinase.,similarity:Belongs to the protein kinase superfamily.,similarity:Belongs to the protein kinase superfamily. CAMK Ser/Thr protein kinase family. PKD subfamily.,similarity:Contains 1 PH domain.,similarity:Contains 1 protein kinase domain.,similarity:Contains 2 phorbol-ester/DAG-type zinc fingers.,subunit:Interacts (via N-terminus) with ADAP1/CENTA1. Interacts with Src.,

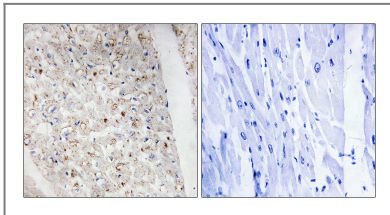
Validation Data



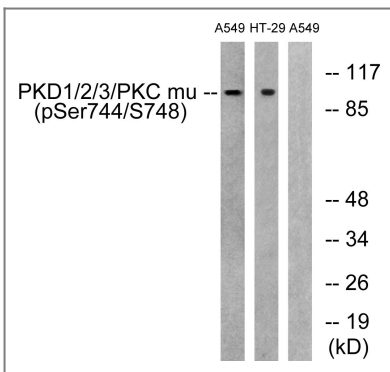
Western Blot analysis of A549 cells using Phospho-PKD1/2/3 (S738/S742) Polyclonal Antibody



Enzyme-Linked Immunosorbent Assay (Phospho-ELISA) for Immunogen Phosphopeptide (Phospho-left) and Non-Phosphopeptide (Phospho-right), using PKD1/2/3/PKC mu (Phospho-Ser738+Ser742) Antibody



Immunohistochemistry analysis of paraffin-embedded human heart, using PKD1/2/3/PKC mu (Phospho-Ser738+Ser742) Antibody. The picture on the right is blocked with the phospho peptide.



Western blot analysis of lysates from A549 cells treated with PMA 125ng/ml 30' and HT29 cells treated with serum 20% 15', using PKD1/2/3/PKC mu (Phospho-Ser738+Ser742) Antibody. The lane on the right is blocked with the phospho peptide.

Contact information

Orders: order@immunoway.com
 Support: tech@immunoway.com
 Telephone: 877-594-3616 (Toll Free), 408-747-0185
 Website: <http://www.immunoway.com>
 Address: 2200 Ringwood Ave San Jose, CA 95131 USA



Please scan the QR code to access additional product information:
PKD1/2/3 (Phospho Ser738/742) Rabbit pAb

