

## Pin1 (Phospho Ser16) Rabbit pAb

CatalogNo: YP0702 Orthogonal Validated 

### Key Features

#### Host Species

- Rabbit

#### Reactivity

- Human, Mouse, Rat, Monkey

#### Applications

- WB, IHC, IF, ELISA

#### MW

- 18kD (Observed)

#### Isotype

- IgG

### Storage

**Storage\*** -15°C to -25°C/1 year (Do not lower than -25°C)

**Formulation** Liquid in PBS containing 50% glycerol, 0.5% BSA and 0.02% sodium azide.

### Recommended Dilution Ratios

**WB 1:500-1:2000**

**IHC 1:100-1:300**

**ELISA 1:20000**

**IF 1:50-200**

### Basic Information

**Clonality** Polyclonal

### Immunogen Information

**Immunogen** The antiserum was produced against synthesized peptide derived from human Pin1 around the phosphorylation site of Ser16. AA range: 1-50

**Specificity**

Phospho-Pin1 (S16) Polyclonal Antibody detects endogenous levels of Pin1 protein only when phosphorylated at S16. The name of modified sites may be influenced by many factors, such as species (the modified site was not originally found in human samples) and the change of protein sequence (the previous protein sequence is incomplete, and the protein sequence may be prolonged with the development of protein sequencing technology). When naming, we will use the "numbers" in historical reference to keep the sites consistent with the reports. The antibody binds to the following modification sequence (lowercase letters are modification sites):RM<sub>s</sub>RS

**| Target Information**

**Gene name** PIN1

**Protein Name** Peptidyl-prolyl cis-trans isomerase NIMA-interacting 1

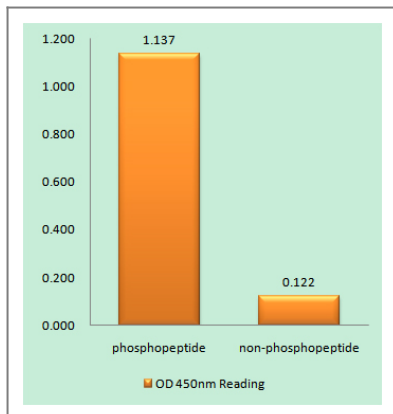
Organism	Gene ID	UniProt ID
Human	<a href="#">5300;</a>	<a href="#">Q13526;</a>
Mouse	<a href="#">23988;</a>	<a href="#">Q9QUR7;</a>

**Cellular Localization** Nucleus . Nucleus speckle . Cytoplasm . Colocalizes with NEK6 in the nucleus (PubMed:16476580). Mainly localized in the nucleus but phosphorylation at Ser-71 by DAPK1 results in inhibition of its nuclear localization (PubMed:21497122). .

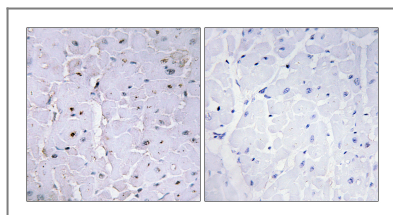
**Tissue specificity** Expressed in immune cells in the lung (at protein level) (PubMed:29686383). The phosphorylated form at Ser-71 is expressed in normal breast tissue cells but not in breast cancer cells.

**Function** Catalytic activity:Peptidylproline (omega=180) = peptidylproline (omega=0).,Domain:The WW domain is required for the interaction with STIL and MPHOSPH1.,Function:Essential PPIase that regulates mitosis presumably by interacting with NIMA and attenuating its mitosis-promoting activity. Displays a preference for an acidic residue N-terminal to the isomerized proline bond. Catalyzing pSer/Thr-Pro cis/trans isomerizations.,PTM:Phosphorylated upon DNA damage, probably by ATM or ATR.,similarity:Contains 1 PpiC domain.,similarity:Contains 1 WW domain.,subunit:Interacts with STIL (By similarity). Interacts with MPHOSPH1.,

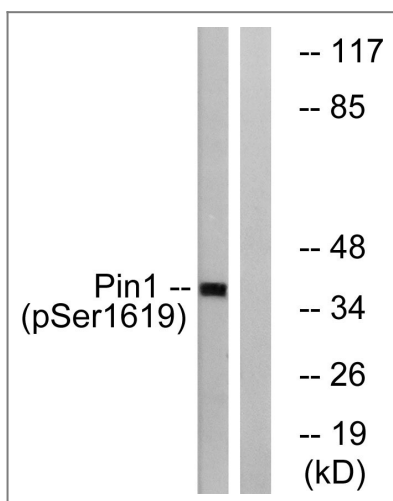
**| Validation Data**



Enzyme-Linked Immunosorbent Assay (Phospho-ELISA) for Immunogen Phosphopeptide (Phospho-left) and Non-Phosphopeptide (Phospho-right), using Pin1 (Phospho-Ser16) Antibody



Immunohistochemistry analysis of paraffin-embedded human heart, using Pin1 (Phospho-Ser16) Antibody. The picture on the right is blocked with the phospho peptide.



Western blot analysis of lysates from COS7 cells treated with insulin 0.01U/ml 15', using Pin1 (Phospho-Ser16) Antibody. The lane on the right is blocked with the phospho peptide.

## Contact information

Orders: [order@immunoway.com](mailto:order@immunoway.com)  
 Support: [tech@immunoway.com](mailto:tech@immunoway.com)  
 Telephone: 877-594-3616 (Toll Free), 408-747-0185  
 Website: <http://www.immunoway.com>  
 Address: 2200 Ringwood Ave San Jose, CA 95131 USA



Please scan the QR code to access additional product information:  
**Pin1 (Phospho Ser16) Rabbit pAb**