

Cyclin B1 (Phospho Ser147) Rabbit pAb

CatalogNo: YP0691 Orthogonal Validated 

Key Features

Host Species

- Rabbit

Reactivity

- Human, Mouse, Rat

Applications

- WB, IHC, IF, ELISA

MW

- 60kD (Observed)

Isotype

- IgG

Storage

Storage* -15°C to -25°C/1 year (Do not lower than -25°C)

Formulation Liquid in PBS containing 50% glycerol, 0.5% BSA and 0.02% sodium azide.

Recommended Dilution Ratios

WB 1:500-1:2000

IHC 1:100-1:300

ELISA 1:10000

IF 1:50-200

Basic Information

Clonality Polyclonal

Immunogen Information

Immunogen The antiserum was produced against synthesized peptide derived from human Cyclin B1 around the phosphorylation site of Ser147. AA range:121-170

Specificity

Phospho-Cyclin B1 (S147) Polyclonal Antibody detects endogenous levels of Cyclin B1 protein only when phosphorylated at S147. The name of modified sites may be influenced by many factors, such as species (the modified site was not originally found in human samples) and the change of protein sequence (the previous protein sequence is incomplete, and the protein sequence may be prolonged with the development of protein sequencing technology). When naming, we will use the "numbers" in historical reference to keep the sites consistent with the reports. The antibody binds to the following modification sequence (lowercase letters are modification sites):AFsDV

| Target Information

Gene name CCNB1 CCNB

Protein Name G2/mitotic-specific cyclin-B1

Organism	Gene ID	UniProt ID
Human	891 ;	P14635 ;
Mouse	268697 ;	P24860 ;
Rat	25203 ;	P30277 ;

Cellular Localization

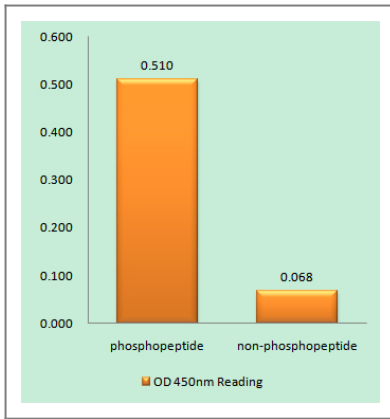
Cytoplasm. Nucleus. Cytoplasm, cytoskeleton, microtubule organizing center, centrosome.

Tissue specificity Breast adenocarcinoma,Lung,Placenta,

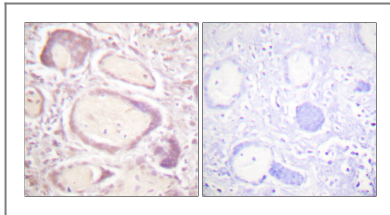
Function

developmental stage:Accumulates steadily during G2 and is abruptly destroyed at mitosis.,Function:Essential for the control of the cell cycle at the G2/M (mitosis) transition.,PTM:Ubiquitinated by the SCF(NIPA) complex during interphase, leading to its destruction. Not ubiquitinated during G2/M phases.,similarity:Belongs to the cyclin family.,similarity:Belongs to the cyclin family. Cyclin AB subfamily.,subunit:Interacts with the CDC2 protein kinase to form a serine/threonine kinase holoenzyme complex also known as maturation promoting factor (MPF). The cyclin subunit imparts substrate specificity to the complex. Binds HEI10. Interacts with catalytically active RALBP1 and CDC2 during mitosis to form an endocytotic complex during interphase.,

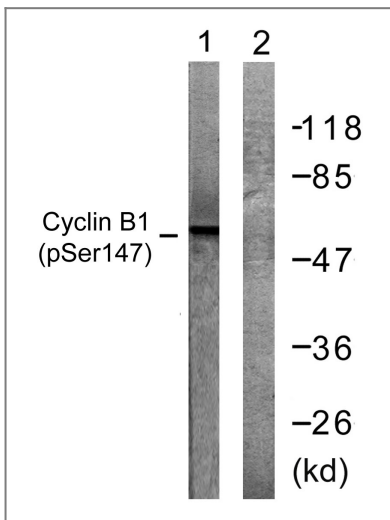
| Validation Data



Enzyme-Linked Immunosorbent Assay (Phospho-ELISA) for Immunogen Phosphopeptide (Phospho-left) and Non-Phosphopeptide (Phospho-right), using Cyclin B1 (Phospho-Ser147) Antibody



Immunohistochemistry analysis of paraffin-embedded human placenta, using Cyclin B1 (Phospho-Ser147) Antibody. The picture on the right is blocked with the phospho peptide.



Western blot analysis of lysates from Jurkat cells treated with UV 15', using Cyclin B1 (Phospho-Ser147) Antibody. The lane on the right is blocked with the phospho peptide.

Contact information

Orders: order@immunoway.com
 Support: tech@immunoway.com
 Telephone: 877-594-3616 (Toll Free), 408-747-0185
 Website: <http://www.immunoway.com>
 Address: 2200 Ringwood Ave San Jose, CA 95131 USA



Please scan the QR code to access additional product information:
Cyclin B1 (Phospho Ser147) Rabbit pAb