

## Cdc25C (Phospho Thr48) Rabbit pAb

CatalogNo: YP0688

### Key Features

**Host Species**

- Rabbit

**Reactivity**

- Human,Rat,Mouse,

**Applications**

- WB,IHC,IF,ELISA

**MW**

- 80kD (Observed)

**Isotype**

- IgG

### Recommended Dilution Ratios

**WB 1:500-1:2000****IHC 1:100-1:300****ELISA 1:5000****IF 1:50-200**

### Storage

**Storage\***

-15°C to -25°C/1 year(Do not lower than -25°C)

**Formulation**

Liquid in PBS containing 50% glycerol, 0.5% BSA and 0.02% sodium azide.

### Basic Information

**Clonality**

Polyclonal

### Immunogen Information

**Immunogen**

The antiserum was produced against synthesized peptide derived from human CDC25C around the phosphorylation site of Thr48. AA range:14-63

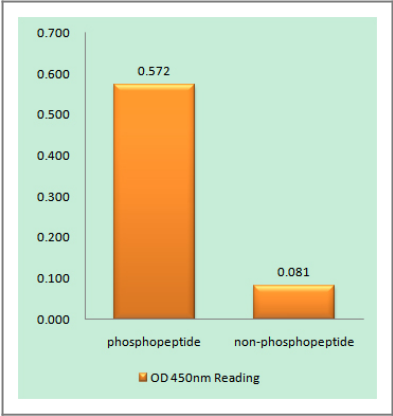
**Specificity**

Phospho-Cdc25C (T48) Polyclonal Antibody detects endogenous levels of Cdc25C protein only when phosphorylated at T48. The name of modified sites may be influenced by many factors, such as species (the modified site was not originally found in human samples) and the change of protein sequence (the previous protein sequence is incomplete, and the protein sequence may be prolonged with the development of protein sequencing technology). When naming, we will use the "numbers" in historical reference to keep the sites consistent with the reports. The antibody binds to the following modification sequence (lowercase letters are modification sites):PRtPV

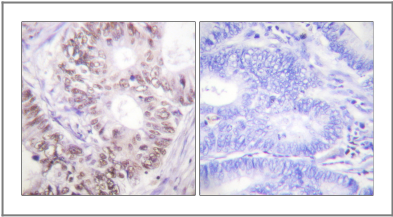
## Target Information

Gene name	CDC25C		
Protein Name	M-phase inducer phosphatase 3		
	Organism	Gene ID	UniProt ID
	Human	<a href="#">995</a> ;	<a href="#">P30307</a> ;
	Mouse		<a href="#">P48967</a> ;
Cellular Localization	Nucleus .		
Tissue specificity	Colon carcinoma,Epithelium,Skin,Testis,		
Function	Catalytic activity:Protein tyrosine phosphate + H(2)O = protein tyrosine + phosphate.,developmental stage:Expressed predominantly in G2 phase.,Function:Functions as a dosage-dependent inducer in mitotic control. It is a tyrosine protein phosphatase required for progression of the cell cycle. It directly dephosphorylates CDC2 and activate its kinase activity.,PTM:Phosphorylated by CHK1 on Ser-216. This phosphorylation creates a binding site for 14-3-3 protein and inhibits the phosphatase.,similarity:Belongs to the MPI phosphatase family.,similarity:Contains 1 rhodanese domain.,subunit:Interacts with HIV-1 Vpr, thereby inactivating CDC25C phosphatase activity.,		

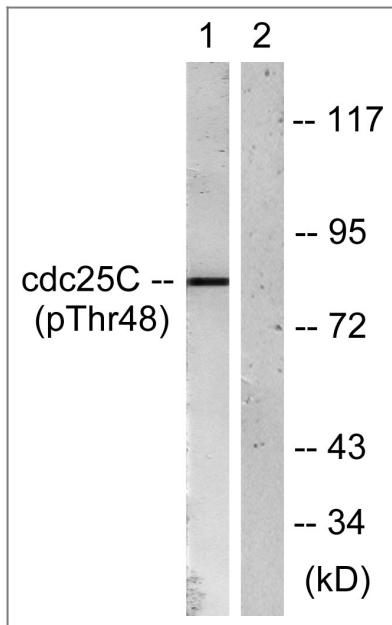
## Validation Data



Enzyme-Linked Immunosorbent Assay (Phospho-ELISA) for Immunogen Phosphopeptide (Phospho-left) and Non-Phosphopeptide (Phospho-right), using CDC25C (Phospho-Thr48) Antibody



Immunohistochemistry analysis of paraffin-embedded human colon carcinoma, using CDC25C (Phospho-Thr48) Antibody. The picture on the right is blocked with the phospho peptide.



Western blot analysis of lysates from RAW264.7 cells, using CDC25C (Phospho-Thr48) Antibody. The lane on the right is blocked with the phosphopeptide.

## Contact information

Orders: [order@immunoway.com](mailto:order@immunoway.com)  
 Support: [tech@immunoway.com](mailto:tech@immunoway.com)  
 Telephone: 877-594-3616 (Toll Free), 408-747-0185  
 Website: <http://www.immunoway.com>  
 Address: 2200 Ringwood Ave San Jose, CA 95131 USA



Please scan the QR code to access additional product information:  
**Cdc25C (Phospho Thr48) Rabbit pAb**

For Research Use Only. Not for Use in Diagnostic Procedures.

[Antibody](#) | [ELISA Kits](#) | [Protein](#) | [Reagents](#)