

# ATP-citrate Lyase (Phospho Ser455) Rabbit pAb

CatalogNo: YP0686 **Orthogonal Validated** 

## Key Features

### Host Species

- Rabbit

### Reactivity

- Human, Mouse, Rat, Monkey

### Applications

- WB, IHC, IF, ELISA

### MW

- 125kD (Observed)

### Isotype

- IgG

## Storage

**Storage\*** -15°C to -25°C/1 year (Do not lower than -25°C)**Formulation** Liquid in PBS containing 50% glycerol, 0.5% BSA and 0.02% sodium azide.

## Recommended Dilution Ratios

**WB 1:500-1:2000****IHC 1:100-1:300****ELISA 1:10000****IF 1:50-200**

## Basic Information

**Clonality** Polyclonal

## Immunogen Information

**Immunogen** The antiserum was produced against synthesized peptide derived from human ATP-Citrate Lyase around the phosphorylation site of Ser454. AA range:420-469

## Specificity

Phospho-ATP-citrate Lyase (S455) Polyclonal Antibody detects endogenous levels of ATP-citrate Lyase protein only when phosphorylated at S455. The name of modified sites may be influenced by many factors, such as species (the modified site was not originally found in human samples) and the change of protein sequence (the previous protein sequence is incomplete, and the protein sequence may be prolonged with the development of protein sequencing technology). When naming, we will use the "numbers" in historical reference to keep the sites consistent with the reports. The antibody binds to the following modification sequence (lowercase letters are modification sites):TAsFS

---

## | Target Information

**Gene name** ACLY

**Protein Name** ATP-citrate synthase

Organism	Gene ID	UniProt ID
Human	<a href="#">47;</a>	<a href="#">P53396;</a>
Mouse	<a href="#">104112;</a>	<a href="#">Q91V92;</a>
Rat	<a href="#">24159;</a>	<a href="#">P16638;</a>

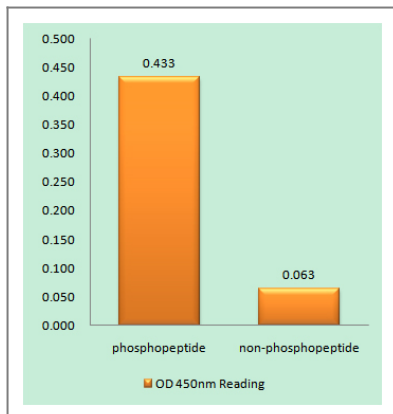
**Cellular Localization** Cytoplasm, cytosol .

**Tissue specificity** Brain,Epithelium,Hippocampus,Liver,Lymph,Platelet,

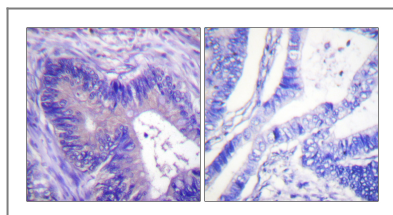
**Function** Catalytic activity:ADP + phosphate + acetyl-CoA + oxaloacetate = ATP + citrate + CoA.,Function:ATP citrate-lyase is the primary enzyme responsible for the synthesis of cytosolic acetyl-CoA in many tissues. Has a central role in de novo lipid synthesis. In nervous tissue it may be involved in the biosynthesis of acetylcholine.,similarity:In the C-terminal section; belongs to the succinate/malate CoA ligase alpha subunit family.,similarity:In the N-terminal section; belongs to the succinate/malate CoA ligase beta subunit family.,subunit:Homotetramer.,

---

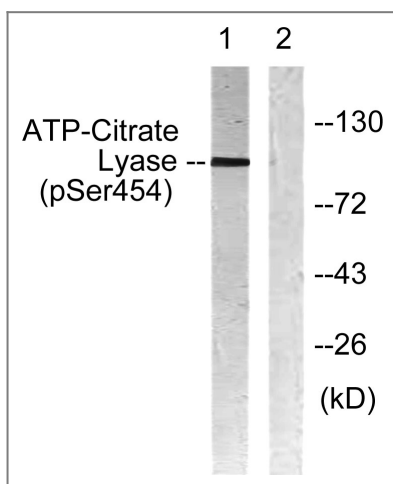
## | Validation Data



Enzyme-Linked Immunosorbent Assay (Phospho-ELISA) for Immunogen Phosphopeptide (Phospho-left) and Non-Phosphopeptide (Phospho-right), using ATP-Citrate Lyase (Phospho-Ser454) Antibody



Immunohistochemistry analysis of paraffin-embedded human colon carcinoma, using ATP-Citrate Lyase (Phospho-Ser454) Antibody. The picture on the right is blocked with the phospho peptide.



Western blot analysis of lysates from COS7 cells treated with Calyculin 50nM 30', using ATP-Citrate Lyase (Phospho-Ser454) Antibody. The lane on the right is blocked with the phospho peptide.

## Contact information

Orders: [order@immunoway.com](mailto:order@immunoway.com)  
 Support: [tech@immunoway.com](mailto:tech@immunoway.com)  
 Telephone: 877-594-3616 (Toll Free), 408-747-0185  
 Website: <http://www.immunoway.com>  
 Address: 2200 Ringwood Ave San Jose, CA 95131 USA



Please scan the QR code to access additional product information:  
**ATP-citrate Lyase (Phospho Ser455) Rabbit pAb**