

## ZAP-70 (Phospho Tyr315) Rabbit pAb

CatalogNo: YP0682

Orthogonal Validated 

### Key Features

#### Host Species

- Rabbit

#### Reactivity

- Human, Mouse

#### Applications

- WB, IHC, IF, ELISA

#### MW

- 60kD (Observed)

#### Isotype

- IgG

### Recommended Dilution Ratios

**WB 1:500-1:2000****IHC 1:100-1:300****ELISA 1:10000****IF 1:50-200**

### Storage

**Storage\*** -15°C to -25°C/1 year (Do not lower than -25°C)**Formulation** Liquid in PBS containing 50% glycerol, 0.5% BSA and 0.02% sodium azide.

### Basic Information

**Clonality** Polyclonal

### Immunogen Information

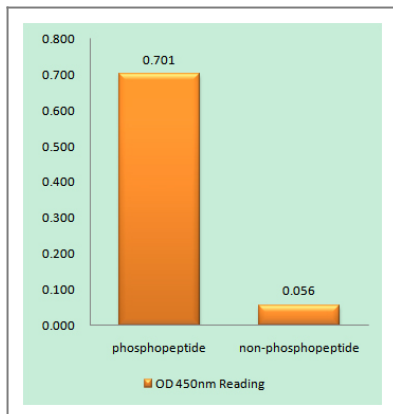
**Immunogen** The antiserum was produced against synthesized peptide derived from human ZAP-70 around the phosphorylation site of Tyr315. AA range: 281-330

**Specificity** Phospho-ZAP-70 (Y315) Polyclonal Antibody detects endogenous levels of ZAP-70 protein only when phosphorylated at Y315. The name of modified sites may be influenced by many factors, such as species (the modified site was not originally found in human samples) and the change of protein sequence (the previous protein sequence is incomplete, and the protein sequence may be prolonged with the development of protein sequencing technology). When naming, we will use the "numbers" in historical reference to keep the sites consistent with the reports. The antibody binds to the following modification sequence (lowercase letters are modification sites):SVyES

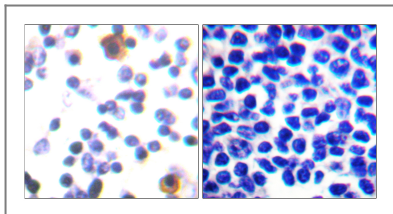
## | Target Information

Gene name	ZAP70		
Protein Name	Tyrosine-protein kinase ZAP-70		
	Organism	Gene ID	UniProt ID
	Human	<a href="#">7535</a> ;	<a href="#">P43403</a> ;
	Mouse	<a href="#">22637</a> ;	<a href="#">P43404</a> ;
Cellular Localization	Cytoplasm . Cell membrane ; Peripheral membrane protein . In quiescent T-lymphocytes, it is cytoplasmic. Upon TCR activation, it is recruited at the plasma membrane by interacting with CD247/CD3Z. Colocalizes together with RHOH in the immunological synapse. RHOH is required for its proper localization to the cell membrane and cytoskeleton fractions in the thymocytes (By similarity). .		
Tissue specificity	Expressed in T- and natural killer cells. Also present in early thymocytes and pro/pre B-cells.		
Function	Catalytic activity:ATP + a [protein]-L-tyrosine = ADP + a [protein]-L-tyrosine phosphate.,Disease:Defects in ZAP70 are the cause of selective T-cell defect (STD) [MIM:176947]. STD is an autosomal recessive form of severe combined immunodeficiency characterized by a selective absence of CD8-type T-cells.,Domain:The SH2 domain binds to the phosphorylated tyrosine-based activation motif (TAM) of CD3Z.,Function:Plays a role in T-cell development and lymphocyte activation. Essential for TCR-mediated IL-2 production. Isoform 1 induces TCR-mediated signal transduction, isoform 2 does not.,online information:ZAP70 mutation db,PTM:Phosphorylated on tyrosine residues upon T-cell antigen receptor (TCR) stimulation. Tyr-319 phosphorylation is essential for full activity.,similarity:Belongs to the protein kinase superfamily. Tyr protein kinase family. SYK/ZAP-70 subfamily.,similarity:Contains 1 protein kinase domain.,similarity:Contains 2 SH2 domains.,subcellular location:After antigen stimulation, isoform 1 concentrates at the immunological synapse and isoform 2 remains cytoplasmic.,subunit:Interacts with SLA2 when it is phosphorylated. Interacts with CD3Z and with phosphorylated NFAM1. Interacts with CBLB (By similarity). Interacts with CBL and SLA when it is phosphorylated. The association with SLA (or SLA2) and CBL probably leads to its destruction. Interacts with SHB. Interacts with DEF6 (By similarity). Interacts with FCRL3.,tissue specificity:Expressed in T- and natural killer cells.,		

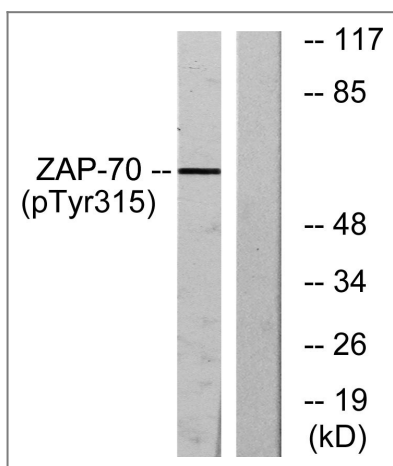
## | Validation Data



Enzyme-Linked Immunosorbent Assay (Phospho-ELISA) for Immunogen Phosphopeptide (Phospho-left) and Non-Phosphopeptide (Phospho-right), using ZAP-70 (Phospho-Tyr315) Antibody



Immunohistochemistry analysis of paraffin-embedded human lymph node, using ZAP-70 (Phospho-Tyr315) Antibody. The picture on the right is blocked with the phospho peptide.



Western blot analysis of lysates from Jurkat cells treated with Ca<sup>+</sup> 40nM 30', using ZAP-70 (Phospho-Tyr315) Antibody. The lane on the right is blocked with the phospho peptide.

## Contact information

Orders: [order@immunoway.com](mailto:order@immunoway.com)  
 Support: [tech@immunoway.com](mailto:tech@immunoway.com)  
 Telephone: 877-594-3616 (Toll Free), 408-747-0185  
 Website: <http://www.immunoway.com>  
 Address: 2200 Ringwood Ave San Jose, CA 95131 USA



Please scan the QR code to access additional product information:  
**ZAP-70 (Phospho-Tyr315) Rabbit pAb**

For Research Use Only. Not for Use in Diagnostic Procedures.

[Antibody](#) | [ELISA Kits](#) | [Protein](#) | [Reagents](#)