

WAVE1 (Phospho Tyr125) Rabbit pAb

CatalogNo: YP0680 Orthogonal Validated 

Key Features

Host Species

- Rabbit

Reactivity

- Human, Mouse, Rat

Applications

- WB, IHC, IF, ELISA

MW

- 70kD (Observed)

Isotype

- IgG

Storage

Storage* -15°C to -25°C/1 year (Do not lower than -25°C)

Formulation Liquid in PBS containing 50% glycerol, 0.5% BSA and 0.02% sodium azide.

Recommended Dilution Ratios

WB 1:500-1:2000

IHC 1:100-1:300

IF 1:200-1:1000

ELISA 1:5000

Not yet tested in other applications.

Basic Information

Clonality Polyclonal

Immunogen Information

Immunogen The antiserum was produced against synthesized peptide derived from human WAVE1 around the phosphorylation site of Tyr125. AA range:91-140

Specificity

Phospho-WAVE1 (Y125) Polyclonal Antibody detects endogenous levels of WAVE1 protein only when phosphorylated at Y125. The name of modified sites may be influenced by many factors, such as species (the modified site was not originally found in human samples) and the change of protein sequence (the previous protein sequence is incomplete, and the protein sequence may be prolonged with the development of protein sequencing technology). When naming, we will use the "numbers" in historical reference to keep the sites consistent with the reports. The antibody binds to the following modification sequence (lowercase letters are modification sites):ETyDV

Target Information

Gene name WASF1

Protein Name Wiskott-Aldrich syndrome protein family member 1

Organism	Gene ID	UniProt ID
Human	8936 ;	Q92558 ;
Mouse	83767 ;	Q8R5H6 ;
Rat	294568 ;	Q5BJU7 ;

Cellular Localization

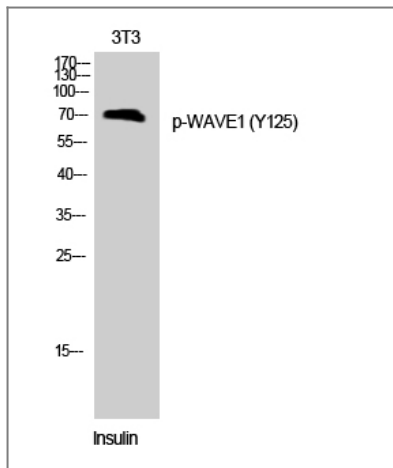
Cytoplasm, cytoskeleton . Cell junction, synapse . Cell junction, focal adhesion . Dot-like pattern in the cytoplasm. Concentrated in Rac-regulated membrane-ruffling areas (PubMed:9889097). Partial translocation to focal adhesion sites might be mediated by interaction with SORBS2 (PubMed:18559503). In neurons, colocalizes with activated NTRK2 after BDNF addition in endocytic sites through the association with TMEM108 (By similarity).

Tissue specificity Highly expressed in brain. Lowly expressed in testis, ovary, colon, kidney, pancreas, thymus, small intestine and peripheral blood.

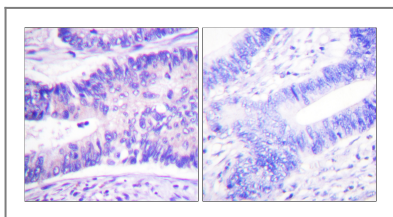
Function

Domain: Binds the Arp2/3 complex through the C-terminal region and actin through verprolin homology (VPH) domain. Function: Downstream effector molecules involved in the transmission of signals from tyrosine kinase receptors and small GTPases to the actin cytoskeleton. Similarity: Belongs to the SCAR/WAVE family. Similarity: Contains 1 WH2 domain. Subcellular location: Dot-like pattern in the cytoplasm. Concentrated in Rac-regulated membrane-ruffling areas. Subunit: Component of the WAVE1 complex composed of ABI2, CYFIP2, C3orf10/HSPC300, NCKAP1 and WASF1/WAVE1. CYFIP2 binds to activated RAC1 which causes the complex to dissociate, releasing activated WASF1. The complex can also be activated by NCK1 (By similarity). Binds actin and the Arp2/3 complex. Interacts with BAIAP2. Tissue specificity: Highly expressed in brain. Lowly expressed in testis, ovary, colon, kidney, pancreas, thymus, small intestine and peripheral blood.

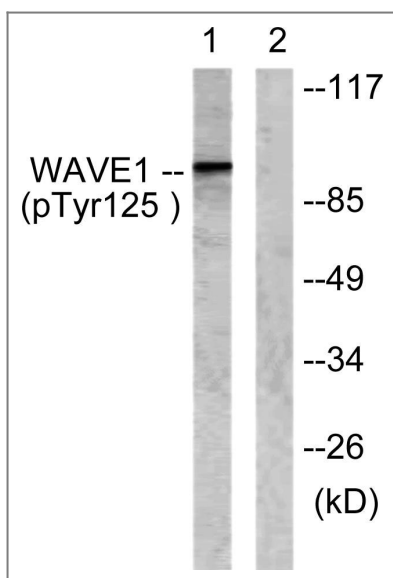
Validation Data



Western Blot analysis of 3T3 cells using Phospho-WAVE1 (Y125) Polyclonal Antibody



Immunohistochemistry analysis of paraffin-embedded human colon carcinoma, using WAVE1 (Phospho-Tyr125) Antibody. The picture on the right is blocked with the phospho peptide.



Western blot analysis of lysates from NIH/3T3 cells treated with Insulin 0.01U/ml 15', using WAVE1 (Phospho-Tyr125) Antibody. The lane on the right is blocked with the phospho peptide.

Contact information

Orders: order@immunoway.com
 Support: tech@immunoway.com
 Telephone: 877-594-3616 (Toll Free), 408-747-0185
 Website: <http://www.immunoway.com>
 Address: 2200 Ringwood Ave San Jose, CA 95131 USA



Please scan the QR code to access additional product information:
WAVE1 (Phospho Tyr125) Rabbit pAb