

## TH (Phospho Ser8) Rabbit pAb

CatalogNo: YP0677 **Orthogonal Validated** 

### Key Features

#### Host Species

- Rabbit

#### Reactivity

- Rat

#### Applications

- WB,IHC,IF,ELISA

#### MW

- 62kD (Observed)

#### Isotype

- IgG

### Storage

**Storage\*** -15°C to -25°C/1 year(Do not lower than -25°C)**Formulation** Liquid in PBS containing 50% glycerol, 0.5% BSA and 0.02% sodium azide.

### Recommended Dilution Ratios

**WB 1:500-1:2000****IHC 1:100-1:300****ELISA 1:5000****IF 1:50-200**

### Basic Information

**Clonality** Polyclonal

### Immunogen Information

**Immunogen** The antiserum was produced against synthesized peptide derived from mouse Tyrosine Hydroxylase around the phosphorylation site of Ser8. AA range:2-51

## Specificity

Phospho-TH (S8) Polyclonal Antibody detects endogenous levels of TH protein only when phosphorylated at S8. The name of modified sites may be influenced by many factors, such as species (the modified site was not originally found in human samples) and the change of protein sequence (the previous protein sequence is incomplete, and the protein sequence may be prolonged with the development of protein sequencing technology). When naming, we will use the "numbers" in historical reference to keep the sites consistent with the reports. The antibody binds to the following modification sequence (lowercase letters are modification sites):APsPQ

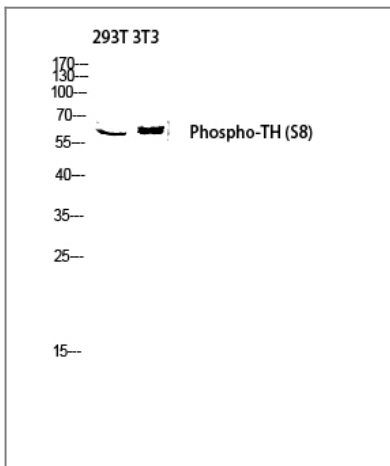
## Target Information

**Gene name** TH

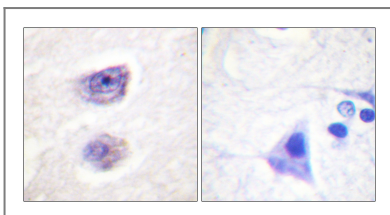
**Protein Name** Tyrosine 3-monoxygenase

Organism	Gene ID	UniProt ID
Human	<a href="#">7054;</a>	<a href="#">P07101;</a>
Rat	<a href="#">25085;</a>	<a href="#">P04177;</a>

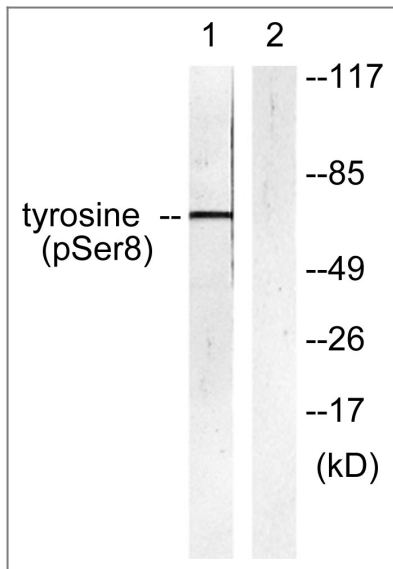
## Validation Data



Western blot analysis of 293T 3T3 lysis using Phospho-TH (S8) antibody. Antibody was diluted at 1:1000



Immunohistochemistry analysis of paraffin-embedded human brain, using Tyrosine Hydroxylase (Phospho-Ser8) Antibody. The picture on the right is blocked with the phospho peptide.



Western blot analysis of lysates from HepG2 cells treated with Anisomycin 25ug/ml 30', using Tyrosine Hydroxylase (Phospho-Ser8) Antibody. The lane on the right is blocked with the phospho peptide.

## Contact information

Orders: [order@immunoway.com](mailto:order@immunoway.com)  
Support: [tech@immunoway.com](mailto:tech@immunoway.com)  
Telephone: 877-594-3616 (Toll Free), 408-747-0185  
Website: <http://www.immunoway.com>  
Address: 2200 Ringwood Ave San Jose, CA 95131 USA



Please scan the QR code to access additional product information:  
**TH (Phospho Ser8)**  
**Rabbit pAb**

For Research Use Only. Not for Use in Diagnostic Procedures.

[Antibody](#) | [ELISA Kits](#) | [Protein](#) | [Reagents](#)