

Troponin I-C (Phospho Ser22/23) Rabbit pAb

CatalogNo: YP0675

Key Features

Host Species

- Rabbit

Reactivity

- Human, Mouse, Rat

Applications

- WB, IHC, IF, ELISA

MW

- 28kD (Observed)

Isotype

- IgG

Storage

Storage* -15°C to -25°C/1 year (Do not lower than -25°C)

Formulation Liquid in PBS containing 50% glycerol, 0.5% BSA and 0.02% sodium azide.

Recommended Dilution Ratios

WB 1:500-1:2000

IHC 1:100-1:300

ELISA 1:20000

IF 1:50-200

Basic Information

Clonality Polyclonal

Immunogen Information

Immunogen The antiserum was produced against synthesized peptide derived from mouse TNNI3 around the phosphorylation site of Ser22 and Ser23. AA range:5-54

Specificity

Detects endogenous levels of Trk A only when phosphorylated at Human:Y680+Y681, Mouse:Y683+Y684, Rat:Y683+Y684, and phosphorylated at one sites. The name of modified sites may be influenced by many factors, such as species (the modified site was not originally found in human samples) and the change of protein sequence (the previous protein sequence is incomplete, and the protein sequence may be prolonged with the development of protein sequencing technology). When naming, we will use the "numbers" in historical reference to keep the sites consistent with the reports. The antibody binds to the following modification sequence (lowercase letters are modification sites):RRssA

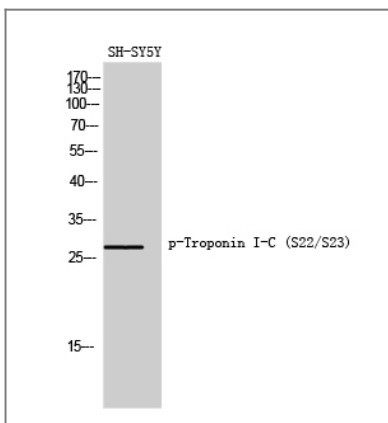
Target Information

Gene name Tnni3

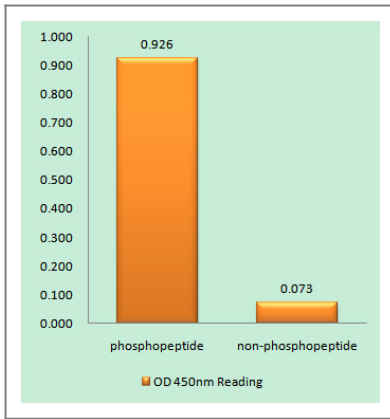
Protein Name Troponin I cardiac muscle

Organism	Gene ID	UniProt ID
Human	7137;	P19429;
Mouse	21954;	P48787;
Rat	29248;	P23693;

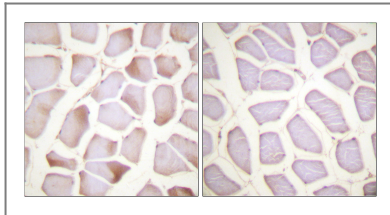
Validation Data



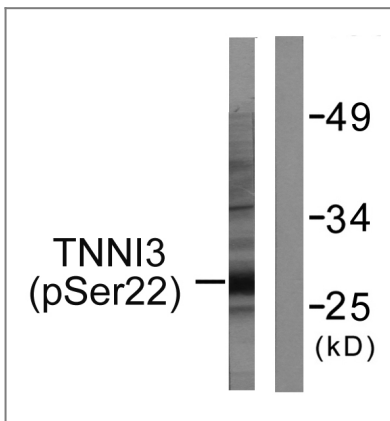
Western Blot analysis of SH-SY5Y cells using Phospho-Troponin I-C (S22/S23) Polyclonal Antibody diluted at 1:1000



Enzyme-Linked Immunosorbent Assay (Phospho-ELISA) for Immunogen Phosphopeptide (Phospho-left) and Non-Phosphopeptide (Phospho-right), using TNNI3 (Phospho-Ser22+Ser23) Antibody



Immunohistochemistry analysis of paraffin-embedded human skeletal muscle, using TNNI3 (Phospho-Ser22+Ser23) Antibody. The picture on the right is blocked with the phospho peptide.



Western blot analysis of lysates from mouse heart, using TNNI3 (Phospho-Ser22+Ser23) Antibody. The lane on the right is blocked with the phospho peptide.

Contact information

Orders: order@immunoway.com
 Support: tech@immunoway.com
 Telephone: 877-594-3616 (Toll Free), 408-747-0185
 Website: <http://www.immunoway.com>
 Address: 2200 Ringwood Ave San Jose, CA 95131 USA



Please scan the QR code to access additional product information:
**Troponin I-C
 (Phospho Ser22/23)
 Rabbit pAb**