

FGFR1 (Phospho Tyr766) Rabbit pAb

CatalogNo: YP0650

Orthogonal Validated 

Key Features

Host Species

- Rabbit

Reactivity

- Human, Mouse, Rat

Applications

- WB, IHC, IF, ELISA

MW

- 120kD (Calculated)
full length 120-140kD, FOP-FGFR1
90kD (Observed)

Isotype

- IgG

Recommended Dilution Ratios

WB 1:500-1:2000**IHC 1:100-1:300****ELISA 1:5000****IF 1:50-200**

Storage

Storage* -15°C to -25°C/1 year (Do not lower than -25°C)**Formulation** Liquid in PBS containing 50% glycerol, 0.5% BSA and 0.02% sodium azide.

Basic Information

Clonality Polyclonal

Immunogen Information

Immunogen The antiserum was produced against synthesized peptide derived from human FGFR1 around the phosphorylation site of Tyr766. AA range: 736-785

Specificity Phospho-Flg (Y766) Polyclonal Antibody detects endogenous levels of Flg protein only when phosphorylated at Y766. The name of modified sites may be influenced by many factors, such as species (the modified site was not originally found in human samples) and the change of protein sequence (the previous protein sequence is incomplete, and the protein sequence may be prolonged with the development of protein sequencing technology). When naming, we will use the "numbers" in historical reference to keep the sites consistent with the reports. The antibody binds to the following modification sequence (lowercase letters are modification sites):QEYLD

Target Information

Gene name FGFR1 BFGFR CEK FGFBR FLG FLT2 HBGFR

Protein Name Fibroblast growth factor receptor 1

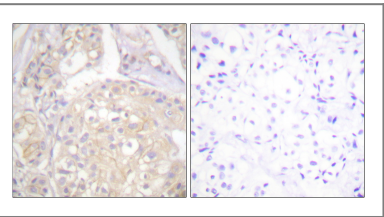
Organism	Gene ID	UniProt ID
Human	2260;	P11362;
Mouse	14182;	P16092;
Rat	79114;	Q04589;

Cellular Localization Cell membrane; Single-pass type I membrane protein. Nucleus. Cytoplasm, cytosol. Cytoplasmic vesicle. After ligand binding, both receptor and ligand are rapidly internalized. Can translocate to the nucleus after internalization, or by translocation from the endoplasmic reticulum or Golgi apparatus to the cytosol, and from there to the nucleus.

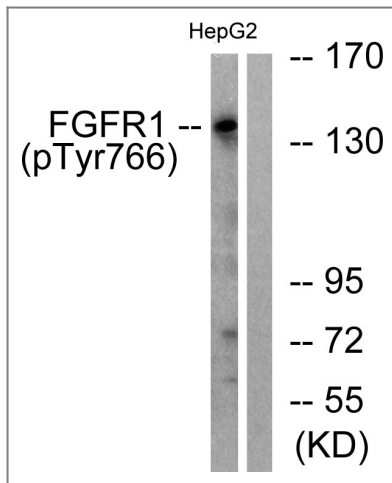
Tissue specificity Detected in astrocytoma, neuroblastoma and adrenal cortex cell lines. Some isoforms are detected in foreskin fibroblast cell lines, however isoform 17, isoform 18 and isoform 19 are not detected in these cells.

Function Receptor for basic fibroblast growth factor. Receptor for FGF23 in the presence of KL (By similarity). A shorter form of the receptor could be a receptor for FGF1 (aFGF).

Validation Data



Immunohistochemistry analysis of paraffin-embedded human breast carcinoma, using FGFR1 (Phospho-Tyr766) Antibody. The picture on the right is blocked with the phospho peptide.



Western blot analysis of lysates from HepG2 cells treated with EGF 200ng/ml 30', using FGFR1 (Phospho-Tyr766) Antibody. The lane on the right is blocked with the phospho peptide.

Contact information

Orders: order@immunoway.com
 Support: tech@immunoway.com
 Telephone: 877-594-3616 (Toll Free), 408-747-0185
 Website: <http://www.immunoway.com>
 Address: 2200 Ringwood Ave San Jose, CA 95131 USA



Please scan the QR code to access additional product information:
FGFR1 (Phospho Tyr766) Rabbit pAb

For Research Use Only. Not for Use in Diagnostic Procedures.

[Antibody](#) | [ELISA Kits](#) | [Protein](#) | [Reagents](#)