

IL-3R β (Phospho Tyr593) Rabbit pAb

CatalogNo: YP0639 **Orthogonal Validated** 

Key Features

Host Species

- Rabbit

Reactivity

- Human, Mouse, Rat

Applications

- WB, IHC, IF, ELISA

MW

- 125kD (Observed)

Isotype

- IgG

Storage

Storage* -15°C to -25°C/1 year (Do not lower than -25°C)**Formulation** Liquid in PBS containing 50% glycerol, 0.5% BSA and 0.02% sodium azide.

Recommended Dilution Ratios

WB 1:500-1:2000**IHC 1:100-1:300****ELISA 1:10000****IF 1:50-200**

Basic Information

Clonality Polyclonal

Immunogen Information

Immunogen The antiserum was produced against synthesized peptide derived from human IL-3R beta around the phosphorylation site of Tyr593. AA range:559-608

Specificity

Phospho-IL-3R β (Y593) Polyclonal Antibody detects endogenous levels of IL-3R β protein only when phosphorylated at Y593. The name of modified sites may be influenced by many factors, such as species (the modified site was not originally found in human samples) and the change of protein sequence (the previous protein sequence is incomplete, and the protein sequence may be prolonged with the development of protein sequencing technology). When naming, we will use the "numbers" in historical reference to keep the sites consistent with the reports. The antibody binds to the following modification sequence (lowercase letters are modification sites):GPyLG

Target Information

Gene name CSF2RB IL3RB IL5RB

Protein Name Cytokine receptor common subunit beta

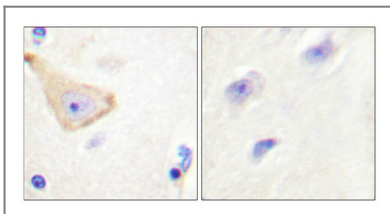
Organism	Gene ID	UniProt ID
Human	1439;	P32927;
Mouse	12983;	P26955;

Cellular Localization Membrane; Single-pass type I membrane protein.

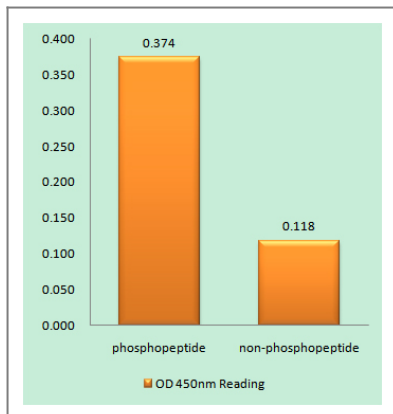
Tissue specificity Placenta,

Function Disease:Defects in CSF2RB are a cause of congenital pulmonary alveolar proteinosis (PAP) [MIM:265120]. PAP is an autosomal recessive fatal respiratory disease.,Domain:The box 1 motif is required for JAK interaction and/or activation.,Domain:The WSXWS motif appears to be necessary for proper protein folding and thereby efficient intracellular transport and cell-surface receptor binding.,Function:High affinity receptor for interleukin-3, interleukin-5 and granulocyte-macrophage colony-stimulating factor.,similarity:Belongs to the type I cytokine receptor family. Type 4 subfamily.,similarity:Contains 2 fibronectin type-III domains.,subunit:Heterodimer of an alpha and a beta subunit. The beta subunit is common to the IL3, IL5 and GM-CSF receptors.,

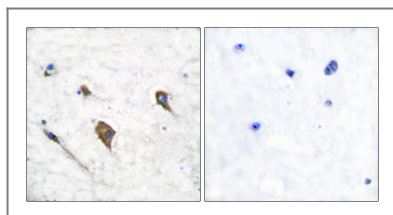
Validation Data



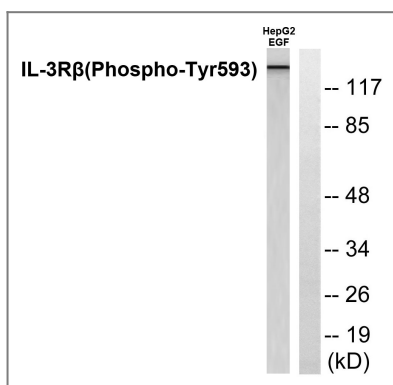
Immunohistochemical analysis of paraffin-embedded Human brain. Antibody was diluted at 1:100(4° overnight). High-pressure and temperature Tris-EDTA,pH8.0 was used for antigen retrieval. Negative contrl (right) obtained from antibody was pre-absorbed by immunogen peptide.



Enzyme-Linked Immunosorbent Assay (Phospho-ELISA) for Immunogen Phosphopeptide (Phospho-left) and Non-Phosphopeptide (Phospho-right), using IL-3R beta (Phospho-Tyr593) Antibody



Immunohistochemistry analysis of paraffin-embedded human brain, using IL-3R beta (Phospho-Tyr593) Antibody. The picture on the right is blocked with the phospho peptide.



Western blot analysis of lysates from RAW264.7 cells treated with G-CSF 25ng/ml 15', using IL-3R beta (Phospho-Tyr593) Antibody. The lane on the right is blocked with the phospho peptide.

Contact information

Orders: order@immunoway.com
 Support: tech@immunoway.com
 Telephone: 877-594-3616 (Toll Free), 408-747-0185
 Website: <http://www.immunoway.com>
 Address: 2200 Ringwood Ave San Jose, CA 95131 USA



Please scan the QR code to access additional product information:
IL-3R β (Phospho Tyr593) Rabbit pAb

For Research Use Only. Not for Use in Diagnostic Procedures.

[Antibody](#) | [ELISA Kits](#) | [Protein](#) | [Reagents](#)