

GRF-1 (Phospho Tyr1105) Rabbit pAb

CatalogNo: YP0635 **Orthogonal Validated** 

Key Features

Host Species

- Rabbit

Reactivity

- Human, Mouse, Rat

Applications

- WB, IHC, IF, ELISA

MW

- 160kD (Observed)

Isotype

- IgG

Storage

Storage* -15°C to -25°C/1 year (Do not lower than -25°C)**Formulation** Liquid in PBS containing 50% glycerol, 0.5% BSA and 0.02% sodium azide.

Recommended Dilution Ratios

WB 1:500-1:2000**IHC 1:100-1:300****ELISA 1:10000****IF 1:50-200**

Basic Information

Clonality Polyclonal

Immunogen Information

Immunogen The antiserum was produced against synthesized peptide derived from human GRF-1 around the phosphorylation site of Tyr1105. AA range:1071-1120

Specificity Phospho-GRF-1 (Y1105) Polyclonal Antibody detects endogenous levels of GRF-1 protein only when phosphorylated at Y1105. The name of modified sites may be influenced by many factors, such as species (the modified site was not originally found in human samples) and the change of protein sequence (the previous protein sequence is incomplete, and the protein sequence may be prolonged with the development of protein sequencing technology). When naming, we will use the "numbers" in historical reference to keep the sites consistent with the reports. The antibody binds to the following modification sequence (lowercase letters are modification sites):NlySV

| Target Information

Gene name ARHGAP35

Protein Name Rho GTPase-activating protein 35

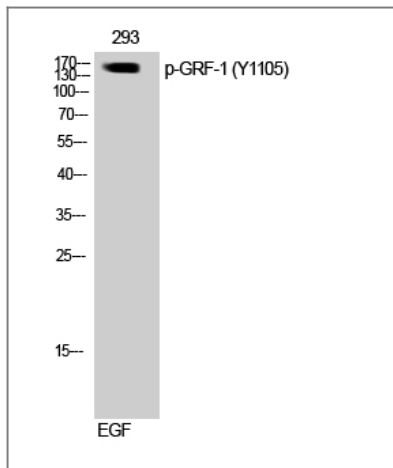
Organism	Gene ID	UniProt ID
Human	2909 ;	Q9NRY4 ;
Mouse	232906 ;	Q91YM2 ;
Rat		P81128 ;

Cellular Localization Cytoplasm, cytoskeleton, cilium basal body . Cytoplasm . Nucleus . Cell membrane . In response to integrins and SDC4 and upon phosphorylation by PKC, relocalizes from the cytoplasm to regions of plasma membrane ruffling where it colocalizes with polymerized actin. .

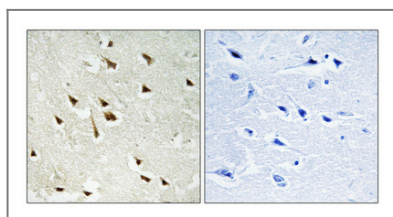
Tissue specificity Detected in neutrophils (at protein level).

Function Function:Represses transcription of the glucocorticoid receptor by binding to the cis-acting regulatory sequence 5'-GAGAAAAGAACTGGAGAACTC-3'. May participate in the regulation of retinal development and degeneration. May transduce signals from p21-ras to the nucleus, acting via the ras GTPase-activating protein (GAP). May also act as a tumor suppressor.,PTM:Phosphorylated upon DNA damage, probably by ATM or ATR.,PTM:Tyrosine phosphorylated.,similarity:Contains 1 Rho-GAP domain.,similarity:Contains 4 FF domains.,subunit:Interacts with p120GAP.,

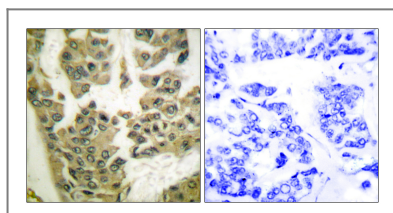
| Validation Data



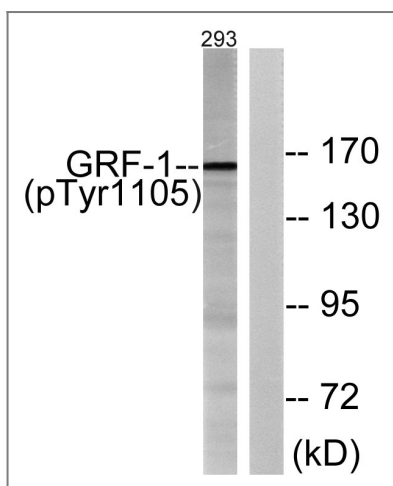
Western Blot analysis of 293 cells using Phospho-GRF-1 (Y1105) Polyclonal Antibody



Immunohistochemical analysis of paraffin-embedded Human brain. Antibody was diluted at 1:100(4° overnight). High-pressure and temperature Tris-EDTA,pH8.0 was used for antigen retrieval. Negative contrl (right) obtained from antibody was pre-absorbed by immunogen peptide.



Immunohistochemistry analysis of paraffin-embedded human breast carcinoma, using GRF-1 (Phospho-Tyr1105) Antibody. The picture on the right is blocked with the phospho peptide.



Western blot analysis of lysates from 293 cells treated with EGF 200ng/ml 30', using GRF-1 (Phospho-Tyr1105) Antibody. The lane on the right is blocked with the phospho peptide.

Contact information

Orders: order@immunoway.com
 Support: tech@immunoway.com
 Telephone: 877-594-3616 (Toll Free), 408-747-0185
 Website: <http://www.immunoway.com>
 Address: 2200 Ringwood Ave San Jose, CA 95131 USA



Please scan the QR code to access additional product information:
GRF-1 (Phospho-Tyr1105) Rabbit pAb

