

Fyn (Phospho Tyr530) Rabbit pAb

CatalogNo: YP0632 Orthogonal Validated 

Key Features

Host Species

- Rabbit

Reactivity

- Human, Mouse, Rat

Applications

- WB, IHC, IF, ELISA

MW

- 60kD (Observed)

Isotype

- IgG

Storage

Storage* -15°C to -25°C/1 year (Do not lower than -25°C)

Formulation Liquid in PBS containing 50% glycerol, 0.5% BSA and 0.02% sodium azide.

Recommended Dilution Ratios

WB 1:500-1:2000

IHC 1:100-1:300

ELISA 1:5000

IF 1:50-200

Basic Information

Clonality Polyclonal

Immunogen Information

Immunogen The antiserum was produced against synthesized peptide derived from human Fyn around the phosphorylation site of Tyr530. AA range:488-537

Specificity

Phospho-Fyn (Y530) Polyclonal Antibody detects endogenous levels of Fyn protein only when phosphorylated at Y530. The name of modified sites may be influenced by many factors, such as species (the modified site was not originally found in human samples) and the change of protein sequence (the previous protein sequence is incomplete, and the protein sequence may be prolonged with the development of protein sequencing technology). When naming, we will use the "numbers" in historical reference to keep the sites consistent with the reports. The antibody binds to the following modification sequence (lowercase letters are modification sites):PQyQP

Target Information

Gene name FYN

Protein Name Tyrosine-protein kinase Fyn

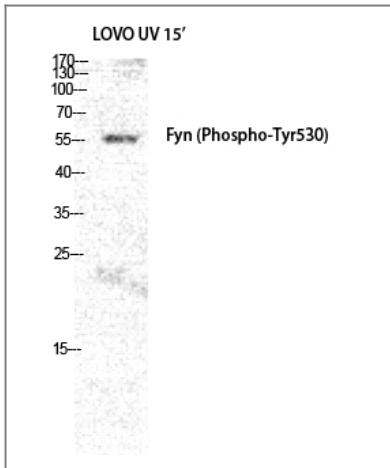
Organism	Gene ID	UniProt ID
Human	2534 ;	P06241 ;
Mouse	14360 ;	P39688 ;
Rat	25150 ;	Q62844 ;

Cellular Localization Cytoplasm. Nucleus. Cell membrane. Present and active in lipid rafts. Palmitoylation is crucial for proper trafficking.

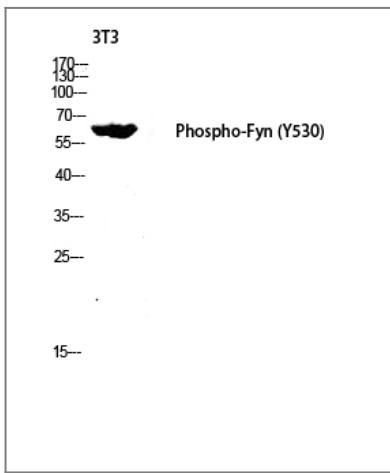
Tissue specificity Isoform 1 is highly expressed in the brain. Isoform 2 is expressed in cells of hemopoietic lineages, especially T-lymphocytes.

Function Catalytic activity:ATP + a [protein]-L-tyrosine = ADP + a [protein]-L-tyrosine phosphate.,cofactor:Manganese.,enzyme regulation:Inhibited by phosphorylation of Tyr-531 by leukocyte common antigen and activated by dephosphorylation of this site.,Function:Implicated in the control of cell growth. Plays a role in the regulation of intracellular calcium levels, with isoform 2 showing the greater ability to mobilize cytoplasmic calcium in comparison to isoform 1. Required in brain development and mature brain function with important roles in the regulation of axon growth, axon guidance, and neurite extension. Blocks axon outgrowth and attraction induced by NTN1 by phosphorylating its receptor DDC.,similarity:Belongs to the protein kinase superfamily. Tyr protein kinase family.,similarity:Belongs to the protein kinase superfamily. Tyr protein kinase family. SRC subfamily.,similarity:Contains 1 protein kinase domain.,similarity:Contains 1 SH2 domain.,similarity:Contains 1 SH3 domain.,subcellular location:Present and active in lipid rafts. Present in cell body and along the process of mature and developing oligodendrocytes.,subunit:Associates through its SH3 domain, to the p85 subunit of phosphatidylinositol 3-kinase. Interacts with the FYN-binding protein (FYB). Interacts with phosphorylated TOM1L1. Interacts with CD79A upon activation of the B-cell antigen receptor which increases FYN activity (By similarity). Interacts with PAG1. Interacts (via SH3 domain) with PRMT8. Interacts with SH2D1A and SLAMF1. Interacts (via SH3 domain) with HEV ORF3 protein.,tissue specificity:Isoform 1 is highly expressed in the brain, isoform 2 is expressed in cells of hemopoietic lineages, especially T lymphocytes.,

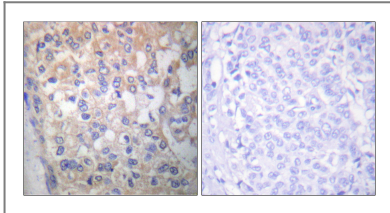
Validation Data



Western Blot analysis of LOVO+UV cells using Phospho-Fyn (Y530) Polyclonal Antibody diluted at 1:2000



Western blot analysis of 3T3 lysis using Phospho-Fyn (Y530) antibody. Antibody was diluted at 1:2000



Immunohistochemistry analysis of paraffin-embedded human breast carcinoma, using Fyn (Phospho-Tyr530) Antibody. The picture on the right is blocked with the phospho peptide.

Contact information

Orders: order@immunoway.com
Support: tech@immunoway.com
Telephone: 877-594-3616 (Toll Free), 408-747-0185
Website: <http://www.immunoway.com>
Address: 2200 Ringwood Ave San Jose, CA 95131 USA



Please scan the QR code to access additional product information:
Fyn (Phospho Tyr530) Rabbit pAb