

Dynamin I (Phospho Ser774) Rabbit pAb

CatalogNo: YP0627

Key Features

Host Species

- Rabbit

Reactivity

- Human, Mouse, Rat

Applications

- WB, IHC, IF, ELISA

MW

- 97kD (Observed)

Isotype

- IgG

Storage

Storage* -15°C to -25°C/1 year (Do not lower than -25°C)

Formulation Liquid in PBS containing 50% glycerol, 0.5% BSA and 0.02% sodium azide.

Recommended Dilution Ratios

WB 1:500-1:2000

IHC 1:100-1:300

ELISA 1:5000

IF 1:50-200

Basic Information

Clonality Polyclonal

Immunogen Information

Immunogen The antiserum was produced against synthesized peptide derived from human Dynamin-1 around the phosphorylation site of Ser774. AA range: 740-789

Specificity Phospho-Dynamin I (S774) Polyclonal Antibody detects endogenous levels of Dynamin I protein only when phosphorylated at S774. The name of modified sites may be influenced by many factors, such as species (the modified site was not originally found in human samples) and the change of protein sequence (the previous protein sequence is incomplete, and the protein sequence may be prolonged with the development of protein sequencing technology). When naming, we will use the "numbers" in historical reference to keep the sites consistent with the reports. The antibody binds to the following modification sequence (lowercase letters are modification sites): RRSP

Target Information

Gene name DNM1

Protein Name Dynamin-1

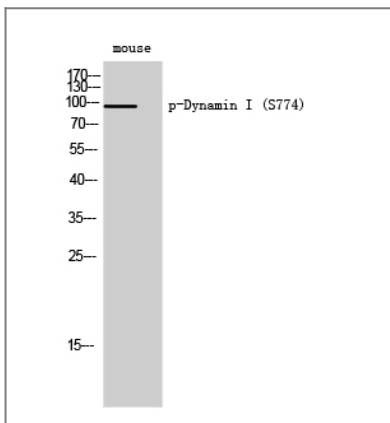
Organism	Gene ID	UniProt ID
Human	1759;	Q05193;
Mouse	13429;	P39053;
Rat	140694;	P21575;

Cellular Localization Cytoplasm . Cytoplasm, cytoskeleton . Microtubule-associated.

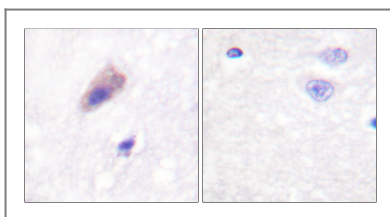
Tissue specificity Brain,Platelet,PNS,

Function Catalytic activity:GTP + H(2)O = GDP + phosphate.,Function:Microtubule-associated force-producing protein involved in producing microtubule bundles and able to bind and hydrolyze GTP. Most probably involved in vesicular trafficking processes, in particular endocytosis.,similarity:Belongs to the dynamin family.,similarity:Contains 1 GED domain.,similarity:Contains 1 PH domain.,subcellular location:Microtubule-associated.,subunit:Interacts with CAV1 and SH3GLB1. Binds SH3GL1, SH3GL2 and SH3GL3.,

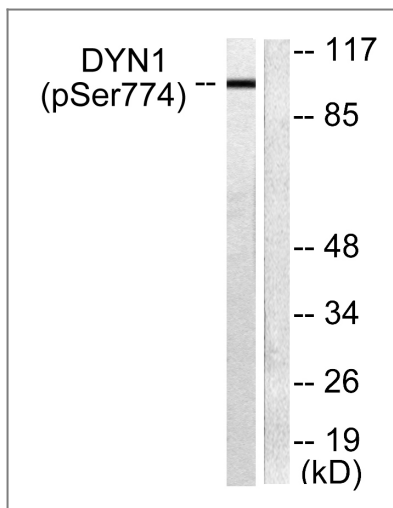
Validation Data



Western Blot analysis of mouse cells using Phospho-Dynamin I (S774) Polyclonal Antibody



Immunohistochemistry analysis of paraffin-embedded human brain, using Dynamin-1 (Phospho-Ser774) Antibody. The picture on the right is blocked with the phospho peptide.



Western blot analysis of lysates from mouse brain, using Dynamin-1 (Phospho-Ser774) Antibody. The lane on the right is blocked with the phospho peptide.

Contact information

Orders: order@immunoway.com
Support: tech@immunoway.com
Telephone: 877-594-3616 (Toll Free), 408-747-0185
Website: <http://www.immunoway.com>
Address: 2200 Ringwood Ave San Jose, CA 95131 USA



Please scan the QR code to access additional product information:
Dynamin I (Phospho Ser774) Rabbit pAb

For Research Use Only. Not for Use in Diagnostic Procedures.

[Antibody](#) | [ELISA Kits](#) | [Protein](#) | [Reagents](#)